



ETA-Danmark A/S  
Göteborg Plads 1  
DK-2150 Nordhavn  
Tel. +45 72 24 59 00  
Internet [www.etadanmark.dk](http://www.etadanmark.dk)

Authorised and notified  
according to Article 29 of the  
Regulation (EU)  
No 305/2011 of the European  
Parliament and of the Council  
of 9 March 2011

MEMBER OF EOTA



## European Technical Assessment ETA-21/0085 of 2021/01/03

### I General Part

**Technical Assessment Body issuing the ETA and designated according to Article 29 of the Regulation (EU) No 305/2011: ETA-Danmark A/S**

**Trade name of the construction product:**

ACR 240

**Product family to which the above construction product belongs:**

Fire Stopping and Sealing Product:  
• Penetration Seals

**Manufacturer:**

Würth International AG  
Aspermontstrasse 1  
CH- 7000 Chur  
Switzerland

**Manufacturing plant:**

A/003

**This European Technical Assessment contains:**

63 pages including 1 annex which form an integral part of the document

**This European Technical Assessment is issued in accordance with Regulation (EU) No 305/2011, on the basis of:**

EAD 350454-00-1104, September 2017

**This version replaces:**

-

**Translations of this European Technical Assessment in other languages shall fully correspond to the original issued document and should be identified as such.**

**Communication of this European Technical Assessment, including transmission by electronic means, shall be in full. However, partial reproduction may be made, with the written consent of the issuing Technical Assessment Body. Any partial reproduction has to be identified as such.**

**Table of Contents**

I.	SPECIFIC PARTS OF THE EUROPEAN TECHNICAL ASSESSMENT .....	4
1	Technical description of the product .....	4
2	Specification of the intended uses of the product in accordance with the applicable European Assessment Document (Hereinafter EAD): EAD 350454-00-1104.....	5
3	Performance of the product and references to the methods used for its assessment .....	6
4	ASSESSMENT AND VERIFICATION OF CONSTANCY OF PERFORMANCE (HEREINAFTER AVCP) SYSTEM APPLIED, WITH REFERENCE TO ITS LEGAL BASE.....	7
5	Technical details necessary for the implementation of the AVCP system, as provided for in the applicable EAD .....	7
ANNEX A – Resistance to Fire Classification – ACR 240 .....		8
A.1	Rigid wall constructions according to 1.2.1 with wall thickness of minimum 150 mm .....	8
A.1.1	Single side penetration seal with cables .....	8
A.1.2	Double side penetration seal with cables .....	9
A.1.3	Single side penetration seal with metallic (and composite) pipes .....	10
A.1.4	Single side penetration seal with metallic (and composite) pipes .....	12
A.1.5	Single side penetration seal with metallic pipes .....	14
A.1.6	Double side penetration seal with metallic pipes .....	16
A.1.7	Double side penetration seal with metallic pipes .....	18
A.1.8	Double side penetration seal with metallic pipes with combustible insulation .....	20
A.1.9	Double side penetration seal with plastic pipes.....	22
A.2	Flexible wall constructions according to 2. 2) with wall thickness of minimum 75 mm.....	24
A.2.1	Double side penetration seal with cables .....	24
A.3	Flexible wall constructions according to 2. 2) with wall thickness of minimum 100 mm.....	28
A.3.1	Double side penetration seal with cables .....	28
A.3.2	Double side penetration seal with metallic pipes .....	29
A.3.3	Double side penetration seal with metallic pipes .....	32
A.3.4	Double side penetration seal with composite pipes .....	36
A.3.5	Double side penetration seal with metallic (and composite) pipes .....	37
A.3.6	Double side penetration seal with plastic pipes.....	39
A.3.7	Double side penetration seal with plastic pipes.....	40
A.4	Rigid floor constructions according to 1.2.1 with floor thickness of minimum 150 mm .....	42
A.4.1	Single side penetration seal with cables .....	42
A.4.2	Single side penetration seal with cables .....	43
A.4.3	Single side penetration seal with pipes.....	44
A.4.4	Double side penetration seal with pipes.....	46
A.4.5	Double side penetration seal with cables .....	48
A.4.6	Single side penetration seal with metallic pipes .....	49
A.4.7	Single side penetration seal with metallic pipes .....	53
A.4.8	Single side penetration seal with composite pipes .....	55
A.4.9	Double side penetration seal with metallic pipes .....	56
A.4.10	Double side penetration seal with metallic pipes .....	57
A.4.11	Double side penetration seal with metallic pipes.....	60
A.4.12	Double side penetration seal with plastic pipes .....	62

**I. SPECIFIC PARTS OF THE EUROPEAN TECHNICAL ASSESSMENT**

**1 Technical description of the product**

- 1) ACR 240 is an acrylic sealant used to form a penetration seal around metallic pipes, plastic pipes, composite pipes and electrical cables to reinstate the fire resistance performance of wall and floor constructions, where they have been provided with apertures for the penetration of services.
- 2) The ACR 240 is supplied in liquid form contained within 310 & 380 ml cartridges and 600 ml foil packs. The sealant is gunned into the aperture in the separating element/elements and around the service or services, to a specified depth utilising mineral fibre insulation backing material.
- 3) ACR 240 contains no carcinogenic substances or mutagenic substances, flame retardants or antimicrobiological agents.
- 4) The applicant has submitted a written declaration that ACR 240 does not contain substances which have to be classified as dangerous according to Directive 67/548/EEC and Regulation (EC) No 1272/2008 and listed in the "Indicative list on dangerous substances" of the EGDS - taking into account the installation conditions of the construction product and the release scenarios resulting from there. An emission report has also been provided.

In addition to the specific clauses relating to dangerous substances contained in this European technical Assessment, there may be other requirements applicable to the products falling within its scope (e.g. transposed European legislation and national laws, regulations and administrative provisions). In order to meet the provisions of the Construction Products Regulation, these requirements need also to be complied with, when and where they apply.

- 5) The use category of ACR 240 in relation to BWR 3 (Hygiene, health and environment) is IA1, S/W3

**2 Specification of the intended uses of the product in accordance with the applicable European Assessment Document (Hereinafter EAD): EAD 350454-00-1104**

Detailed information and data is given in Annex A.

- 1) The intended use of system ACR 240 is to reinstate the fire resistance performance of flexible wall constructions, rigid wall constructions and rigid floor constructions where they are penetrated by various metal pipe services with and without combustible insulation, plastic pipes, composite pipes and electrical cables.
- 2) The specific elements of construction that the system ACR 240 may be used to provide a penetration seal in, are as follows:
  - a. Flexible walls: The wall must have a minimum thickness of 75 mm and comprise steel studs or timber studs\* lined on both faces with minimum 1 layers of 12.5 mm thick boards.
  - b. Rigid walls: The wall must have a minimum thickness of 75 mm and comprise concrete, aerated concrete or masonry, with a minimum density of 650 kg/m<sup>3</sup>.
  - c. Rigid floors: The floor must have a minimum thickness of 150 mm and comprise aerated concrete or concrete with a minimum density of 650 kg/m<sup>3</sup>.

\* no part of the penetration seal may be closer than 100 mm to a stud, the cavity must be closed between the penetration seal and the stud, and minimum 100 mm of insulation of class A1 or A2 according to EN 13501-1 must be provided within the cavity between the penetration seal and the stud.

The supporting construction must be classified in accordance with EN 13501-2 for the required fire resistance period.

- 3) The system ACR 240 may be used to provide a penetration seal with specific single insulated metal pipes, uninsulated metal pipes, plastic pipes, composite pipes and with specific electrical cables, single or in a bundle (for details see Annex A).
- 4) Apertures in the separating element shall be maximum 300 x 300 mm or 100 x 1000 mm. The annular space/gap around the services shall be infilled with mineral fibre insulation backing material and ACR 240 sealant. Blank seals up to 300 x 300 mm are permitted. For full details, see Annex A.
- 5) Pipes shall be supported at maximum 350 mm away from both faces of the wall constructions and from the upper face of floor constructions.
- 6) The provisions made in this European Technical Assessment are based on an assumed working life of the ACR 240 of 30 years, provided that the conditions laid down in the product data sheet regarding packaging/transport/ storage/installation/use/repair are met. The indications given on the working life cannot be interpreted as a guarantee given by the producer or the Technical Assessment Body but are to be regarded only as a means for choosing the right products in relation to the expected economically reasonable working life of the works.
- 7) Type Z<sub>2</sub>: Intended for uses in internal conditions with humidity lower than 85 % RH excluding temperatures below 0°C, without exposure to rain or UV.

**3 Performance of the product and references to the methods used for its assessment**

Product-type: Sealant		Intended use: Penetration Seal
	Essential characteristic	Product performance
<b>BWR 2 Safety in case of fire</b>		
	Reaction to fire	Class D-s1, d1
	Resistance to fire	Annex A
<b>BWR 3 Hygiene, health and environment</b>		
	Air permeability	No performance assessed
	Water permeability	No performance assessed
	Content, emission and/or release of dangerous substances	Use categories: IA1, S/W3 Declaration of manufacturer
<b>BWR 4 Safety in use</b>		
	Mechanical resistance and stability	No performance assessed
	Resistance to impact/movement	No performance assessed
	Adhesion	No performance assessed
	Durability	Z <sub>2</sub>
<b>BWR 5 Protection against noise</b>		
	Airborne sound insulation	No performance assessed
<b>BWR 6 Energy economy and heat retention</b>		
	Thermal properties	No performance assessed
	Water vapour permeability	No performance assessed

**4 ASSESSMENT AND VERIFICATION OF CONSTANCY OF PERFORMANCE (HEREINAFTER AVCP) SYSTEM APPLIED, WITH REFERENCE TO ITS LEGAL BASE**

According to the decision 1999/454/EC – Commission Decision of date 22nd June 1999 on the procedure for attesting the conformity of construction products pursuant to Article 20(2) of Council Directive 89/106/EEC as regards fire stopping, fire sealing and fire protective products, published in the Official Journal of the European Union (OJEU) L178/52 of 14/07/1999, see <http://eur-lex.europa.eu/JOIndex.do> of the European Commission<sup>1</sup>, as amended, the system(s) of assessment and verification of constancy of performance (see Annex V to Regulation (EU) No 305/2011) given in the following table(s) applies (apply).

Product(s)	Intended use(s)	Level(s) or class(es)	System(s)
Fire stopping and Fire Sealing Products	For fire compartmentation and/or fire protection or fire performance	Any	1

**5 Technical details necessary for the implementation of the AVCP system, as provided for in the applicable EAD**

Technical details necessary for the implementation of the AVCP system are laid down in the control plan deposited at ETA-Danmark A/S prior to CE marking

Issued in Copenhagen on 2021-01-03 by



Thomas Bruun

Managing Director, ETA-Danmark

<sup>1</sup> Official Journal of the European Communities L178/52 of 14/7/1999

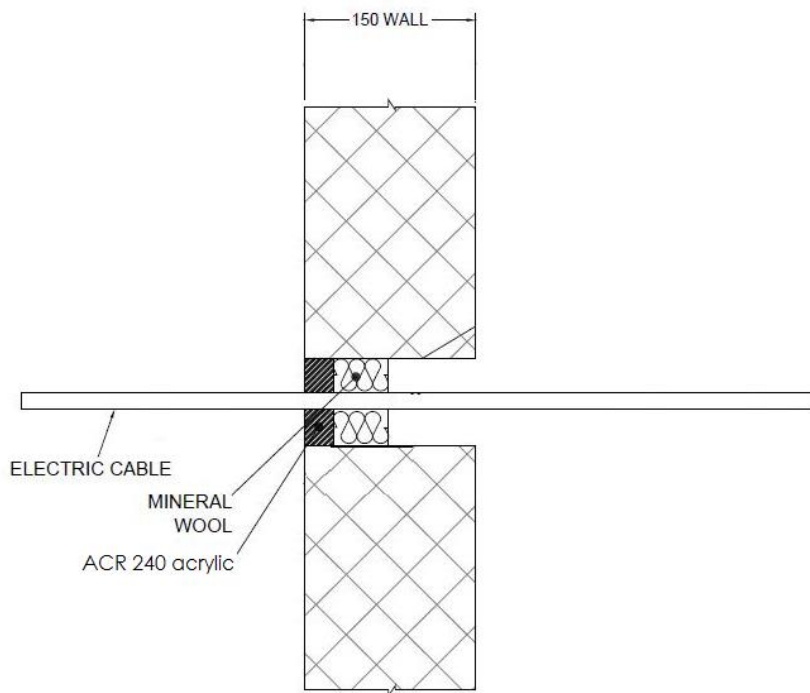
## ANNEX A – Resistance to Fire Classification – ACR 240

### A.1 Rigid wall constructions according to 1.2.1 with wall thickness of minimum 150 mm

#### A.1.1 Single side penetration seal with cables

**Penetration Seal:** Cables (single) fitted at any position within the aperture, with ACR 240 to either side of the wall (or at any position in between), backed with stone wool insulation 35kg/m<sup>3</sup> or 'Würth FP Backing'. Minimum separation between cables and the edge of the seal of 7 mm.

Construction details:



#### A.1.1.1

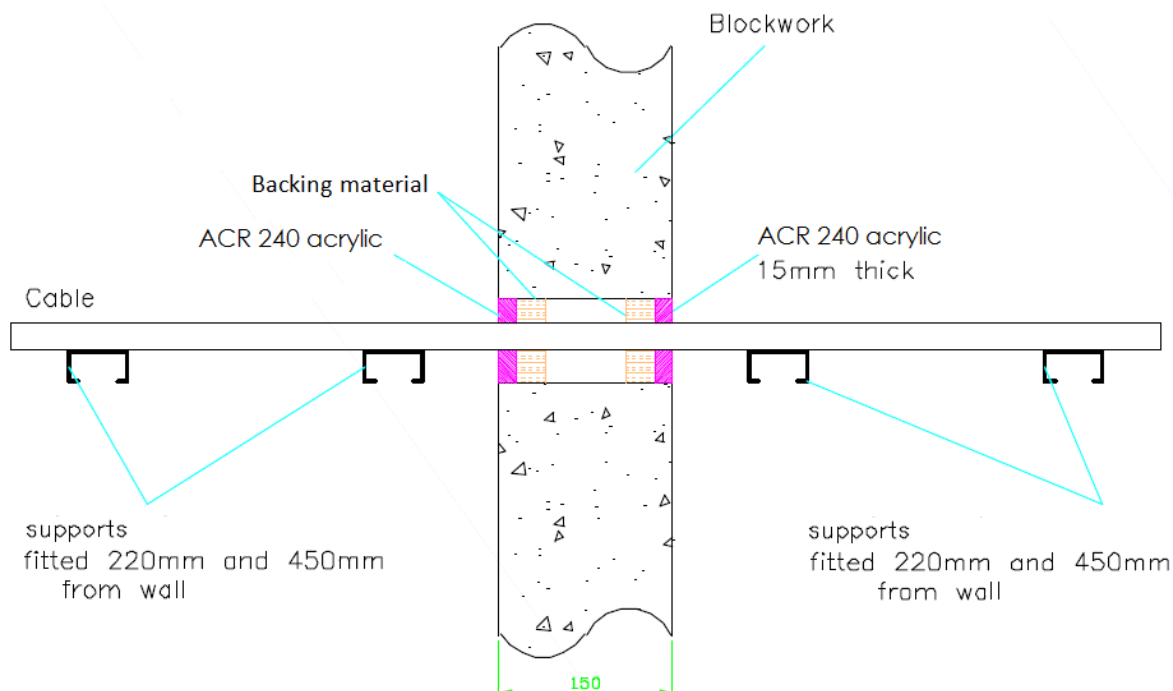
Services	Sealant depth	Backing	Maximum seal size	Classification
Single electrical cables up to 21 mm Ø	25 mm	48 mm deep Würth FP Backing	87 mm Ø	E 240, EI 90
Blank seals	25 mm	48 mm Würth FP Backing insulation	300 x 300 mm	E 240, EI 60
Electric cables up to 21 mm diameter, single.			35 x 35 mm / 36 mm Ø	E 240, EI 120
Blank seals				
Electric cables up to 21 mm diameter, single.				



### A.1.2 Double side penetration seal with cables

**Penetration Seal:** Cables fitted with ACR 240 to both sides of the wall, backed with stone wool insulation 35kg/m<sup>3</sup>. Maximum seal size of 300 x 300 mm and minimum separation between cables and the edge of the seal of 10 mm.

Construction details:



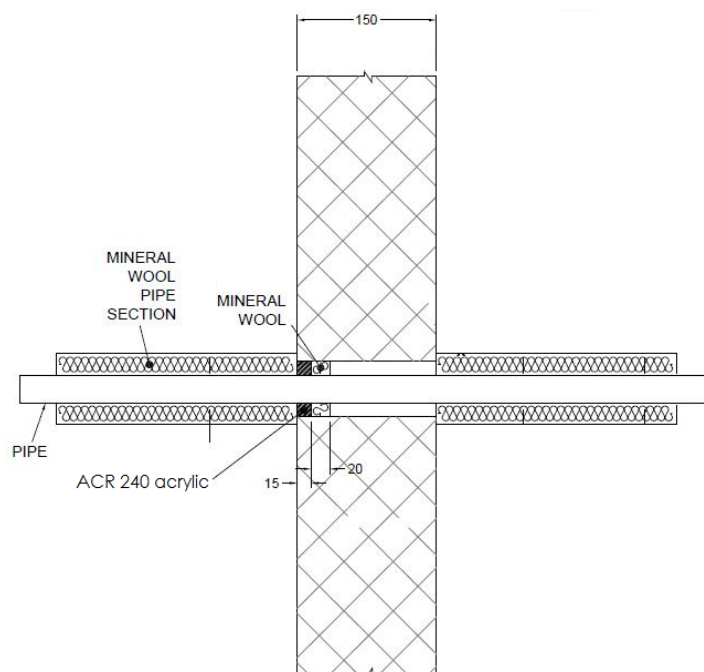
#### A.1.2.1

Services	Sealant depth	Backing	Insulation	Classification
Blank seals	15 mm	25 mm Stone wool 35 kg/m³	None	EI 240
Electric cables up to 21 mm diameter, single or in a bundle.				E 240 EI 120
Electric cables 22-80 mm diameter, single or in a bundle.				E 120 EI 60
Blank seals	25 mm	48 mm Würth FP Backing		EI 240
Electric cables up to 80 mm diameter, single or in a bundle.				E 240 EI 60
Cables up to 21 mm diameter, single or in a bundle up to 100 mm diameter				EI 240

**A.1.3 Single side penetration seal with metallic (and composite) pipes**

**Penetration Seal:** LI (Local Interrupted) of minimum length stated below or CI (Continuous Interrupted) insulated metallic and composite pipes (single) fitted at any position within the aperture, with 15 mm deep ACR 240 to either side of the wall (or at any position between), backed with 20 mm deep 40 kg/m<sup>3</sup> stone wool insulation\*.

Construction details:

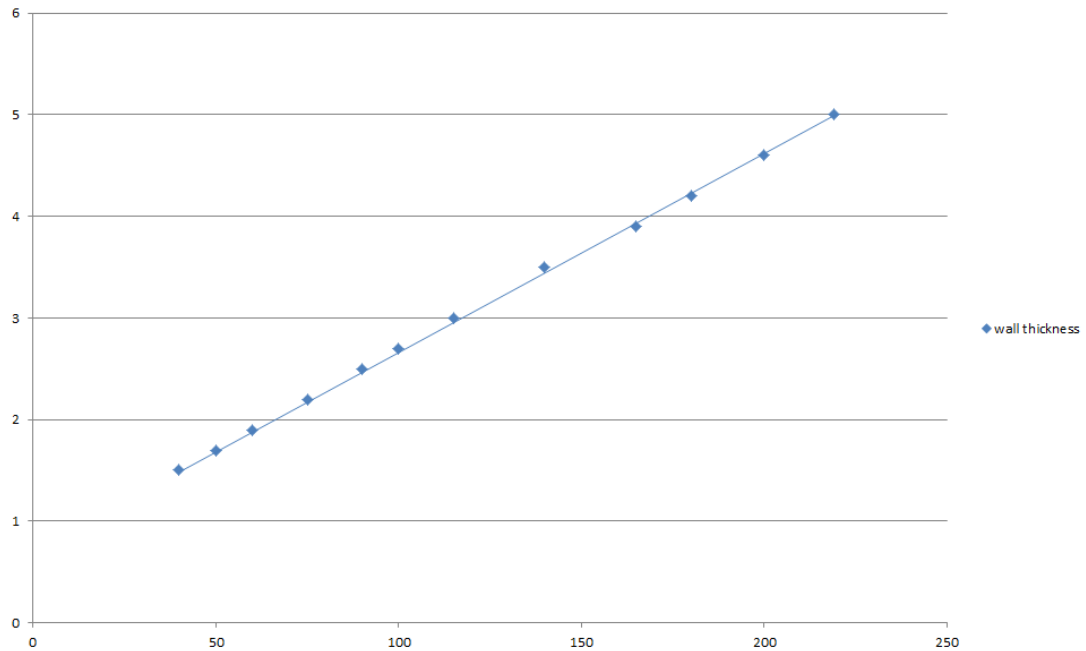
**A.1.3.1**

Services	Seal width around pipe	Insulation (minimum)	Classification
Copper pipe up to 54 mm diameter/0.9-14.2 mm wall	8-9 mm	1000 mm length 20 mm Stone wool insulation 80 kg/m <sup>3</sup>	<b>E 240 C/U, EI 180 C/U</b>
Copper pipe up to 12 mm diameter/0.9-5 mm wall	8 mm		<b>EI 240 C/U</b>
Alupex composite pipe 75 mm diameter/7.5 mm wall	30 mm	25 mm Würth FP Backing insulation, 600 mm long (min.)	<b>EI 120 C/U</b>

Services	Seal width around pipe	Insulation (minimum)	Classification
Mild or stainless steel pipe			
40 mm diameter/1.5-14.2 mm wall*	6-18 mm	1000 mm length of 20 mm Stone wool insulation 80 kg/m <sup>3</sup>	EI 240 C/U
40 mm diameter/1.5-14.2 mm wall*		1000 mm length of 30 mm Stone wool insulation 80 kg/m <sup>3</sup>	E 180, EI 90 C/U
50 mm diameter/1.7-14.2 mm wall*			
60 mm diameter/1.9-14.2 mm wall*			
75 mm diameter/2.2-14.2 mm wall*			
90 mm diameter/2.5-14.2 mm wall*			
100 mm diameter/2.7-14.2 mm wall*			
115 mm diameter/3-14.2 mm wall*			
140 mm diameter/3.5-14.2 mm wall*			
165 mm diameter/ 3.9-14.2 mm wall*			
180 mm diameter/ 4.2-14.2 mm wall*			
200 mm diameter/ 4.6-14.2 mm wall*			
219 mm diameter/ 5.0-14.2 mm wall*			

\* Typical pipe diameters shown, see below graph for intermediate sizes

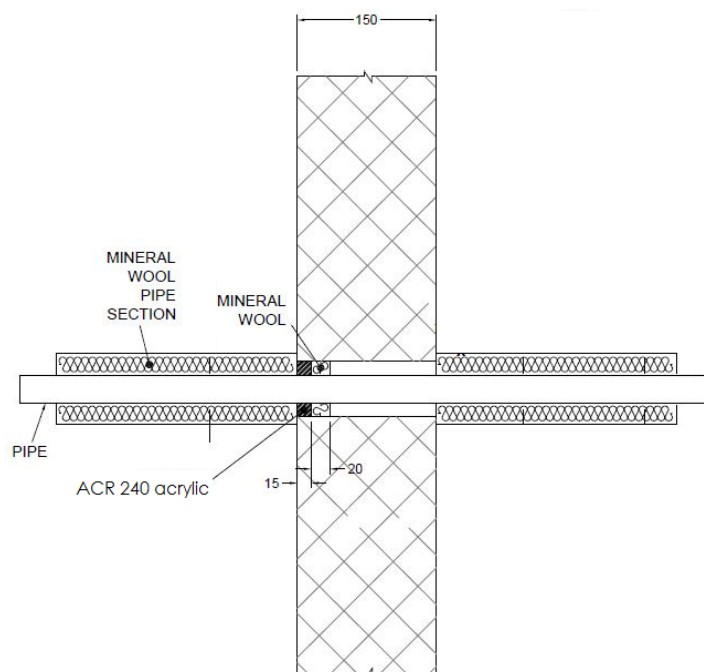
Pipe diameter vs Wall thickness



**A.1.4 Single side penetration seal with metallic (and composite) pipes**

**Penetration Seal:** LI (Local Interrupted) of minimum length stated below or CI (Continuous Interrupted) insulated metallic and composite pipes (single) fitted at any position within the aperture, with 25 mm deep ACR 240 to either side of the wall (or at any position between), backed with 25 mm deep 40 kg/m<sup>3</sup> stone wool insulation\*.

Construction details:

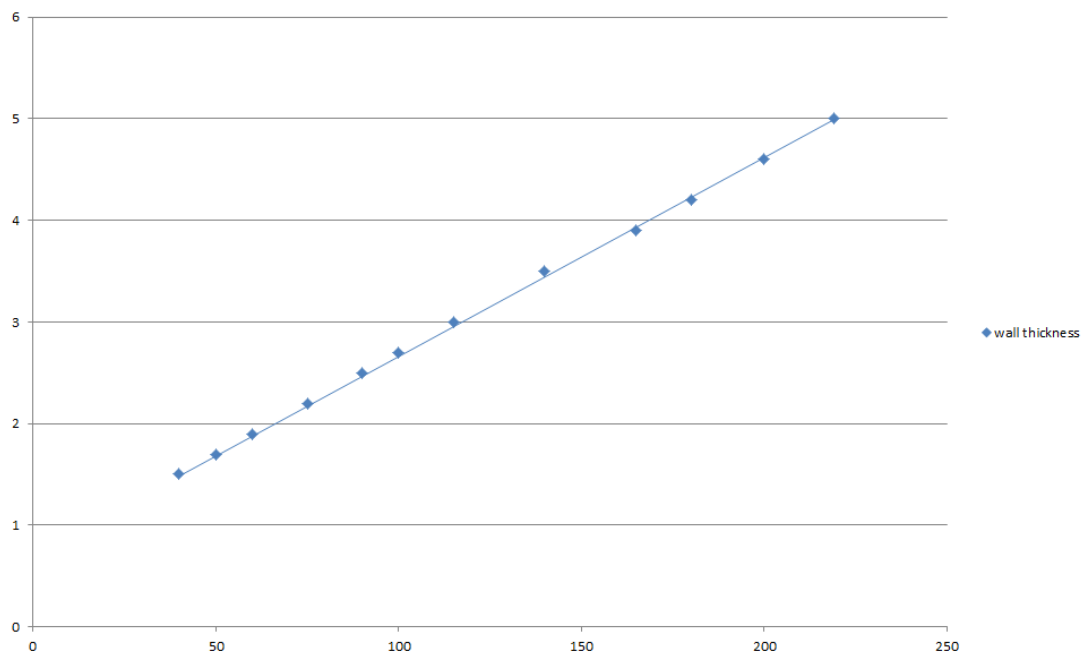
**A.1.4.1**

Services	Maximum Seal size	Insulation (minimum)	Classification
Copper pipe up to 54 mm diameter/0.9-14.2 mm wall	300 x 300 mm	1000 mm length 20 mm Stone wool insulation 80 kg/m <sup>3</sup>	<b>E 240 C/U, EI 60 C/U</b>
Copper pipe up to 12 mm diameter/0.9-5 mm wall		25 mm Würth FP Backing insulation, 600 mm long (min.)	
Alupex composite pipe 75 mm diameter/7.5 mm wall			

Services	Maximum seal size	Insulation (minimum)	Classification
Mild or stainless steel pipe			
40 mm diameter/1.5-14.2 mm wall*	300 x 300 mm	1000 mm length of 20 mm Stone wool insulation 80 kg/m <sup>3</sup>	E 240 C/U, EI 60 C/U
40 mm diameter/1.5-14.2 mm wall*		1000 mm length of 30 mm Stone wool insulation 80 kg/m <sup>3</sup>	
50 mm diameter/1.7-14.2 mm wall*			
60 mm diameter/1.9-14.2 mm wall*			
75 mm diameter/2.2-14.2 mm wall*			
90 mm diameter/2.5-14.2 mm wall*			
100 mm diameter/2.7-14.2 mm wall*			
115 mm diameter/3-14.2 mm wall*			
140 mm diameter/3.5-14.2 mm wall*			
165 mm diameter/ 3.9-14.2 mm wall*			
180 mm diameter/ 4.2-14.2 mm wall*			
200 mm diameter/ 4.6-14.2 mm wall*			
219 mm diameter/ 5.0-14.2 mm wall*			

\* Typical pipe diameters shown, see below graph for intermediate sizes

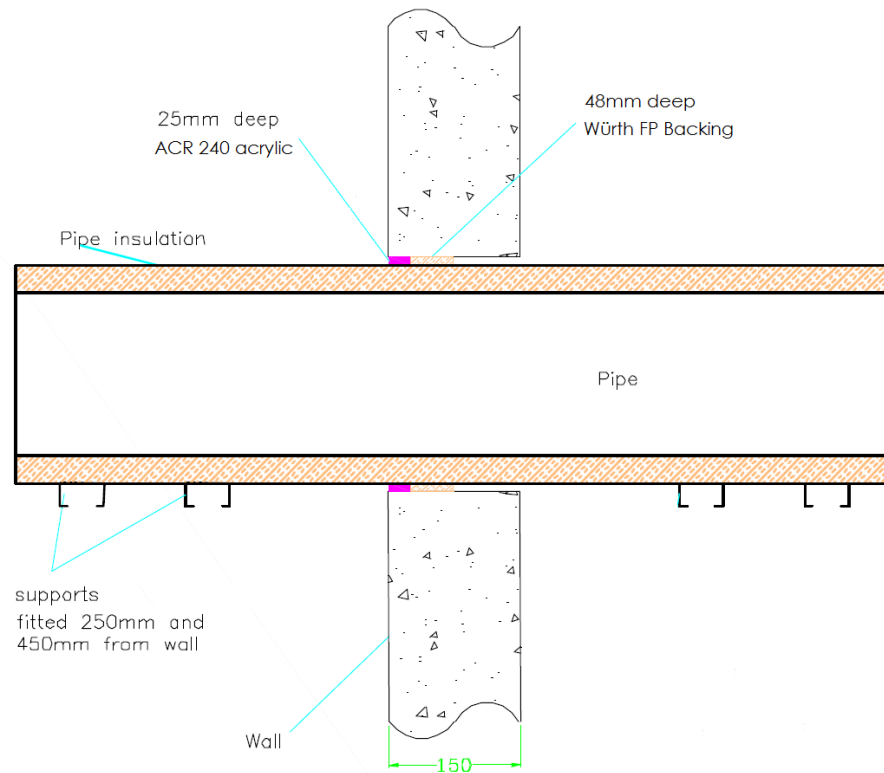
**Pipe diameter vs Wall thickness**



### A.1.5 Single side penetration seal with metallic pipes

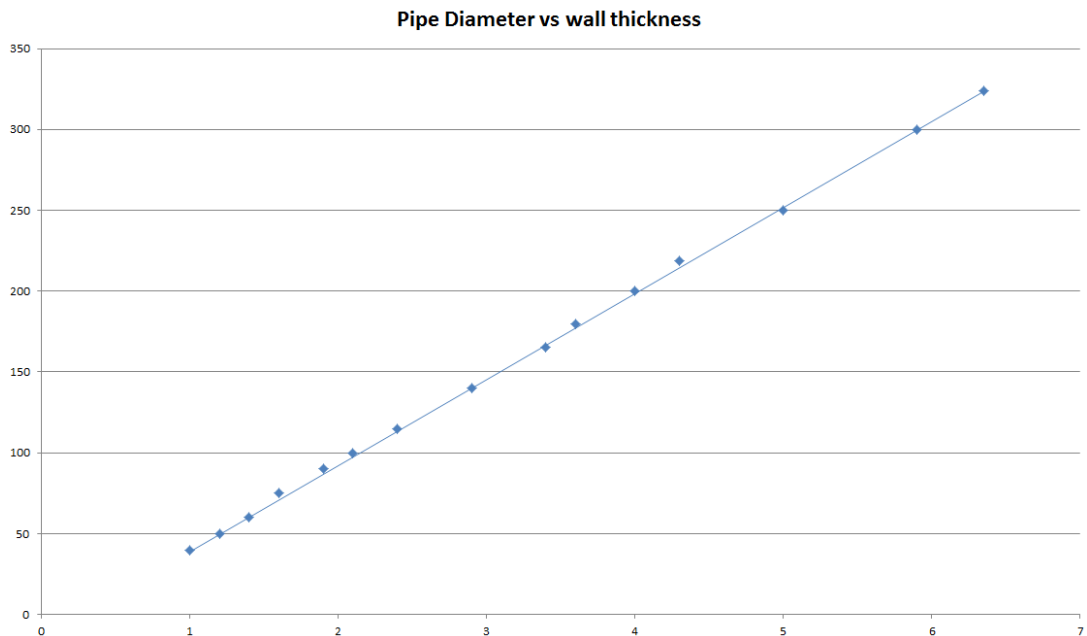
**Penetration Seal:** CS (Continuous Sustained) insulated metallic (single), with 25 mm deep ACR 240 to either side of the wall (or at any position between), backed with 48 mm deep Würth FP Backing insulation. Minimum annular space 10 mm and minimum separation between penetrations seals of 30 mm. Maximum seal size 300 x 300 mm or 504 mm  $\varnothing$ .

Construction details:



**A.1.5.1 Single side penetration seal with pipes**

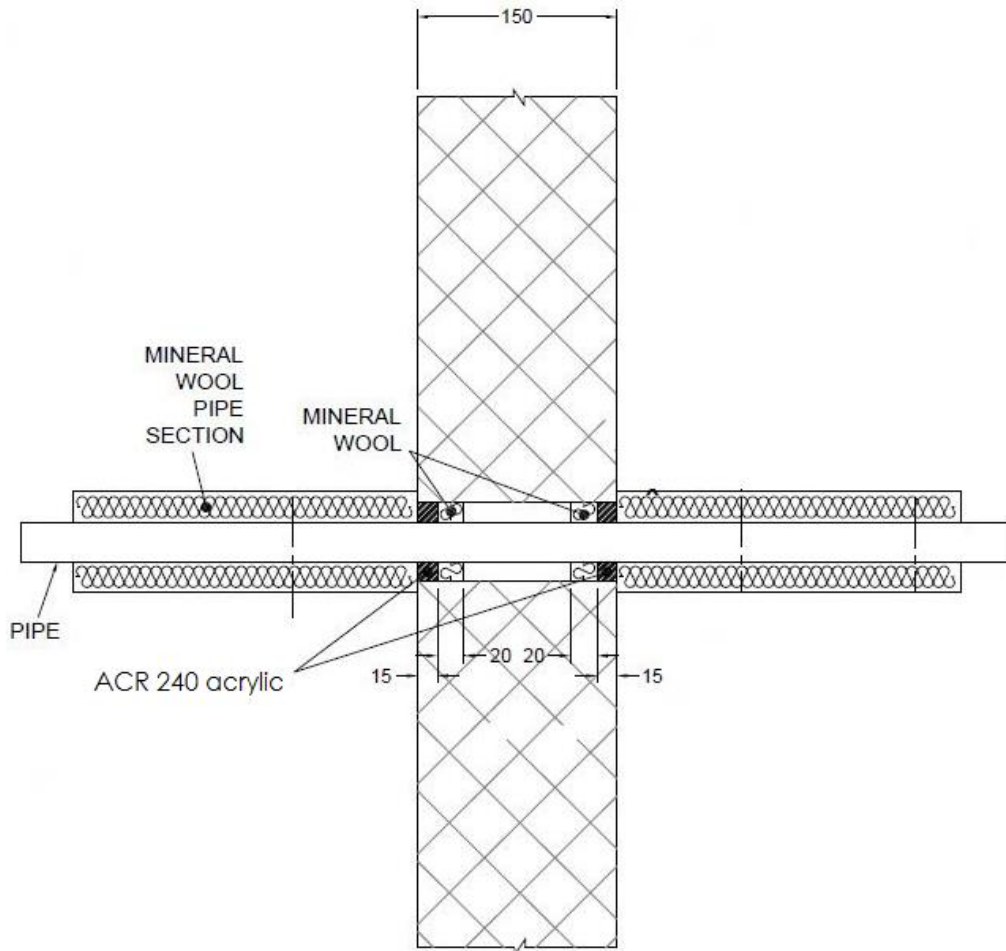
Mild or stainless steel pipe	Insulation	Classification
40 mm diameter/1-14.2 mm wall	20 mm thick stone, mineral wool 80 kg/m <sup>3</sup>	EI 240 C/U
40 mm diameter/1-14.2 mm wall*	30-80 mm thick stone, mineral wool min. 80 kg/m <sup>3</sup>	EI 180 C/U
50 mm diameter/1.2-14.2 mm wall*		
60 mm diameter/1.4-14.2 mm wall*		
75 mm diameter/1.6-14.2 mm wall*		
90 mm diameter/1.9-14.2 mm wall*		
100 mm diameter/2.1-14.2 mm wall*		
115 mm diameter/2.4-14.2 mm wall*		
140 mm diameter/2.9-14.2 mm wall*		
165 mm diameter/ 3.4-14.2 mm wall*		
180 mm diameter/ 3.6-14.2 mm wall*		
200 mm diameter/ 4.0-14.2 mm wall*		
219 mm diameter/ 4.3-14.2 mm wall*		
250 mm diameter/ 5.0-14.2 mm wall*		
300 mm diameter/ 5.9-14.2 mm wall*		
324 mm diameter/ 6.35-14.2 mm wall*		



### A.1.6 Double side penetration seal with metallic pipes

**Penetration Seal:** 1000 mm (min.) LI (Local Interrupted) or CI (Continuous Interrupted) insulated metallic pipes (single) fitted at any position within the aperture, with 15 mm deep ACR 240 to both sides of the), backed with 20 or 30 mm deep 40 kg/m<sup>3</sup> stone wool insulation.

Construction details:

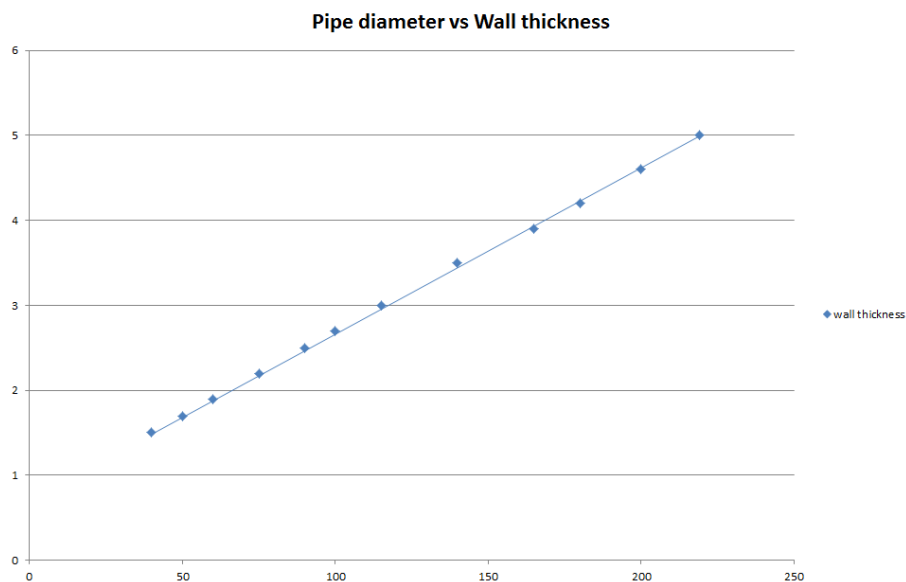




**A.1.6.1**

Services	Maximum seal size	Insulation (minimum)	Classification
Mild or stainless steel pipe			
40 mm diameter/1.5-14.2 mm wall*	300 x 300 mm	20 mm Stone wool insulation 80 kg/m <sup>3</sup>	EI 240 C/U
40 mm diameter/1.5-14.2 mm wall*		30 mm Stone wool insulation 80 kg/m <sup>3</sup>	E 240, EI 120 C/U
50 mm diameter/1.7-14.2 mm wall*			
60 mm diameter/1.9-14.2 mm wall*			
75 mm diameter/2.2-14.2 mm wall*			
90 mm diameter/2.5-14.2 mm wall*			
100 mm diameter/2.7-14.2 mm wall*			
115 mm diameter/3-14.2 mm wall*			
140 mm diameter/3.5-14.2 mm wall*			
165 mm diameter/ 3.9-14.2 mm wall*			
180 mm diameter/ 4.2-14.2 mm wall*			
200 mm diameter/ 4.6-14.2 mm wall*			
219 mm diameter/ 5.0-14.2 mm wall*			

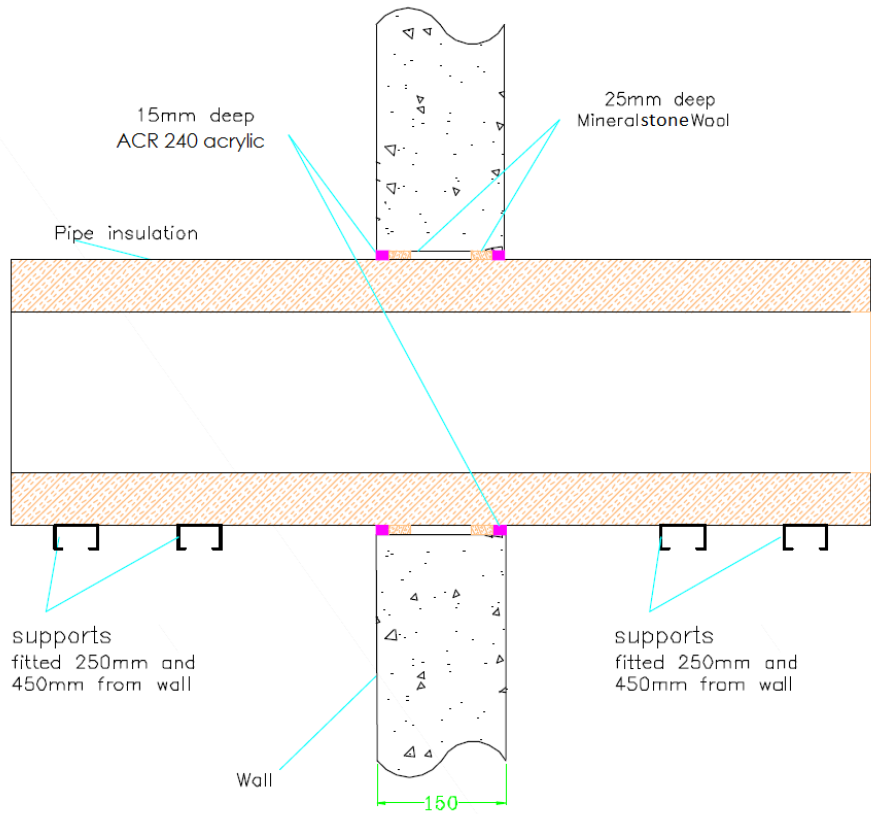
\* Typical pipe diameters shown, see below graph for intermediate sizes



**A.1.7 Double side penetration seal with metallic pipes**

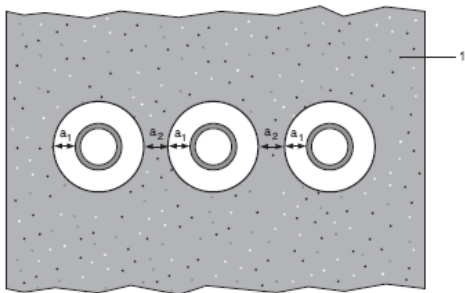
**Penetration Seal:** CS (Continuous Sustained) insulated metallic pipes (single) fitted at any position within the aperture, with 15 mm ACR 240 to both sides of the wall, backed with 25 mm deep stone wool insulation 35 kg/m<sup>3</sup>. Minimum annular space 10 mm (A1) and minimum separation between penetration seals 30 mm (A2). Maximum seal size 300 x 300 mm / 504 mm Ø

Construction details:



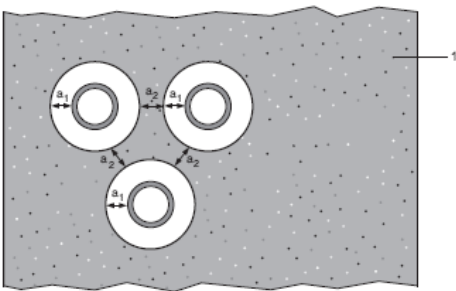
**Configuration 1**

*Option 1*



**Configuration 2**

*Option 2*



**Key**

1 Supporting construction

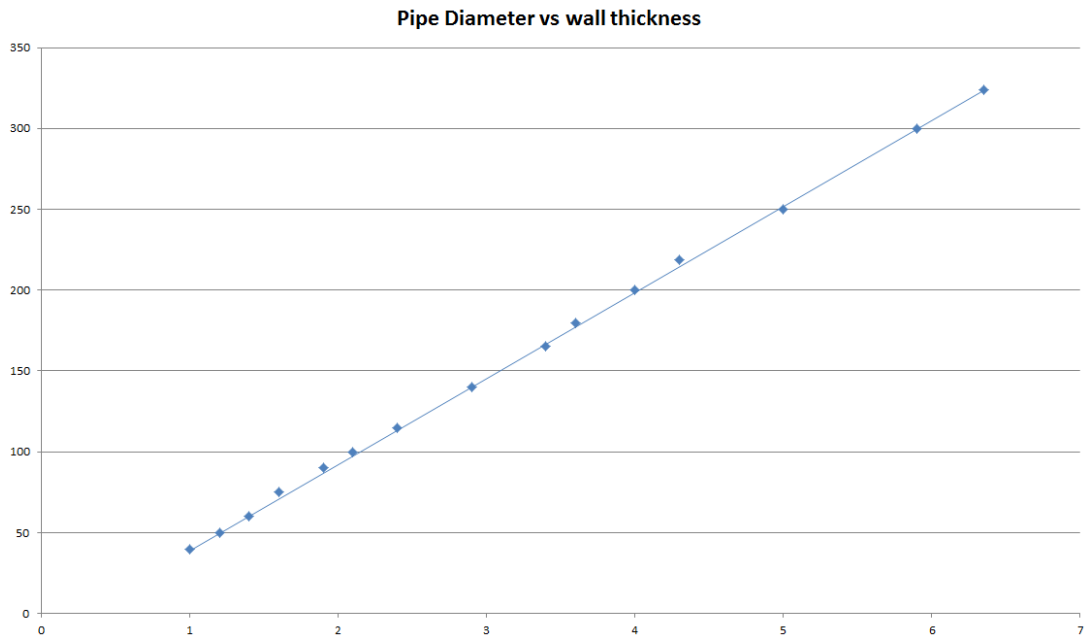
a1 Pipe / top edge of seal separation

a2 Pipe / side edge of seal separation

a3 Pipe / pipe separation

**A.1.7.1 Double side penetration seal with pipes**

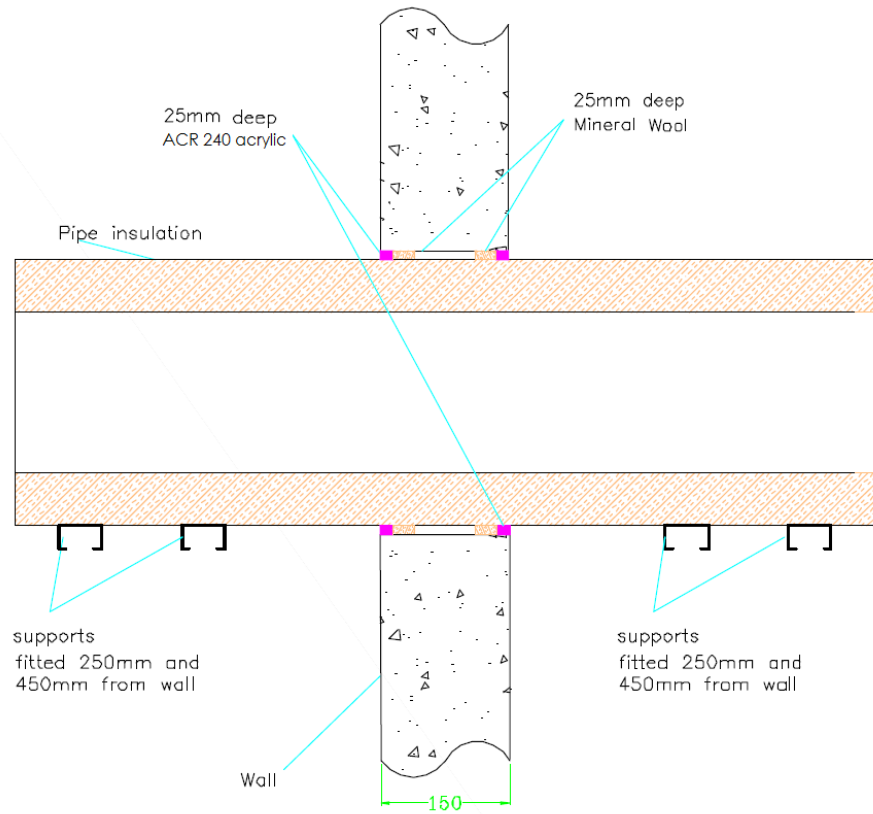
Mild or stainless steel pipe	Insulation	Classification
40 mm diameter/1-14.2 mm wall	20 mm thick stone, mineral wool min. 80 kg/m <sup>3</sup>	EI 240 C/U
40 mm diameter/1-14.2 mm wall*	30-80 mm thick stone, mineral wool min. 80 kg/m <sup>3</sup>	
50 mm diameter/1.2-14.2 mm wall*		
60 mm diameter/1.4-14.2 mm wall*		
75 mm diameter/1.6-14.2 mm wall*		
90 mm diameter/1.9-14.2 mm wall*		
100 mm diameter/2.1-14.2 mm wall*		
115 mm diameter/2.4-14.2 mm wall*		
140 mm diameter/2.9-14.2 mm wall*		
165 mm diameter/ 3.4-14.2 mm wall*		
180 mm diameter/ 3.6-14.2 mm wall*		
200 mm diameter/ 4.0-14.2 mm wall*		
219 mm diameter/ 4.3-14.2 mm wall*		
250 mm diameter/ 5.0-14.2 mm wall*		
300 mm diameter/ 5.9-14.2 mm wall*		
324 mm diameter/ 6.35-14.2 mm wall*		



**A.1.8 Double side penetration seal with metallic pipes with combustible insulation**

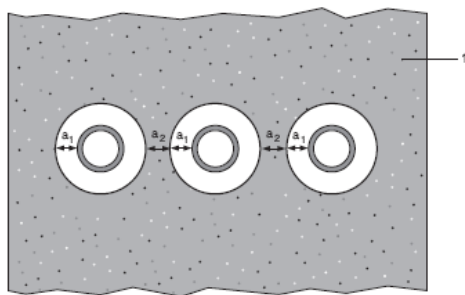
**Penetration Seal:** CS (Continuous Sustained) insulated metallic pipes (single) fitted at any position within the aperture, with 25 mm ACR 240 to both sides of the wall, backed with 25 mm deep stone wool insulation 35 kg/m<sup>3</sup>. Minimum annular space 10 mm (A1) and minimum separation between penetration seals 30 mm (A2). Maximum seal size 300 x 300 mm / 300 mm Ø

Construction details:



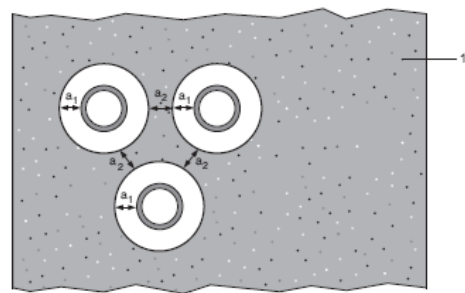
**Configuration 1**

*Option 1*



**Configuration 2**

*Option 2*



**Key**

1 Supporting construction

a1 Pipe / top edge of seal separation

a2 Pipe / side edge of seal separation

a3 Pipe / pipe separation

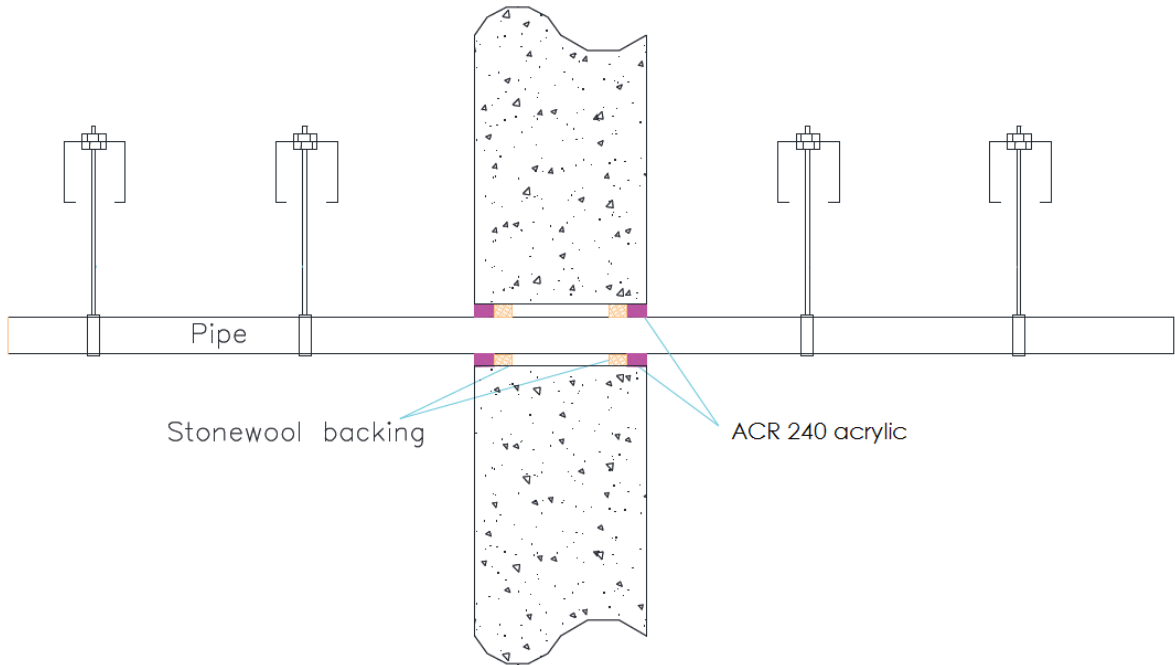
#### A.1.8.1 Double side penetration seal with metallic pipes with combustible insulation

Mild or stainless steel pipe	Insulation	Classification
22 mm diameter/2-11 mm wall	13 mm thick Elastomeric insulation minimum class B-s3,d0	<b>E 240 C/U, EI 180 C/U</b>
22-114 mm diameter/2-14.2 mm wall	13-25 mm thick Elastomeric insulation minimum class B-s3,d0	<b>E 120 C/U, EI 90 C/U</b>
22-114 mm diameter/2-14.2 mm wall	25-50 mm thick Elastomeric insulation minimum class B-s3,d0	<b>EI 60 C/U</b>

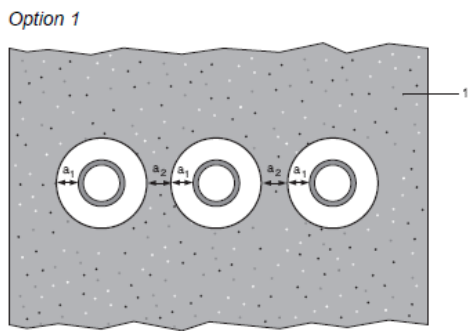
**A.1.9 Double side penetration seal with plastic pipes**

**Penetration Seal:** Plastic pipes (single) fitted at any position within the aperture, with 25 mm ACR 240 to both sides of the wall, backed with 25 mm deep stone wool insulation 35 kg/m<sup>3</sup>. Minimum annular space 10 mm (A1) and minimum separation between penetration seals 30 mm (A2). Maximum seal size 300 x 300 mm / 300 mm Ø

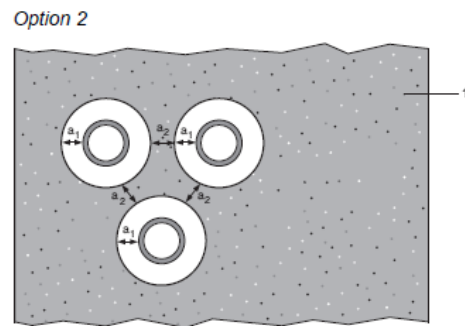
Construction details:



**Configuration 1**



**Configuration 2**



**Key**

1 Supporting construction

a1 Pipe / top edge of seal separation

a2 Pipe / side edge of seal separation

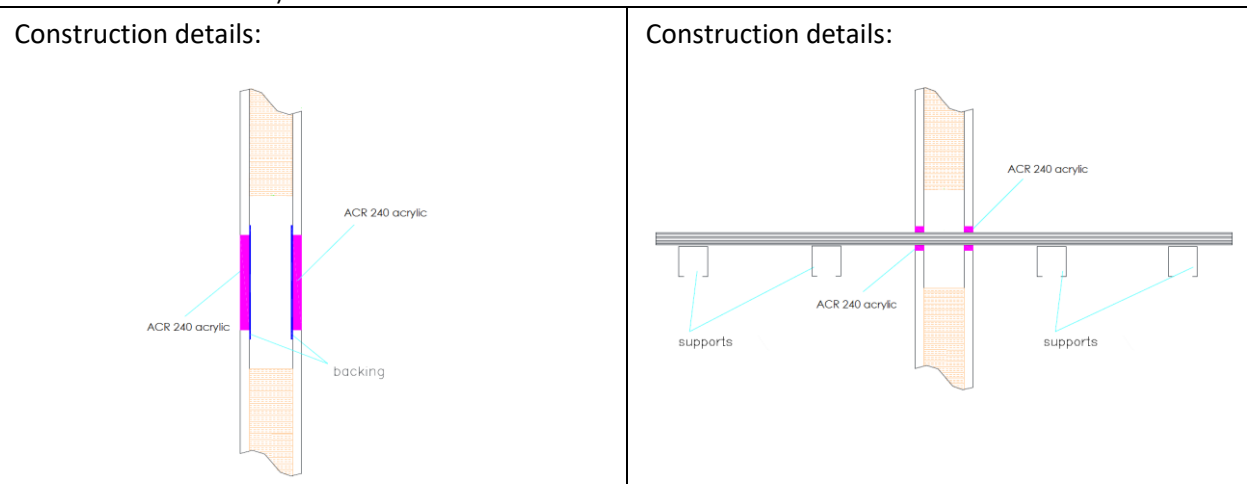
**A.1.9.1 Double side penetration seal with plastic pipes**

Pipe material	Size	Classification
PVC-U pipe according to EN 1329-1, EN 1452-1 and EN 1453-1, PVC-C according to EN 1566-1	32 mm diameter/1.6 mm wall	<b>EI 240 U/C</b>
PP pipe according to EN 1451-1	32 mm diameter/2.0-4.4 mm wall	<b>EI 180 C/U</b>
PE pipe according to EN 1519-1, EN 12201-2 and EN 12666-1, ABS according to EN 1455-1 and pipes made from SAN+PVC according to EN 1565-1	20-32 mm diameter/2.0 mm wall	<b>EI 240 C/U</b>

## A.2 Flexible wall constructions according to 2. 2) with wall thickness of minimum 75 mm

### A.2.1 Double side penetration seal with cables

**Penetration Seal:** Cables (single or bundles up to 100 mm  $\varnothing$ ) and pipes fitted at any position within the aperture, with ACR 240 to both sides of the wall. Minimum annular space 10 mm (A1) and minimum separation between penetration seals 30 mm (A2), maximum seal size 150 x 150 mm / 344 mm diameter (when incorporating a pipe of seal diameter -20 mm).

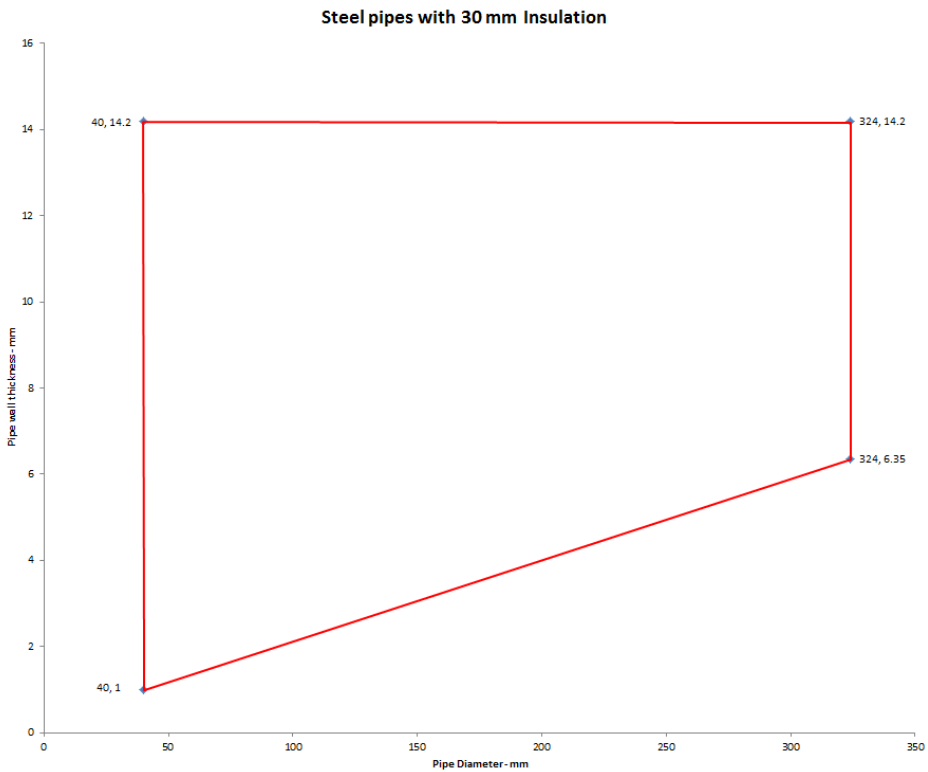
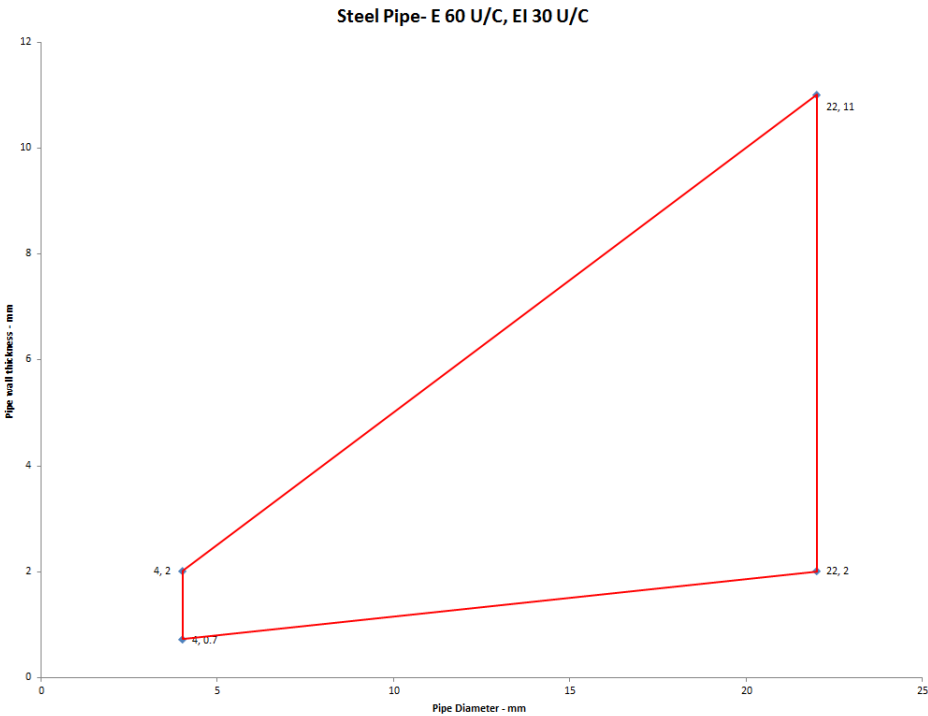


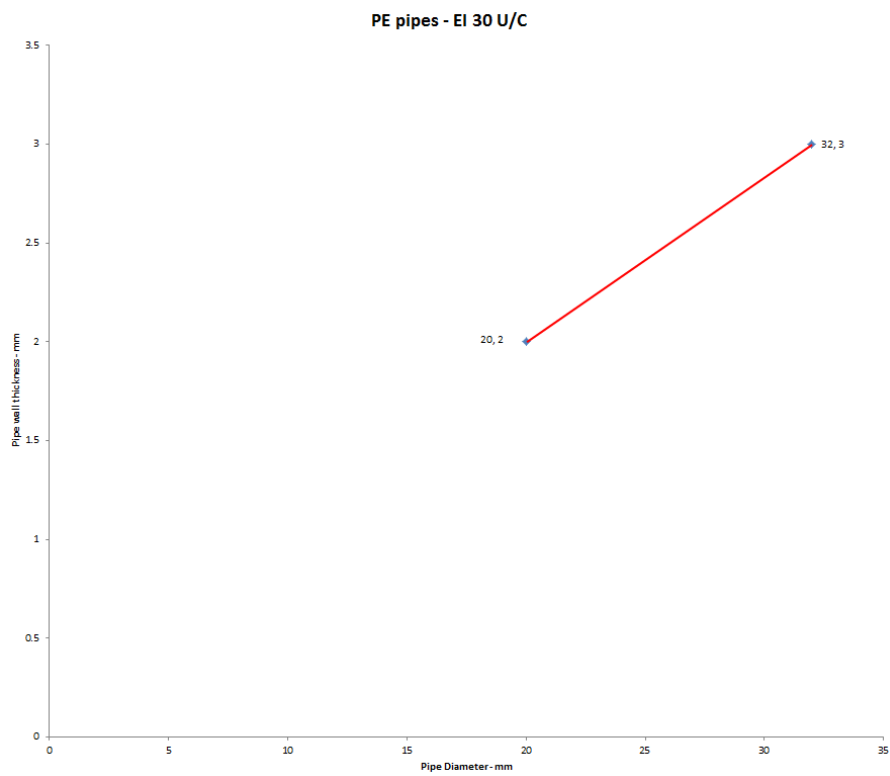
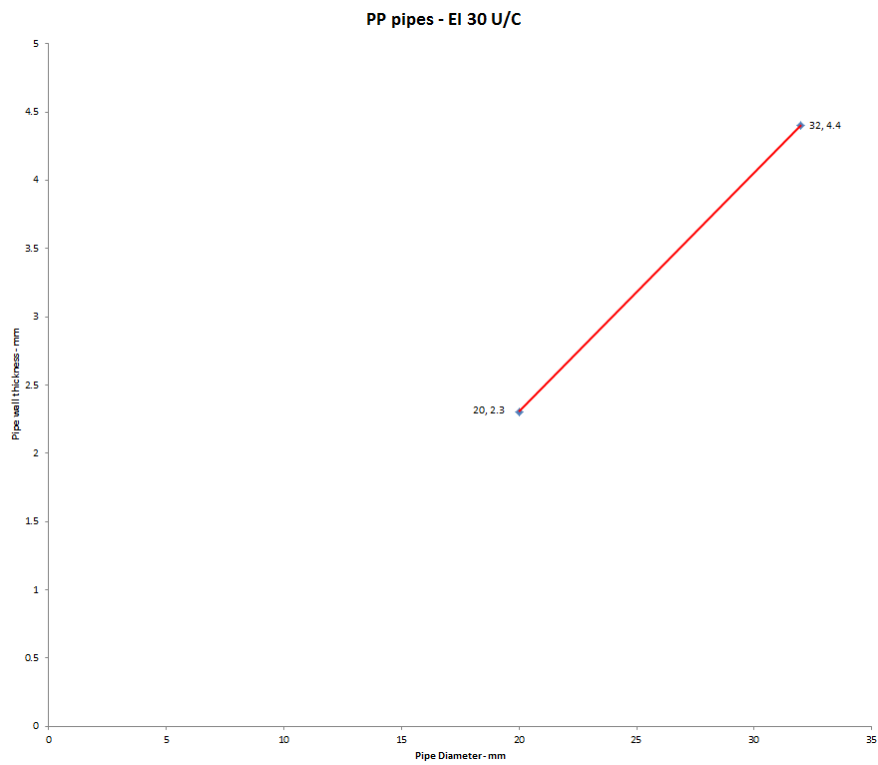
#### A.2.1.1

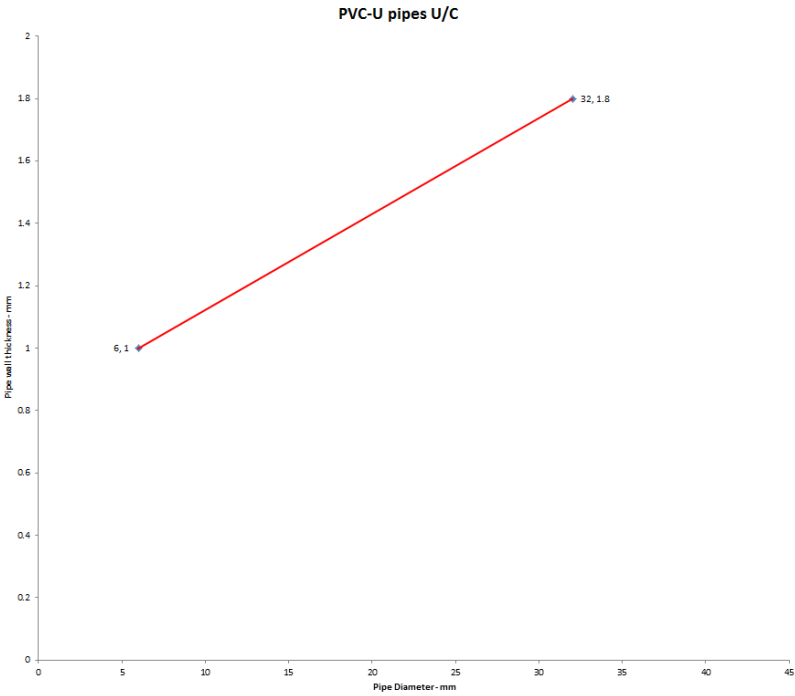
Services	Sealant depth	Backing	Classification
None (blank)	12.5 mm	Any material	EI 60
Cables up to 21 mm Ø, single		None	E 60, EI 45
Cables up to 21 mm Ø, in bundles up to 100 mm Ø			E 45, EI 30
Mild or stainless steel pipe			
4 mm diameter /0.7-2.0 mm wall	12.5 mm	None	E 60 C/U, EI 45 C/U
5-22 mm diameter /0.7-11 mm wall*			E 60 C/U, EI 30 C/U
Mild or stainless steel pipe with 80 kg/m³ density stone wool insulation Continuous Sustained (CS)			
40 mm diameter /1-14.2 mm wall, 20 mm insulation	12.5 mm	None	E 60 C/U, EI 45 C/U
40-324 mm diameter /1.0-14.2 mm wall, 30 mm insulation*			
PVC-U pipe according to EN 1329-1, EN 1452-1 and EN 1453-1, PVC-C according to EN 1566-1			
6-32 mm Ø/1.0-1.8 mm wall, with bundle of cables up to 21 mm diameter*	12.5 mm	None	E 60 U/C, EI 45 U/C
PP pipe according to EN 1451-1			
20 mm Ø/2.3 mm wall	12.5 mm	None	EI 45 U/C
21-32 mm Ø/2.3-4.4 mm wall*			EI 30 U/C
21-32 mm Ø/2.3-4.4 mm wall, with bundle of cables up to 21 mm diameter*			E 45 U/C, EI 30 U/C
PE pipe according to EN 1519-1, EN 12201-2 and EN 12666-1, ABS according to EN 1455-1 and pipes made from SAN+PVC according to EN 1565-1			
20 mm Ø/2.0 mm wall	12.5 mm	None	EI 45 U/C
21-32 mm Ø/2.0-3.0 mm wall*			EI 30 U/C
21-32 mm Ø/2.0-3.0 mm wall, with bundle of cables up to 21 mm* diameter			E 45 U/C, EI 30 U/C

\* See below graphs for interpolated pipe sizes





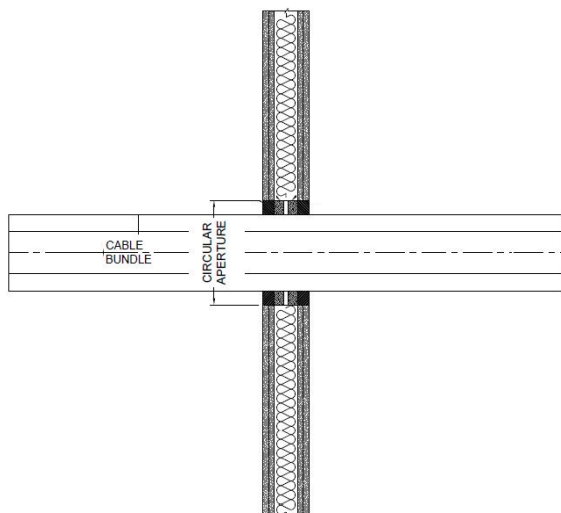




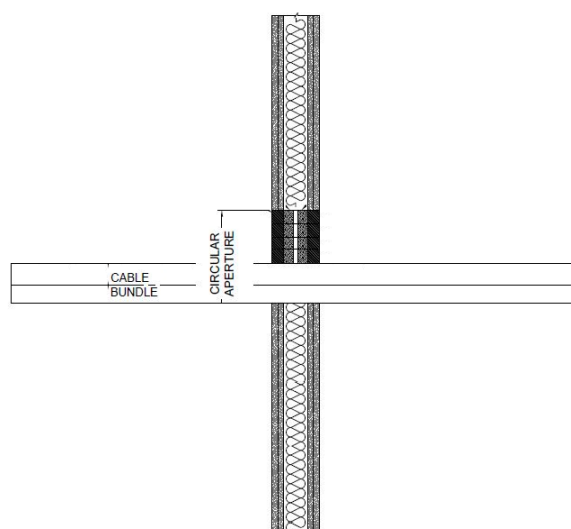
**A.3 Flexible wall constructions according to 2. 2) with wall thickness of minimum 100 mm****A.3.1 Double side penetration seal with cables**

**Penetration Seal:** Cables (single or bundles up to 100 mm Ø) fitted at any position within the aperture, with ACR 240 to both sides of the wall, backed with stone wool insulation 40kg/m<sup>3</sup>, 140 kg/m<sup>3</sup> or 'Würth FP Backing'.

Construction details:



Construction details:

**A.3.1.1**

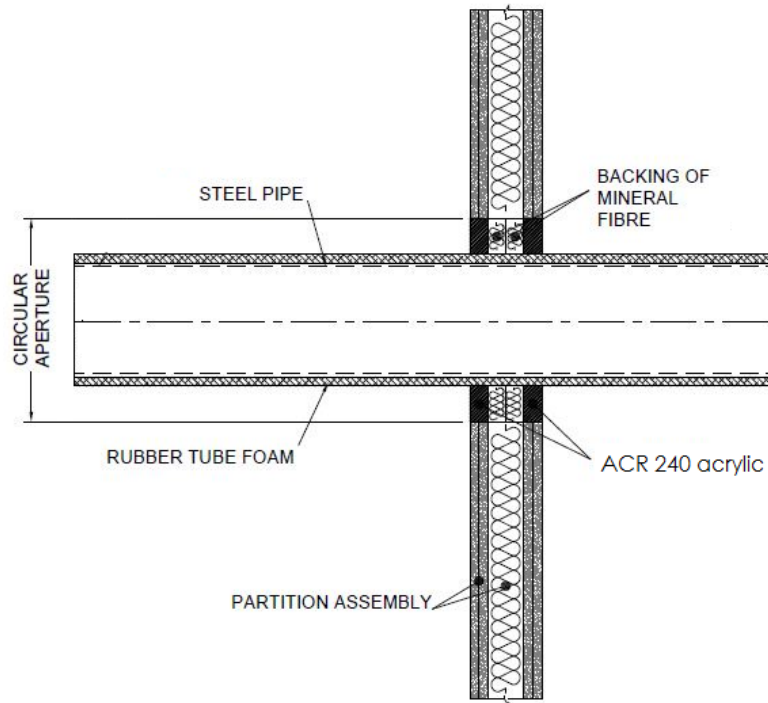
Services	Sealant depth	Backing	Maximum aperture	Classification
None (blank)	12.5 mm	Stone wool 20 mm deep 35-140 kg/m <sup>3</sup>	300 x 300 mm*	<b>EI 120</b>
Electrical cables up to 21 mm Ø, single or in bundles up to 100 mm Ø	25 mm	Stone wool 20 mm deep 40 kg/m <sup>3</sup>		<b>EI 120</b>
Electrical cables up to 80 mm Ø, single or in bundles up to 100 mm Ø		25 mm Würth FP Backing		<b>E 120, EI 60</b>
Cables up to 21 mm Ø single or in bundles up to 100 mm Ø		Stone wool 20 mm deep 40 kg/m <sup>3</sup>		<b>EI120</b>
Single 'E cable' - 1 x 185 mm <sup>2</sup> core HD603.3 electrical cable with PVC insulation, PVC sheath and 23-27 mm diameter	12.5 mm	Stone wool 20 mm deep/140 kg/m <sup>3</sup>		<b>E 120, EI 60</b>

\* Or 30 mm wide x 3000 mm high for cables up to 21 mm Ø

### A.3.2 Double side penetration seal with metallic pipes

**Penetration Seal:** CS (Continuous Sustained) insulated metallic pipes (single) fitted at any position within the aperture, with ACR 240 to both sides of the wall, backed with stone wool insulation or 'Würth FP Backing', 300 x 300 mm maximum seal size.

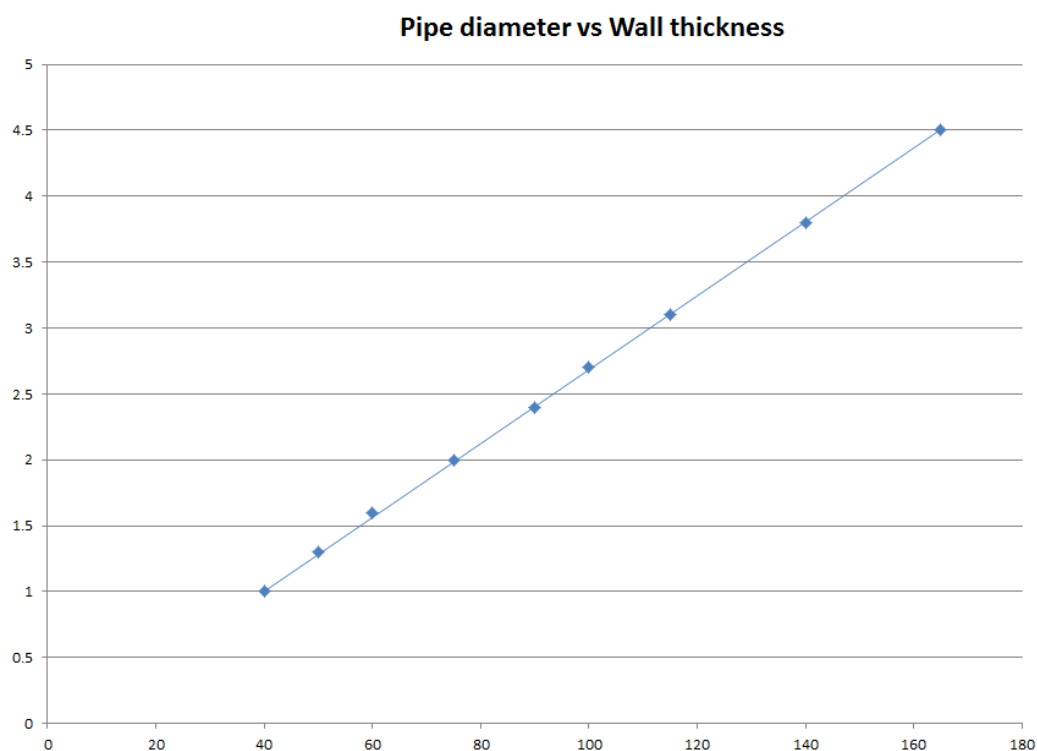
Construction details:



**A.3.2.1**

Services	Sealant depth	Backing	Insulation	Classification
Mild or stainless steel pipe				
22 mm diameter/3-10 mm wall	25 mm	Stone wool 25 mm deep 35 kg/m <sup>3</sup>	None	EI 120 C/C
40 mm diameter/1-14.2 mm wall	12.5 mm	20 mm Stone wool 40 kg/m <sup>3</sup>		EI 120 C/C
40 mm diameter/1-14.2 mm wall*	25 mm	25 mm Würth FP Backing	13 -19 mm Elastomeric insulation minimum class B-s3,d0	E 120 C/C EI 60 C/C
50 mm diameter/1.3-14.2 mm wall*				
60 mm diameter/1.6-14.2 mm wall*				
75 mm diameter/2-14.2 mm wall*				
90 mm diameter/2.4-14.2 mm wall*				
100 mm diameter/2.7-14.2 mm wall*				
115 mm diameter/3.1-14.2 mm wall*				
140 mm diameter/3.8-14.2 mm wall*				
165 mm diameter/ 4.5-14.2 mm wall*				

\* Typical pipe diameters shown, see below graph for intermediate sizes

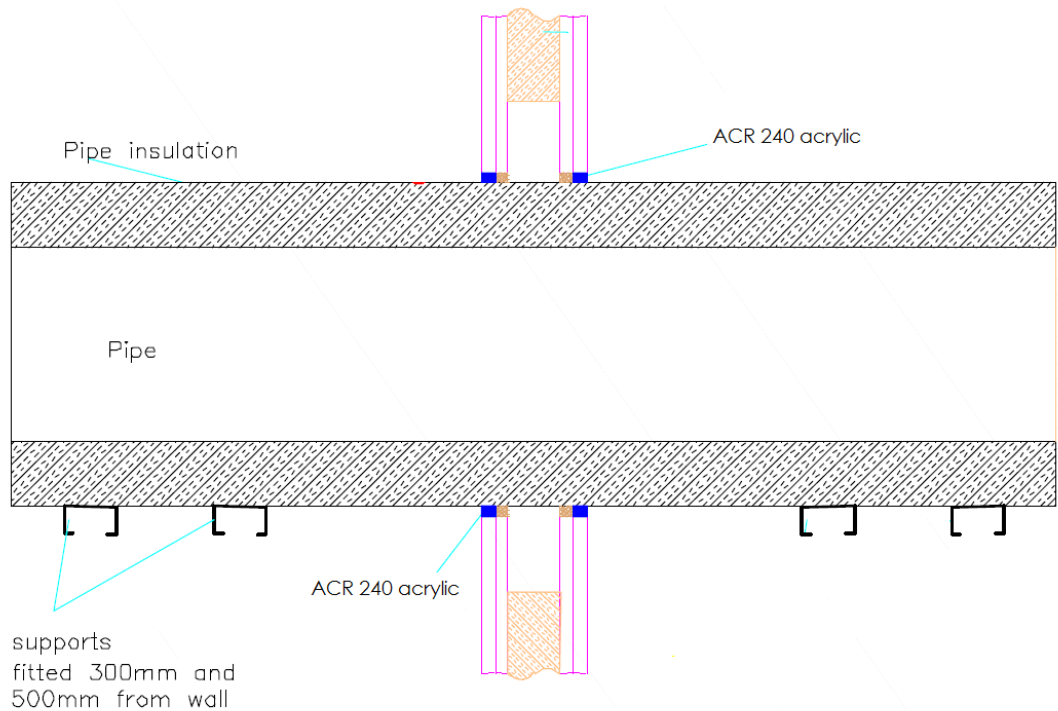


Services	Sealant depth	Backing	Insulation	Classification
Copper pipe				
12 mm diameter/1 mm wall	25 mm	25 mm Würth FP Backing	9 mm Elastomeric insulation minimum class B-s3,d0	EI 120 C/C
12-54 mm diameter/1-1.2 mm wall			9-13 mm Elastomeric insulation minimum class B-s3,d0	E 120, EI 60 C/C
12-54 mm diameter/1-1.2 mm wall			13-25 mm Elastomeric insulation minimum class B-s3,d0	EI 60 C/C
Alupex Composite Pipe				
16 mm diameter/2.25 mm wall	25 mm	25 mm Würth FP Backing	9 mm Elastomeric insulation minimum class B-s3,d0	EI 120 C/C
16 mm diameter/2.25 mm wall			9-25 mm Elastomeric insulation minimum class B-s3,d0	EI 60 C/C
20 mm diameter/2.5 mm wall				
26 mm diameter/3 mm wall				
32 mm diameter/3 mm wall				
40 mm diameter/3.5 mm wall				
50 mm diameter/4 mm wall				
63 mm diameter/4.5 mm wall				
75 mm diameter/4.7 mm wall				

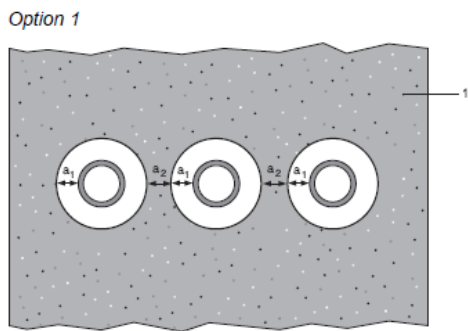
**A.3.3 Double side penetration seal with metallic pipes**

**Penetration Seal:** CS (Continuous Sustained) insulated metallic pipes (single) fitted at any position within the aperture, with 12.5 mm ACR 240 to both sides of the wall, backed with 12.5 mm deep stone wool insulation 35 kg/m<sup>3</sup>. Minimum annular space 10 mm (A1) and minimum separation between penetration seals 30 mm (A2). Maximum seal size 300 x 300 mm / 504 mm Ø

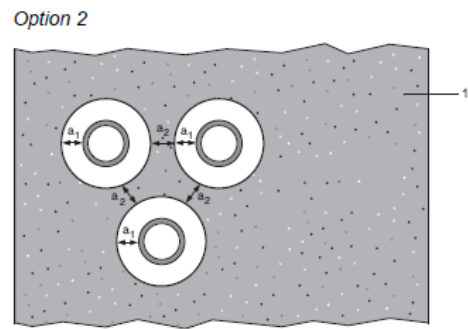
Construction details:



**Configuration 1**



**Configuration 2**



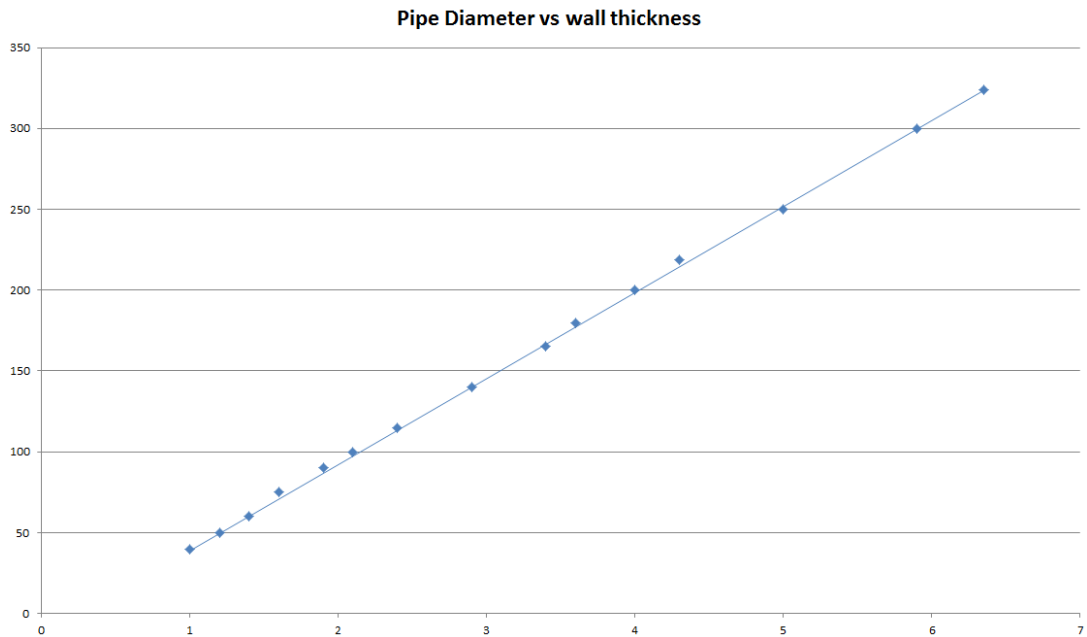
**Key**

- 1 Supporting construction
- a1 Pipe / top edge of seal separation
- a2 Pipe / side edge of seal separation
- a3 Pipe / pipe separation



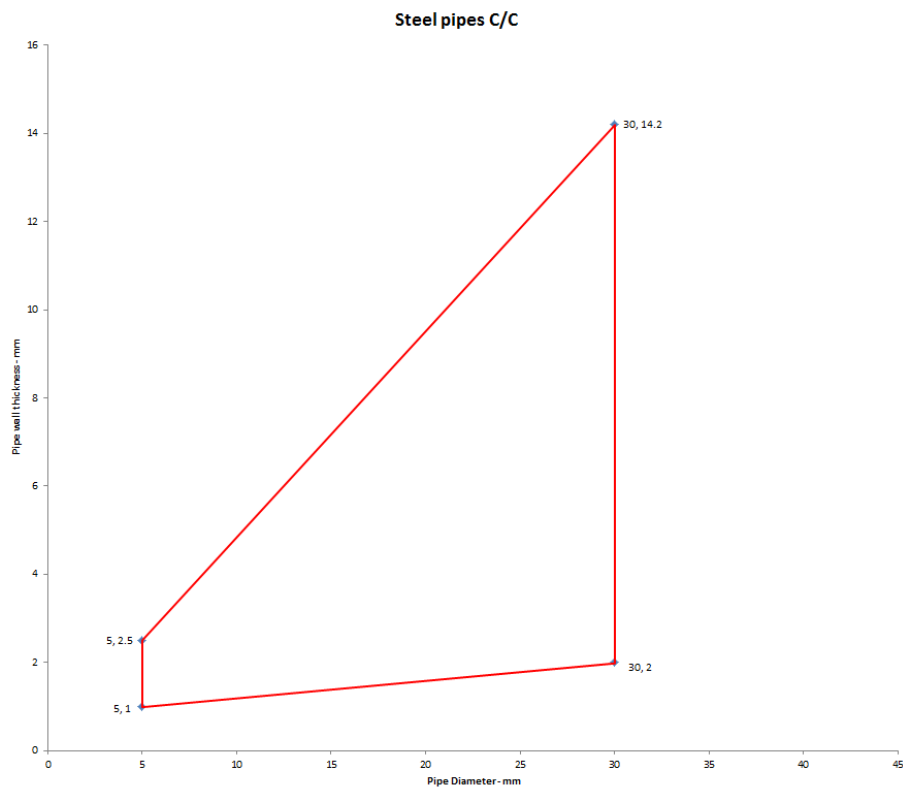
**A.3.3.1 Double side penetration seal with pipes**

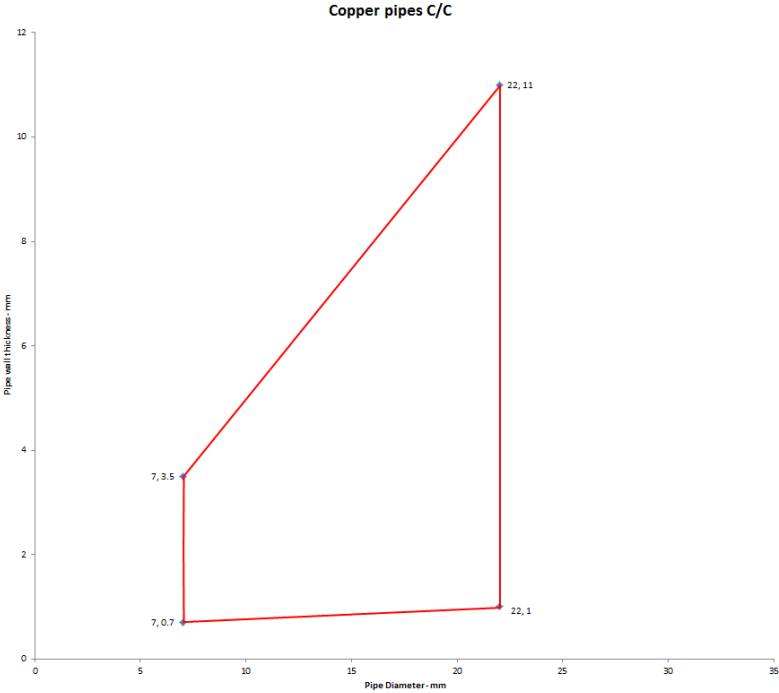
Mild or stainless steel pipe	Insulation	Classification
40 mm diameter/1-14.2 mm wall	20 mm thick stone, mineral wool min. 80 kg/m <sup>3</sup>	E 120 C/U EI 90 C/U
40 mm diameter/1-14.2 mm wall*	30-80 mm thick stone, mineral wool min. 80 kg/m <sup>3</sup>	
50 mm diameter/1.2-14.2 mm wall*		
60 mm diameter/1.4-14.2 mm wall*		
75 mm diameter/1.6-14.2 mm wall*		
90 mm diameter/1.9-14.2 mm wall*		
100 mm diameter/2.1-14.2 mm wall*		
115 mm diameter/2.4-14.2 mm wall*		
140 mm diameter/2.9-14.2 mm wall*		
165 mm diameter/ 3.4-14.2 mm wall*		
180 mm diameter/ 3.6-14.2 mm wall*		
200 mm diameter/ 4.0-14.2 mm wall*		
219 mm diameter/ 4.3-14.2 mm wall*		
250 mm diameter/ 5.0-14.2 mm wall*		
300 mm diameter/ 5.9-14.2 mm wall*		
324 mm diameter/ 6.35-14.2 mm wall*		



PEX pipe in pipe system	Insulation	Classification
15 mm diameter x 2.5 mm wall inner /25mm diameter outer	None	EI 120 C/C
Alupex pipe	Insulation	Classification
16-20 mm diameter/2.0 mm wall	None	EI 120 C/C
Mild or Stainless Steel pipe	Insulation	Classification
4 mm diameter/1.0-2.0 mm wall	None	EI 90 C/C
5-30 mm diameter/1.0-14.2 mm wall*		EI 120 C/U
30 mm diameter/2.0-14.2 mm wall		EI 120 C/U
Copper or Steel pipe	Insulation	Classification
6 mm diameter/0.7-3.0 mm wall	None	E 90 C/C, EI 60 C/C
7-22 mm diameter/0.7-11 mm wall		E 90 C/C, EI 30 C/C

\* See below graphs for interpolated pipe sizes

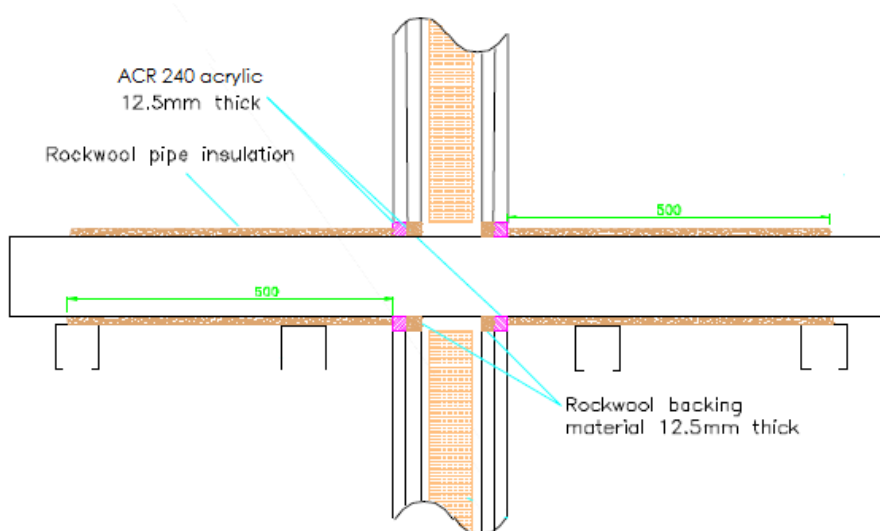




### A.3.4 Double side penetration seal with composite pipes

**Penetration Seal:** CI (Continuous Interrupted) or CS (Continuous Sustained) insulated composite pipes (single) fitted at any position within the aperture, with ACR 240 to both sides of the wall, minimum 10 mm seal width around service, maximum seal size 300 x 300 mm, backed with stonewool.

Construction details:



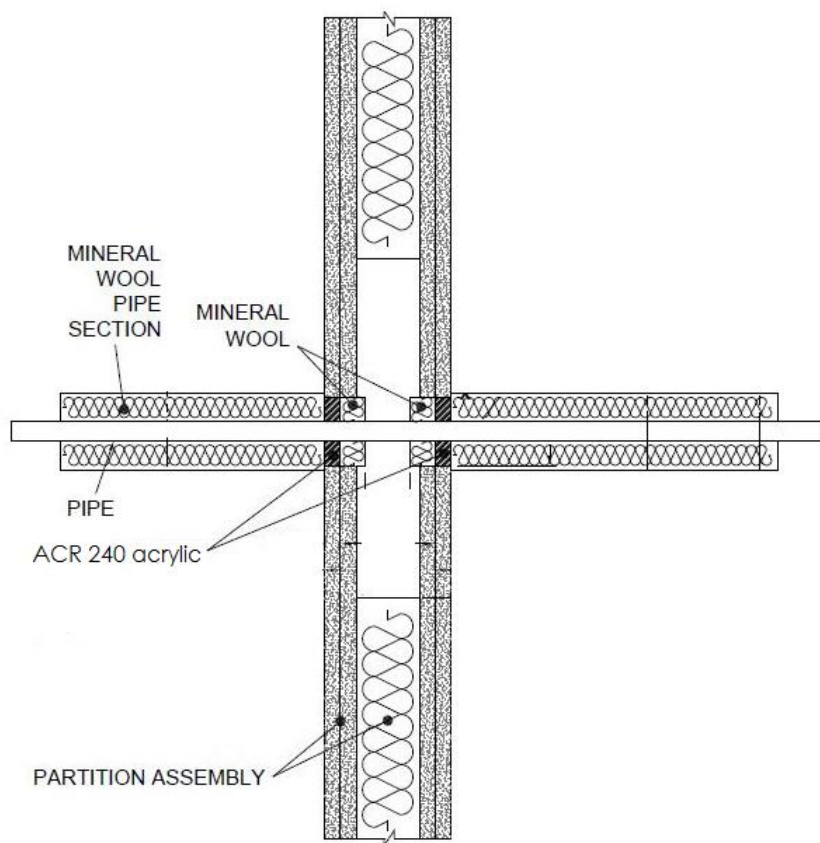
#### A.3.4.1

Services	Sealant depth	Backing	Insulation (minimums)	Classification
Alupex Composite Pipe				
16 mm diameter/2.25 mm wall	12.5 mm	12.5 mm stonewool 40 kg/m <sup>3</sup>	20 mm stonewool 80 kg/m <sup>3</sup> , 500 mm length from both sides of the seal	EI 120 C/C
20 mm diameter/2.5 mm wall				
26 mm diameter/3 mm wall				
32 mm diameter/3 mm wall				
40 mm diameter/3.5 mm wall				
50 mm diameter/4 mm wall				
63 mm diameter/4.5 mm wall				
75 mm diameter/4.7 mm wall				

### A.3.5 Double side penetration seal with metallic (and composite) pipes

**Penetration Seal:** LI (Local Interrupted) of minimum length stated below or CI (Continuous Interrupted) insulated metallic pipes and composite (single) fitted at any position within the aperture, with ACR 240 to both sides of the wall, min. 10 mm seal width around service, backed with stone wool insulation or 'Würth FP Backing'.

Construction details:



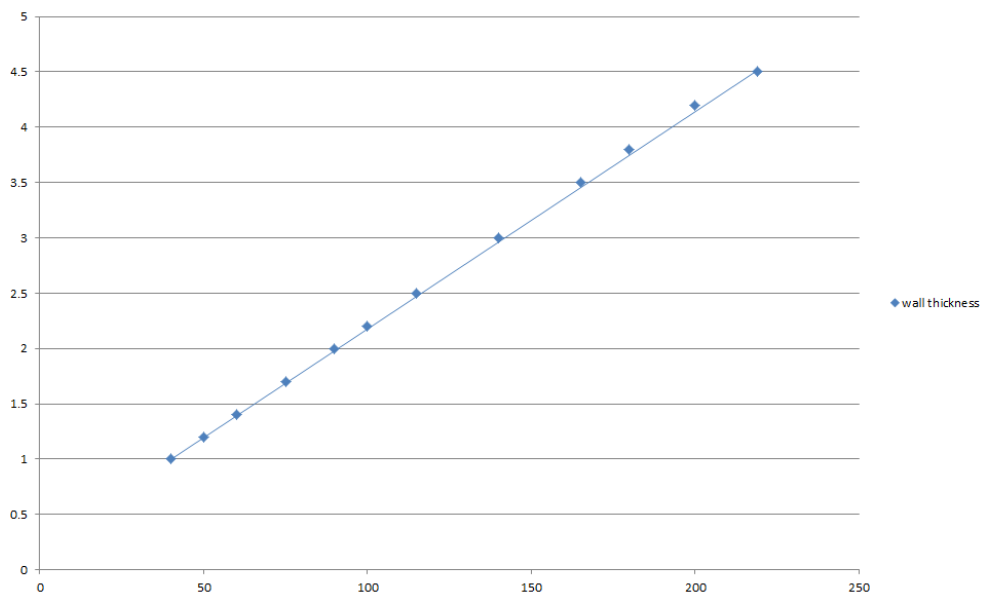
#### A.3.5.1

Services	Sealant depth	Backing	Insulation (minimum)	Classification
<b>Maximum aperture size 300 x 300 mm</b>				
Copper pipe up to 54 mm diameter/1-14.2 mm wall	12.5 mm	20 mm Stone wool 40 kg/m <sup>3</sup>	500 mm length of 20 mm stone wool 80 kg/m <sup>3</sup>	<b>EI 120 C/U</b>
Alupex composite pipe 75 mm diameter/7.5 mm wall		20 mm Stone wool 140 kg/m <sup>3</sup>	600 mm length of 25 mm Würth FP Backing	<b>EI 60 C/U</b>

Services	Sealant depth	Backing	Insulation (minimum)	Classification
Mild or stainless steel pipe				
<b>Maximum aperture size 300 x 300 mm</b>				
40 mm diameter/1-14.2 mm wall	12.5 mm	20mm Stone wool 40 kg/m <sup>3</sup>	500 mm length of 20 mm stone wool 80 kg/m <sup>3</sup>	<b>EI 120 C/U</b>
40 mm diameter/1-14.2 mm wall*			500 mm length of 30 mm stone wool 80 kg/m <sup>3</sup>	<b>E 120, EI 90 C/U</b>
50 mm diameter/1.2-14.2 mm wall*				
60 mm diameter/1.4-14.2 mm wall*				
75 mm diameter/1.7-14.2 mm wall*				
90 mm diameter/2-14.2 mm wall*				
100 mm diameter/2.2-14.2 mm wall*				
115 mm diameter/2.5-14.2 mm wall*				
140 mm diameter/3-14.2 mm wall*				
165 mm diameter/3.5-14.2 mm wall*	12.5 mm	20mm Stone wool 40 kg/m <sup>3</sup>	500 mm length of 30 mm stone wool 80 kg/m <sup>3</sup>	<b>E 120, EI 90 C/U</b>
180 mm diameter/3.8-14.2 mm wall*				
200 mm diameter/4.2-14.2 mm wall*				
219 mm diameter/4.5-14.2 mm wall*				

\* Typical pipe diameters shown, see below graph for intermediate sizes

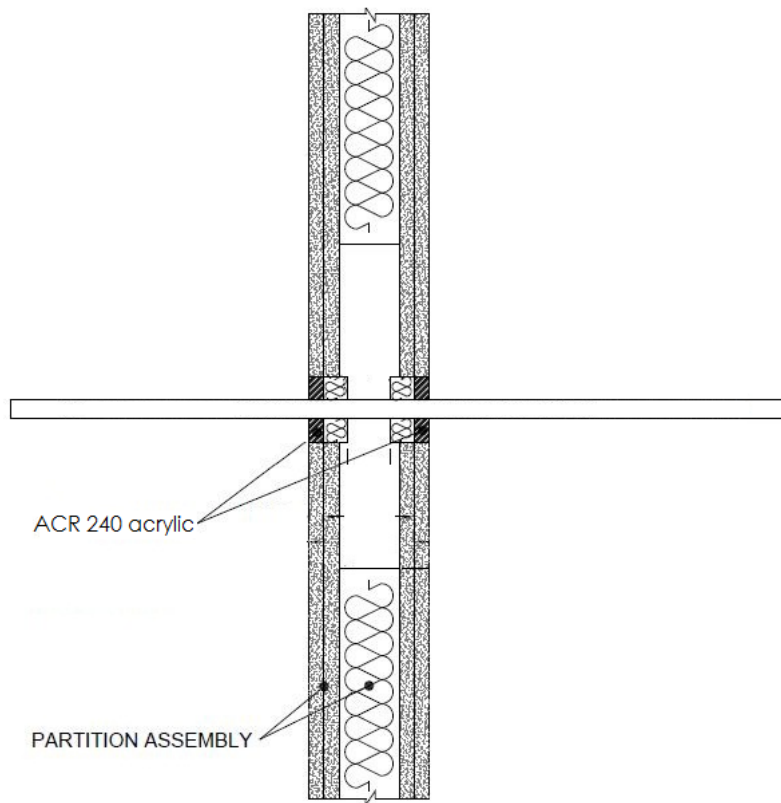
**Pipe diameter vs Wall thickness**



**A.3.6 Double side penetration seal with plastic pipes**

**Penetration Seal:** Combustible pipes (single) fitted at any position within the aperture, with ACR 240 to both sides of the wall, 10 mm seal width around PVC pipes and 29 mm around PP pipes. No backing material is required but PE foam may be utilised.

Construction details:

**A.3.6.1**

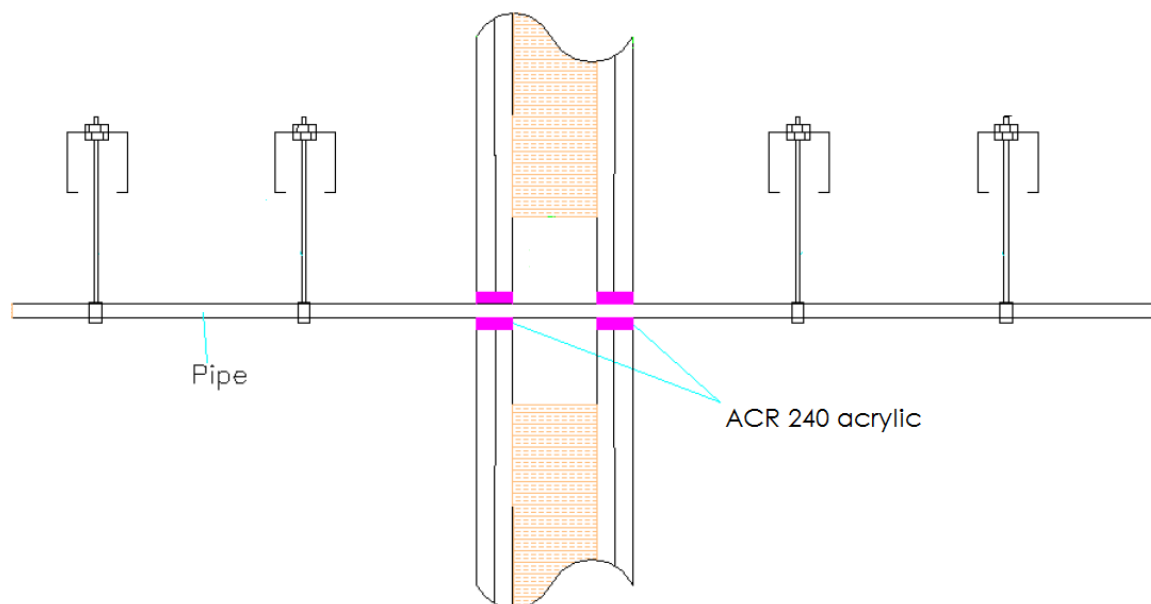
Services	Sealant depth	Backing	Aperture Ø	Classification
PVC-U pipe according to EN 1329-1, EN 1452-1 and EN 1453-1, PVC-C according to EN 1566-1* 32 mm Ø/1.7 mm wall	12.5 mm	None required	52 mm	EI 45 U/C, EI 45 C/C
	25 mm			EI 90 U/C, EI 90 C/C
PP pipe according to EN 1451-1 32 mm Ø/2 mm wall	25 mm		90 mm	

\* In Germany the pipes have additionally to comply with DIN 19531-10

### A.3.7 Double side penetration seal with plastic pipes

**Penetration Seal:** Combustible pipes (single) fitted at any position within the aperture, with ACR 240 to both sides of the wall, Minimum annular space 10 mm and minimum separation between penetration seals 30 mm (A2).

Construction details:

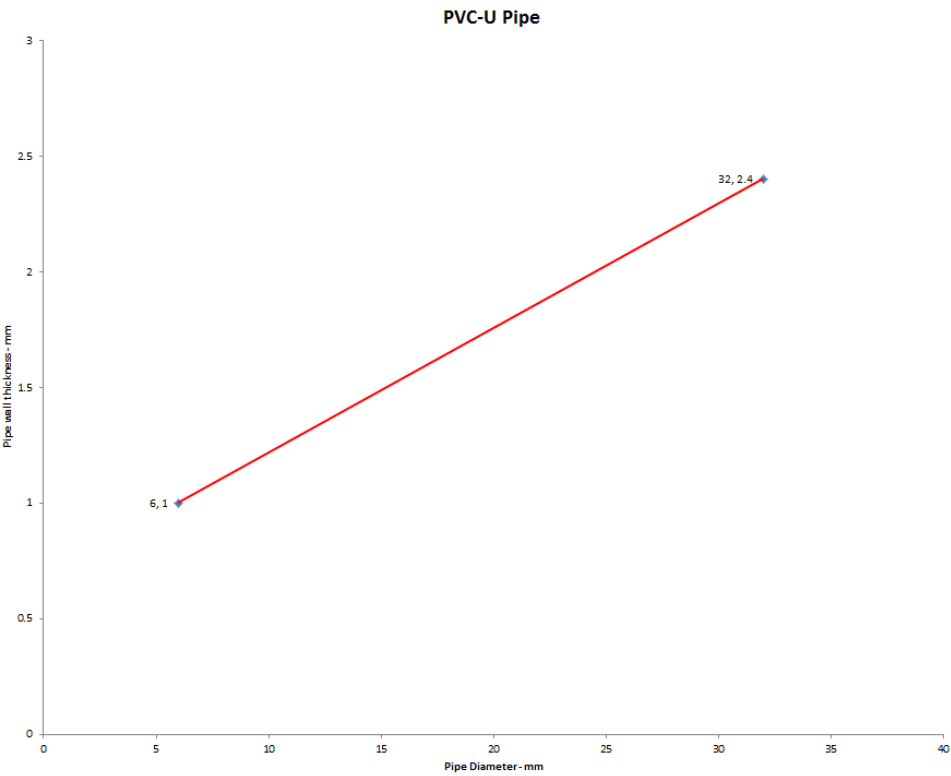


#### A.3.7.1

Pipe material	Sealant depth	Pipe size	Maximum Annular space	Classification
PVC-U pipe according to EN 1329-1, EN 1452-1 and EN 1453-1, PVC-C according to EN 1566-1	25 mm	6-32 mm Ø/1.0-2.4 mm wall*	10 mm	EI 120 U/C
			30 mm	E 120 U/C, EI 90 U/C
20 mm Ø/2.2 mm wall		30 mm		EI 120 U/C
20 mm Ø/2.2-4.4 mm wall*			EI 60 U/C	
PP pipe according to EN 1451-1		20 mm Ø/2.0 mm wall	10 mm	EI 60 U/C
			30 mm	EI 120 U/C

\* See below graphs for interpolated pipe sizes



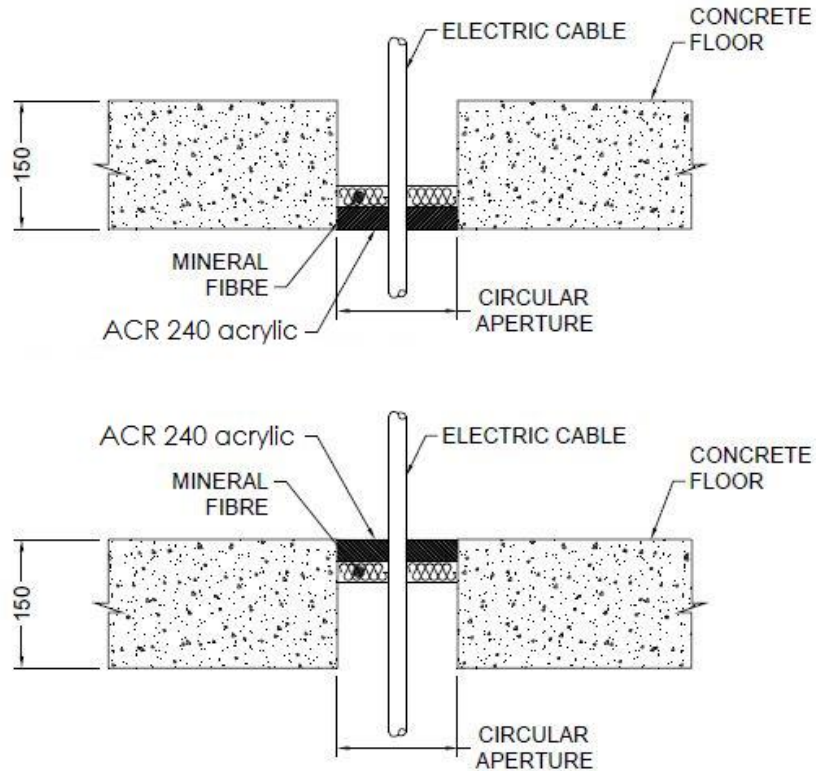


#### A.4 Rigid floor constructions according to 1.2.1 with floor thickness of minimum 150 mm

##### A.4.1 Single side penetration seal with cables

**Penetration Seal:** Cables (single) fitted at any position within the aperture, min. 30 mm from the edges, with ACR 240 to either side of the floor (or at any position in between), backed with 'Würth FP Backing'.

Construction details:



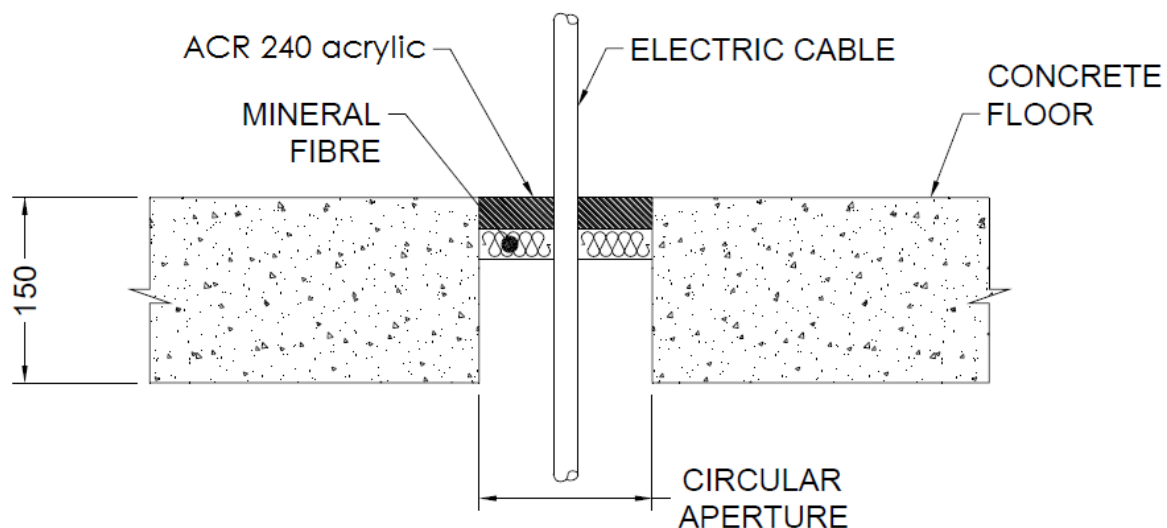
##### A.4.1.1

Services	Sealant depth	Backing	Aperture	Classification
Single electrical cables up to 21 mm $\varnothing$	25 mm	Würth FP Backing 25 mm deep	82 mm $\varnothing$ or max. 100 x 1000 mm	<b>E 120, EI 60</b>

#### A.4.2 Single side penetration seal with cables

**Penetration Seal:** Cables fitted with ACR 240 to the top side of the floor, backed with stone wool insulation 35kg/m<sup>3</sup> or Würth FP Backing. Maximum seal size of 300 x 300 mm and minimum separation between cables and the edge of the seal of 10 mm.

Construction details:



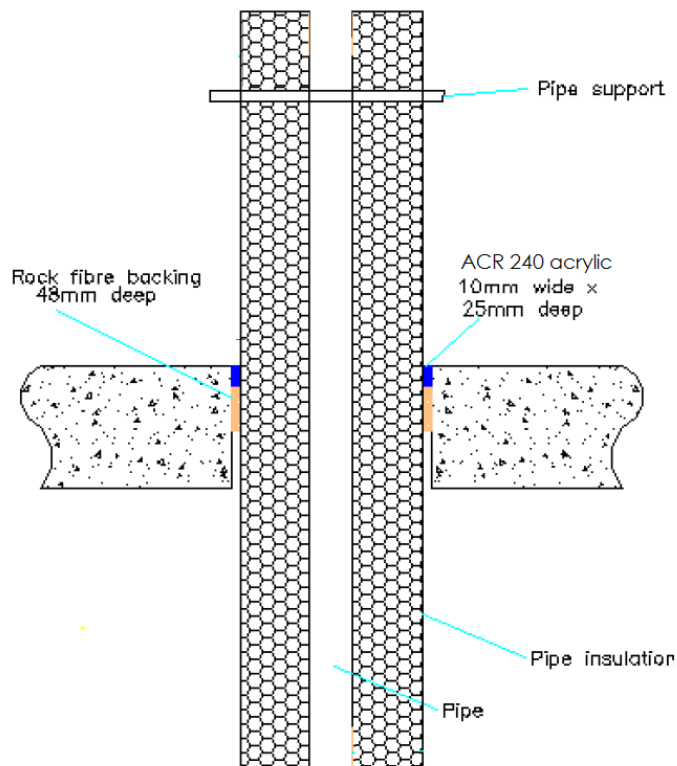
##### A.4.2.1

Services	Sealant depth	Backing	Insulation	Classification
Blank seals	15 mm	20 mm Stone wool 35 kg/m <sup>3</sup>	None	E 90 EI 60
	25 mm	25 mm Stone wool 35 kg/m <sup>3</sup>		EI 120
Electric cables up to 21 mm diameter, single.		48 mm Würth FP Backing		EI 240
23-27 mm diameter, 1 mm × 185 mm <sup>2</sup> core, PVC sheath and insulation electrical cable, single				E 120 EI 90
				EI 240

### A.4.3 Single side penetration seal with pipes

**Penetration Seal:** Pipes fitted at any position within the aperture, with ACR 240 to the top face of the floor, backed with 48 mm stone wool 33kg/m<sup>3</sup>. Minimum annular space 10 mm (A1) and minimum separation between penetration seals 30 mm (A2), maximum seal size 300 x 300 mm / 300 mm diameter.

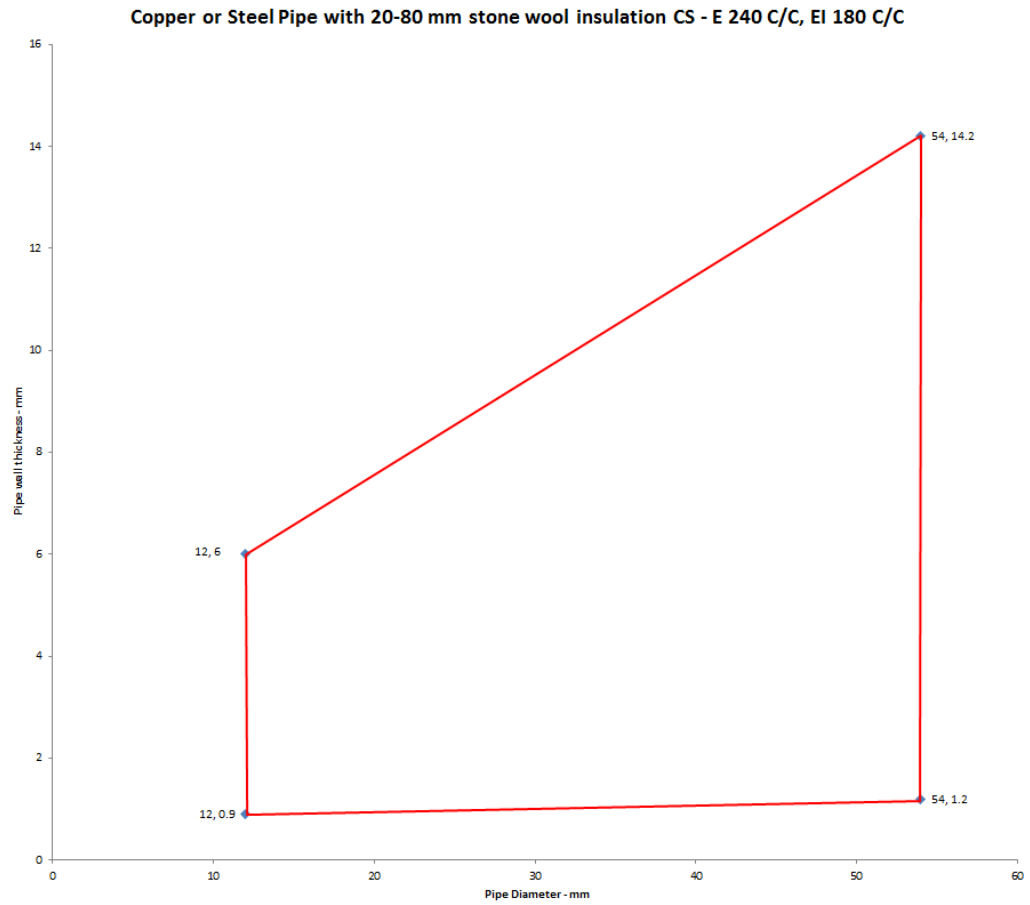
Construction details:



#### A.4.3.1

Services	Sealant depth	Backing	Classification
Mild or stainless steel pipe			
4 -16 mm diameter /1.0-8.0 mm wall	25 mm	48 mm stone wool	EI 120 C/U
Copper or steel pipe			
6 mm diameter /0.7-3.0 mm wall	25 mm	48 mm stone wool	EI 120 C/C
6 -15 mm diameter /0.7-7.5 mm wall			E 120 C/C, EI 60 C/C
Copper or steel pipe with 80 kg/m <sup>3</sup> density stone wool insulation Continuous Sustained (CS)			
12 mm diameter/0.9-6 mm wall, 20-80 mm insulation	25 mm	48 mm stone wool	EI 240 C/C
13-54 mm diameter/0.9-14.2 mm wall, 20-80 mm insulation*			E 240 C/C, EI 180 C/C
Alupex Pipe			
16 -20 mm diameter/2.0 mm wall	25 mm	48 mm stone wool	EI 120 C/C

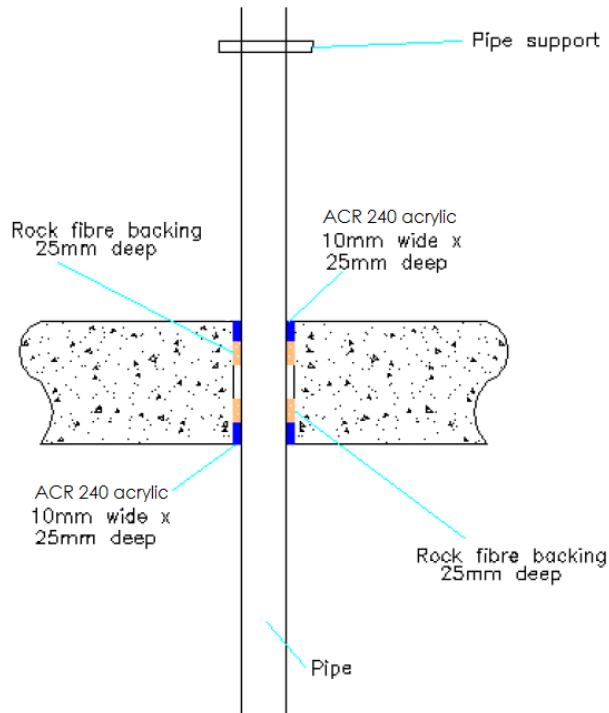
\*See below graphs for interpolated pipe sizes



#### A.4.4 Double side penetration seal with pipes

**Penetration Seal:** Pipes fitted at any position within the aperture, with ACR 240 to the both faces of the floor, backed with 25 mm stone wool 33kg/m<sup>3</sup>. Minimum annular space 10 mm (A1) and minimum separation between penetration seals 30 mm (A2), maximum seal size 300 x 300 mm / 300 mm diameter.

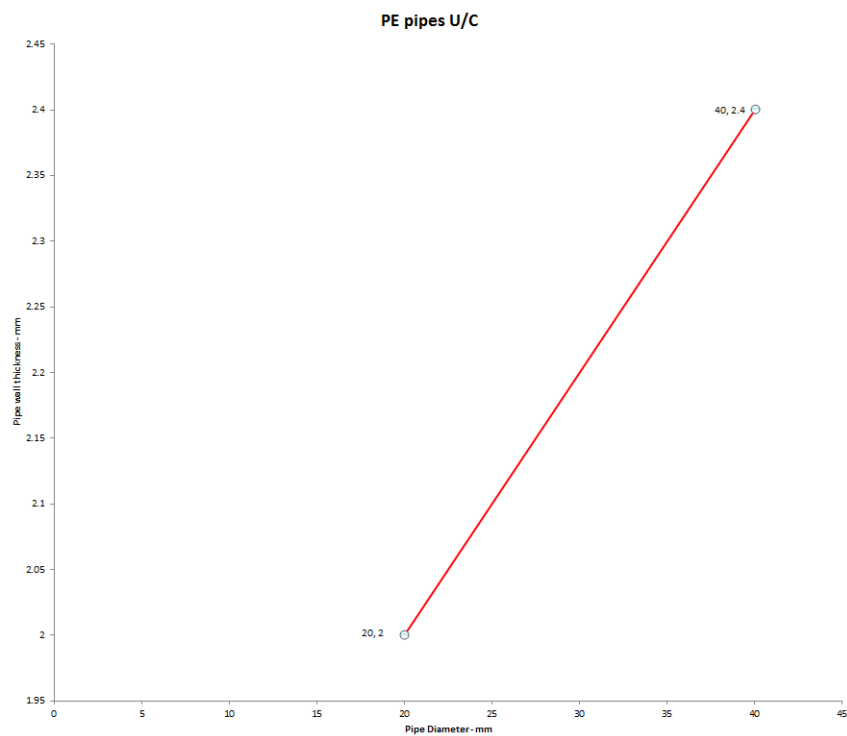
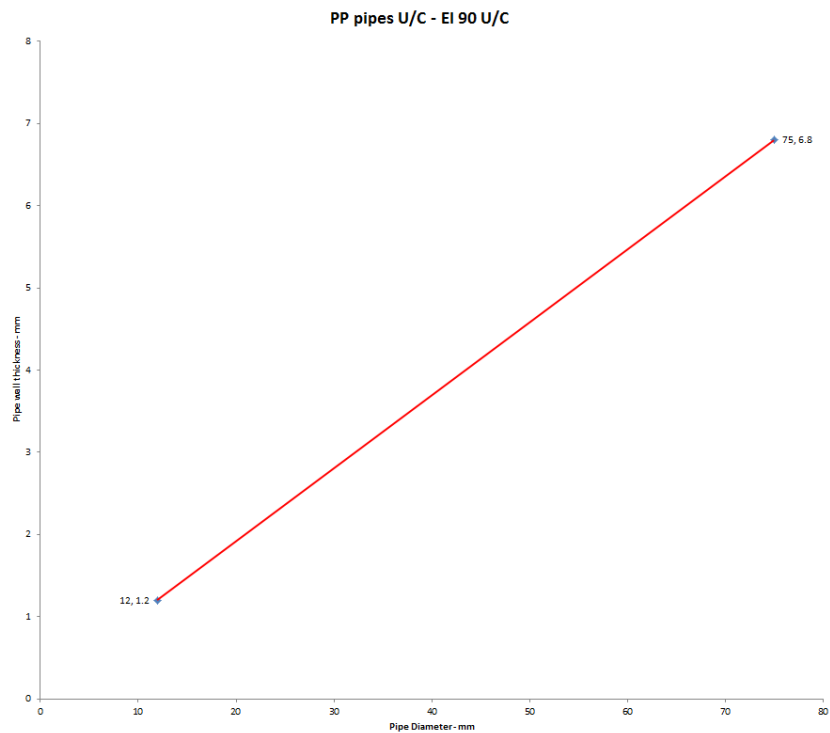
Construction details:



##### A.4.4.1

Services	Sealant depth	Backing	Classification
PVC-U pipe according to EN 1329-1, EN 1452-1 and EN 1453-1, PVC-C according to EN 1566-1			
Up to 50 mm Ø/1.6-3.7 mm wall	25 mm	25 mm Stone wool	EI 240 U/C
Up to 40 mm Ø/1.6-3.7 mm wall, with bundle of cables up to 21 mm diameter			
PP pipe according to EN 1451-1			
12 mm Ø/1.2 mm wall	25 mm	25 mm Stone wool	EI 240 U/C
13-75 mm Ø/1.2-6.8 mm wall*			EI 90 U/C
Up to 40 mm Ø/1.2-1.8 mm wall, with bundle of cables up to 21 mm diameter			EI 180 U/C
PE pipe according to EN 1519-1, EN 12201-2 and EN 12666-1, ABS according to EN 1455-1 and pipes made from SAN+PVC according to EN 1565-1			
20-40 mm Ø/2.0-2.4 mm wall*	25 mm	25 mm Stone wool	EI 240 U/C
Up to 40 mm Ø/2.0-2.4 mm wall, with bundle of cables up to 21 mm diameter			EI 180 U/C

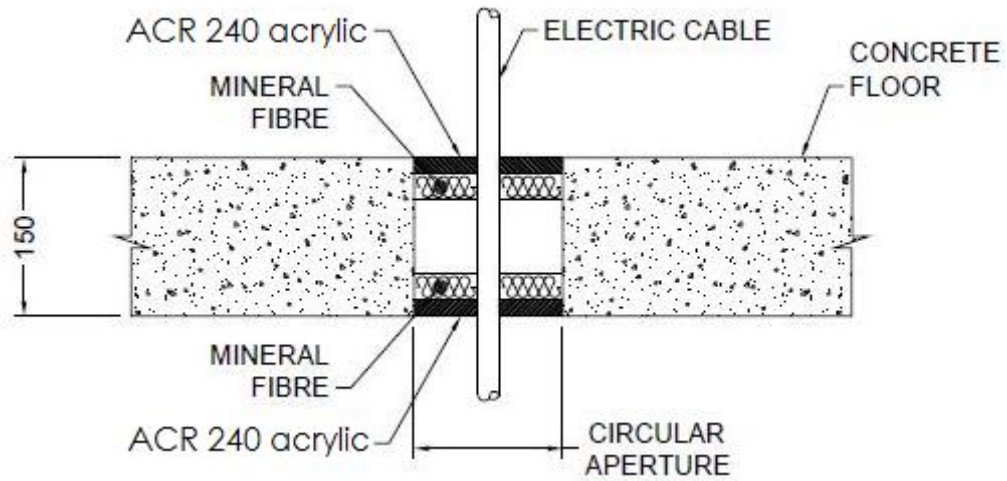
\*See below graphs for interpolated pipe sizes



#### A.4.5 Double side penetration seal with cables

**Penetration Seal:** Cables fitted circular apertures or min. 7 mm from the edges of rectilinear apertures, with ACR 240 to both sides of the floor, backed with stone wool insulation 35kg/m<sup>3</sup>.

Construction details:



##### A.4.5.1

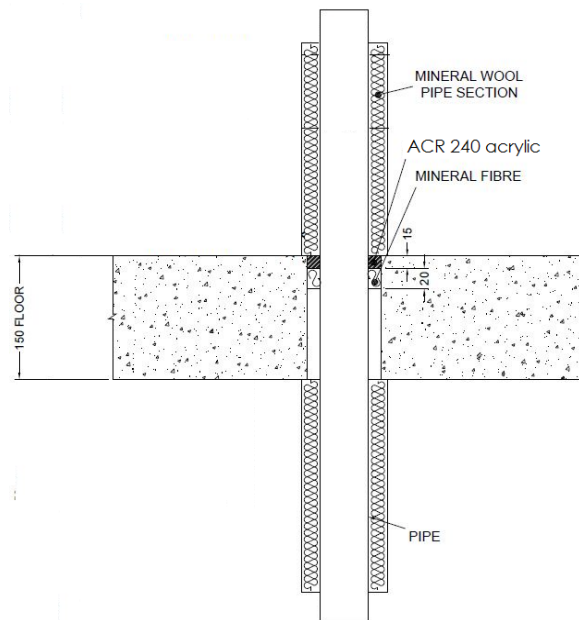
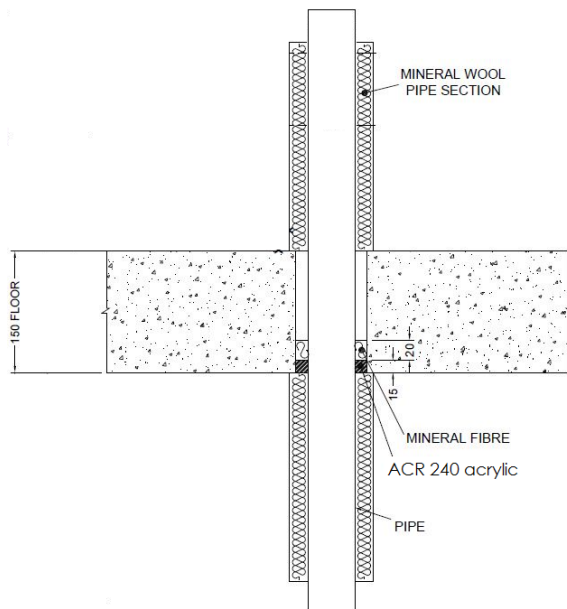
Services	Sealant depth	Backing	Maximum Aperture	Classification
Blank seals	15 mm	25 mm Stone wool 35 kg/m <sup>3</sup>	300 x 300 mm	EI 240
Electric cables up to 21 mm diameter, single or in a bundle.				EI 120
Electric cables 22-50 mm diameter, single or in a bundle.				E 120 EI 90
Electric cables 51-80 mm diameter, single or in a bundle.				E 120 EI 60



#### A.4.6 Single side penetration seal with metallic pipes

**Penetration Seal:** 1000 mm (min.) LI (Local Interrupted) or CI (Continuous Interrupted) insulated metallic pipes (single) fitted at any position within the aperture, with 15 or 25 mm deep ACR 240 to either side of the floor (or at any position between), backed with 40 kg/m<sup>3</sup> stone wool insulation or Würth FP Backing.

Construction details:



##### A.4.6.1

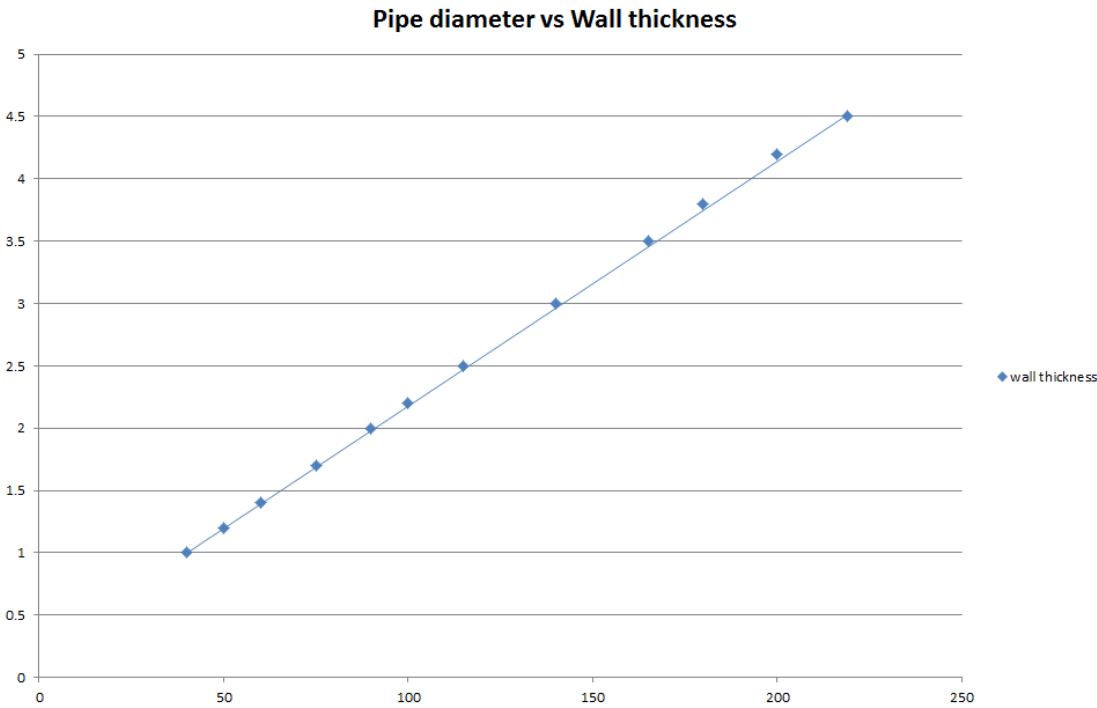
Services	Max. seal size	Insulation (min)	Sealant depth	Classification
Copper pipe up to 54 mm diameter/0.9-14.2 mm wall	10 mm width around pipe	20 mm Stone wool insulation 80 kg/m³	15 mm	E 240 C/U, EI 180 C/U
Copper pipe up to 12 mm diameter/0.9-5 mm wall				EI 240 C/U
Copper pipe up to 54 mm diameter/0.9-14.2 mm wall	Up to 100 x 1000 mm		25 mm	EI 120 C/U
Copper pipe up to 54 mm diameter/0.9-14.2 mm wall	300 x 300 mm	20 mm Stone wool insulation 80 kg/m³	15 mm	E 90 C/U, EI 60 C/U
Copper pipe up to 12 mm diameter/0.9-5 mm wall				
Copper pipe up to 54 mm diameter/0.9-14.2 mm wall			25 mm	EI 120 C/U

Services	Max. Seal Size	Insulation (min)	Sealant Depth	Classification
Mild or stainless steel pipe				
40 mm diameter/1-14.2 mm wall	10 mm width around pipe	20 mm Stone wool insulation 80 kg/m³	15 mm	EI 240 C/U
40 mm diameter/1-14.2 mm wall*		30 mm Stone wool insulation 80 kg/m³		E 240, EI 90 C/U
50 mm diameter/1.2-14.2 mm wall*				
60 mm diameter/1.4-14.2 mm wall*				
75 mm diameter/1.7-14.2 mm wall*				
90 mm diameter/2-14.2 mm wall*				
100 mm diameter/2.2-14.2 mm wall*				
115 mm diameter/2.5-14.2 mm wall*				
140 mm diameter/3-14.2 mm wall*				
165 mm diameter/3.5-14.2 mm wall*				
180 mm diameter/3.8-14.2 mm wall*				
200 mm diameter/4.2-14.2 mm wall*				
219 mm diameter/4.5-14.2 mm wall*				
40 mm diameter/1-14.2 mm wall*	Up to 100 x 1000 mm	20 mm Stone wool insulation 80 kg/m³	25 mm	E120, EI 90 C/U
50 mm diameter/1.2-14.2 mm wall*		30 mm Stone wool insulation 80 kg/m³		
60 mm diameter/1.4-14.2 mm wall*				
75 mm diameter/1.7-14.2 mm wall*				
90 mm diameter/2-14.2 mm wall*				
100 mm diameter/2.2-14.2 mm wall*				
115 mm diameter/2.5-14.2 mm wall*				
140 mm diameter/3-14.2 mm wall*				
165 mm diameter/3.5-14.2 mm wall*				
180 mm diameter/3.8-14.2 mm wall*				
200 mm diameter/4.2-14.2 mm wall*				
219 mm diameter/4.5-14.2 mm wall*				

\* Typical pipe diameters shown, see below graph for intermediate sizes

Services	Max. Seal Size	Insulation (minimum)	Sealant Depth	Classification
Mild or stainless steel pipe				
40 mm diameter/1-14.2 mm wall	300 x 300 mm	20 mm Stone wool insulation 80 kg/m³	15 mm	E 90 C/U, EI 60 C/U
40 mm diameter/1-14.2 mm wall*		30 mm Stone wool insulation 80 kg/m³		
50 mm diameter/1.2-14.2 mm wall*				
60 mm diameter/1.4-14.2 mm wall*				
75 mm diameter/1.7-14.2 mm wall*				
90 mm diameter/2-14.2 mm wall*				
100 mm diameter/2.2-14.2 mm wall*				
115 mm diameter/2.5-14.2 mm wall*				
140 mm diameter/3-14.2 mm wall*				
165 mm diameter/3.5-14.2 mm wall*				
180 mm diameter/3.8-14.2 mm wall*				
200 mm diameter/4.2-14.2 mm wall*				
219 mm diameter/4.5-14.2 mm wall*				
40 mm diameter/1-14.2 mm wall*		20 mm Stone wool insulation 80 kg/m³	25 mm	E120, EI 90 C/U
50 mm diameter/1.2-14.2 mm wall*		30 mm Stone wool insulation 80 kg/m³		
60 mm diameter/1.4-14.2 mm wall*				
75 mm diameter/1.7-14.2 mm wall*				
90 mm diameter/2-14.2 mm wall*				
100 mm diameter/2.2-14.2 mm wall*				
115 mm diameter/2.5-14.2 mm wall*				
140 mm diameter/3-14.2 mm wall*				
165 mm diameter/3.5-14.2 mm wall*				
180 mm diameter/3.8-14.2 mm wall*				
200 mm diameter/4.2-14.2 mm wall*				
219 mm diameter/4.5-14.2 mm wall*				

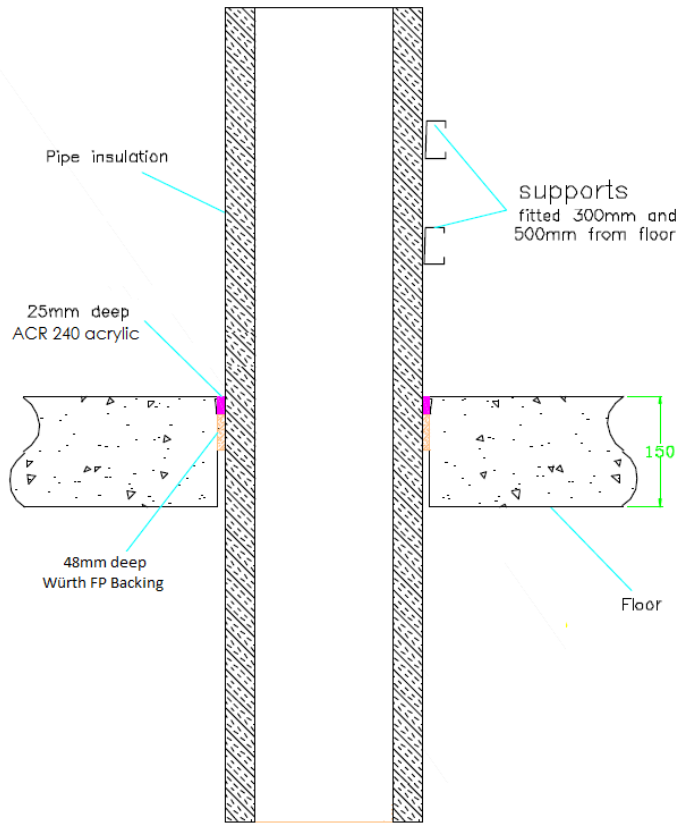
\* Typical pipe diameters shown, see below graph for intermediate sizes



**A.4.7 Single side penetration seal with metallic pipes**

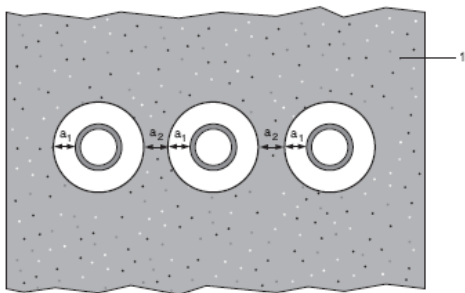
**Penetration Seal:** CS (Continuous Sustained) insulated metallic pipes (single) fitted at any position within the aperture, with 25 mm ACR 240 to the top of the floor, backed with 48 mm deep Würth FP Backing insulation. Minimum annular space 10 mm (A1) and minimum separation between penetration seals 30 mm (A2). Maximum seal size 300 x 300 mm / 504 mm Ø

Construction details:



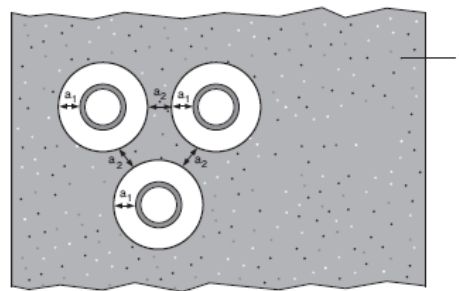
**Configuration 1**

*Option 1*



**Configuration 2**

*Option 2*



**Key**

1 Supporting construction

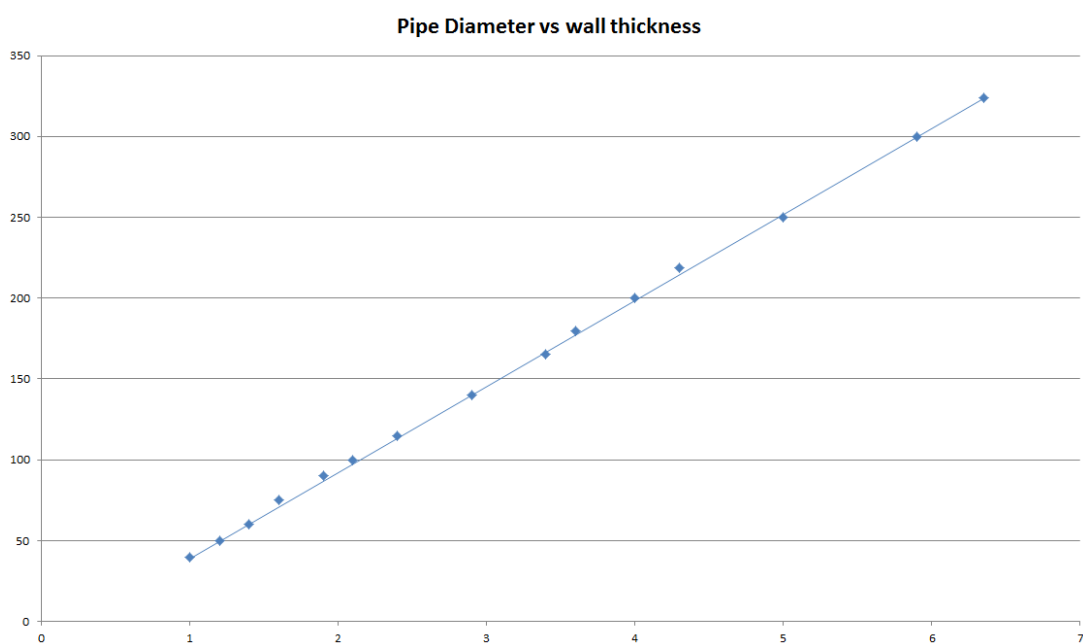
a1 Pipe / top edge of seal separation

a2 Pipe / side edge of seal separation

a3 Pipe / pipe separation

**A.4.7.1 Single side penetration seal with pipes**

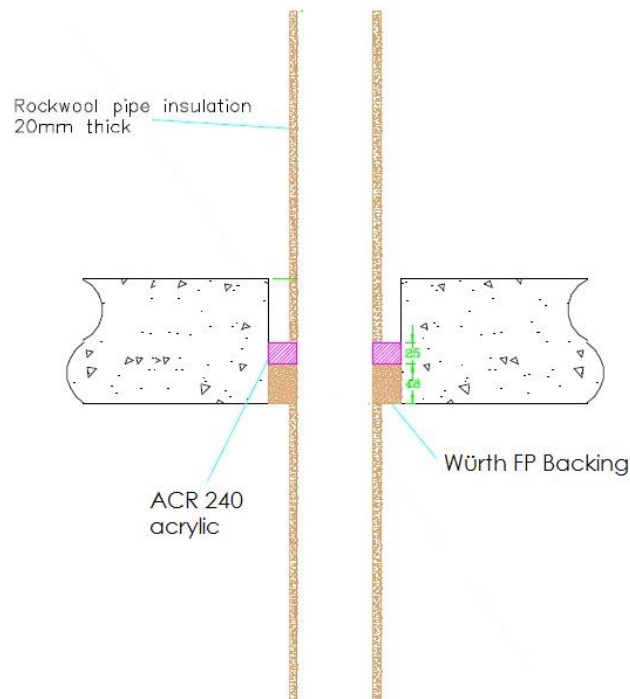
Mild or stainless steel pipe	Insulation	Classification
40 mm diameter/1-14.2 mm wall	20 mm thick stone, mineral wool min. 80 kg/m³	EI 240 C/U
40 mm diameter/1-14.2 mm wall*	30-80 mm thick stone, mineral wool min. 80 kg/m³	
50 mm diameter/1.2-14.2 mm wall*		
60 mm diameter/1.4-14.2 mm wall*		
75 mm diameter/1.6-14.2 mm wall*		
90 mm diameter/1.9-14.2 mm wall*		
100 mm diameter/2.1-14.2 mm wall*		
115 mm diameter/2.4-14.2 mm wall*		
140 mm diameter/2.9-14.2 mm wall*		
165 mm diameter/ 3.4-14.2 mm wall*		
180 mm diameter/ 3.6-14.2 mm wall*		
200 mm diameter/ 4.0-14.2 mm wall*		
219 mm diameter/ 4.3-14.2 mm wall*		
250 mm diameter/ 5.0-14.2 mm wall*		
300 mm diameter/ 5.9-14.2 mm wall*		
324 mm diameter/ 6.35-14.2 mm wall*		
PEX pipe in pipe system	Insulation	Classification
15 mm diameter x 2.5 mm wall inner /25mm diameter outer	None	EI 90 C/C



#### A.4.8 Single side penetration seal with composite pipes

**Penetration Seal:** CI (Continuous Interrupted) insulated composite pipes (single) fitted at any position within the aperture, with ACR 240, minimum 10 mm seal width around service and maximum 300 x 300 mm seal, backed with 'Würth FP Backing'.

Construction details:



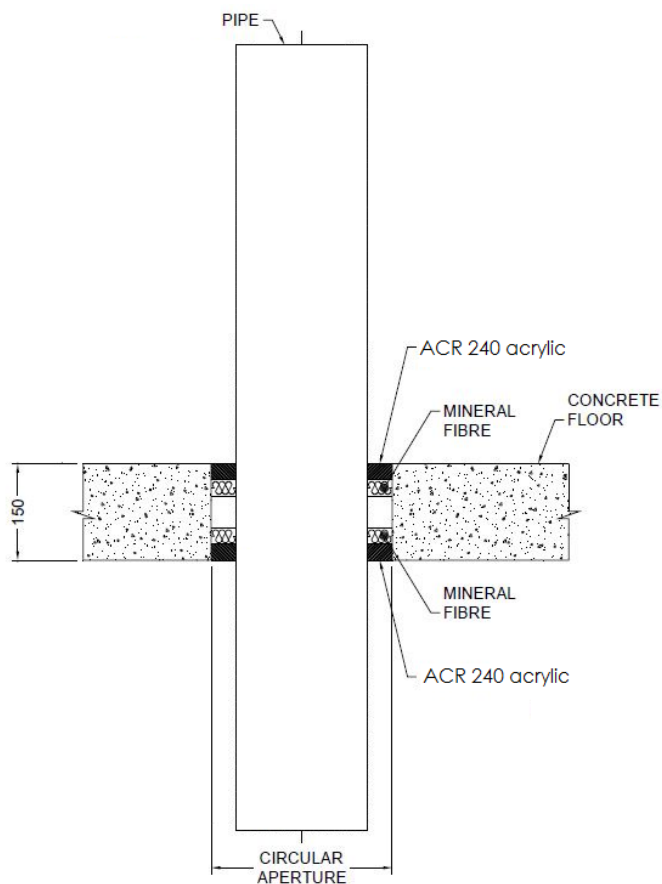
##### A.4.8.1

Services	Sealant depth	Backing	Insulation (minimums)	Classification
Alupex Composite Pipe				
16 mm diameter/2.25 mm wall	25 mm	48 mm Würth FP Backing	20 mm stonewool 80 kg/m <sup>3</sup> , 500 mm length from both sides of the seal	<b>EI 240 C/C</b>
20 mm diameter/2.5 mm wall				
26 mm diameter/3 mm wall				
32 mm diameter/3 mm wall				
40 mm diameter/3.5 mm wall				
50 mm diameter/4 mm wall				
63 mm diameter/4.5 mm wall				
75 mm diameter/4.7 mm wall				

**A.4.9 Double side penetration seal with metallic pipes**

**Penetration Seal:** Non-insulated metallic pipes (single) fitted at any position within the aperture, with 25 mm deep ACR 240 to both sides of the floor, backed with 25 mm deep 140 kg/m<sup>3</sup> stone wool insulation.

Construction details:

**A.4.9.1**

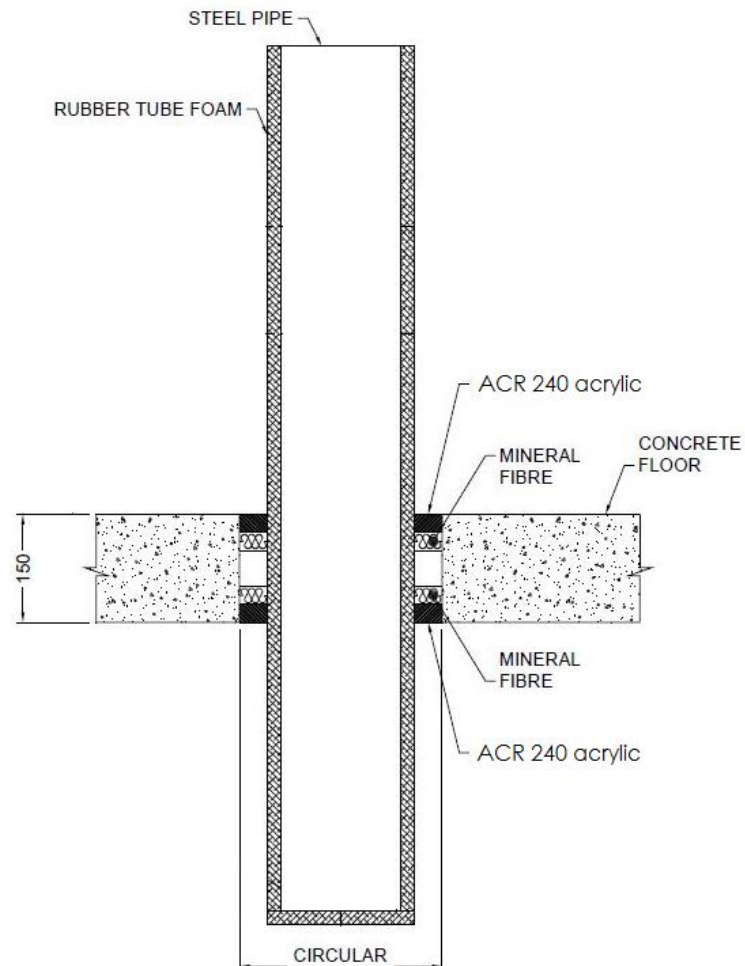
Services	Max. Seal Size	Insulation	Backing	Classification
Copper pipe 54 mm diameter/2-14.2 mm wall	300 x 300 mm	None	25 mm deep 140 kg/m <sup>3</sup> stone wool	E 120 C/U, EI 20 C/U
Mild steel pipe 16 mm diameter/1.5-7.5 mm wall				EI 240 C/U
Mild steel pipe 16 mm diameter/1.5-7.5 mm wall	Up to 100 x 1000 mm		Würth FP Backing 25 mm deep	EI 120 C/U



#### A.4.10 Double side penetration seal with metallic pipes

**Penetration Seal:** CS (Continuous Sustained) insulated metallic pipes (single) fitted at any position within the aperture, with ACR 240 to both sides of the wall, maximum 300 x 300 mm seal width around service, backed with stone wool insulation or 'Würth FP Backing'.

Construction details:

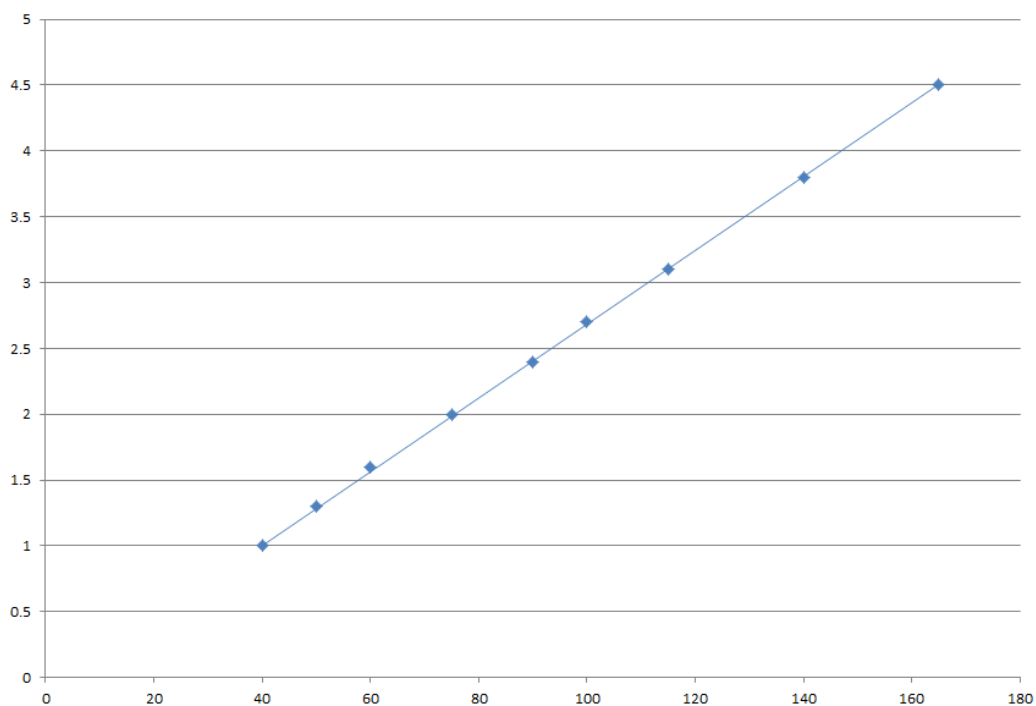


**A.4.10.1**

Services	Sealant depth	Backing	Insulation	Classification
Mild or stainless steel pipe				
40 mm diameter/1-14.2 mm wall	25 mm	20 mm Stone wool 40 kg/m³	13 -19 mm Elastomeric insulation minimum class B-s3,d0	EI 180
40 mm diameter/1-14.2 mm wall*	25 mm	25 mm Würth FP Backing		EI 60
50 mm diameter/1.3-14.2 mm wall*				
60 mm diameter/1.6-14.2 mm wall*				
75 mm diameter/2-14.2 mm wall*				
90 mm diameter/2.4-14.2 mm wall*				
100 mm diameter/2.7-14.2 mm wall*				
115 mm diameter/3.1-14.2 mm wall*				
140 mm diameter/3.8-14.2 mm wall*				
165 mm diameter/ 4.5-14.2 mm wall*				

\* Typical pipe diameters shown, see below graph for intermediate sizes

**Pipe diameter vs Wall thickness**

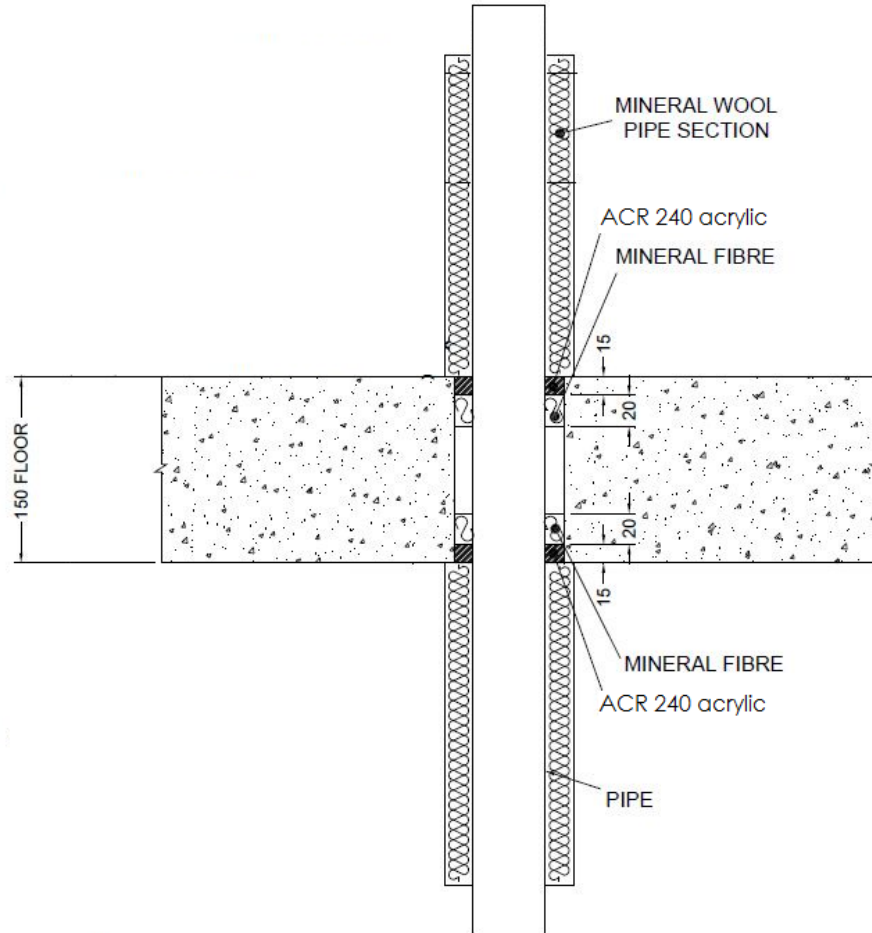


Services	Sealant depth	Backing	Insulation	Classification
Copper pipe				
12 mm diameter/1 mm wall	25 mm	25 mm Würth FP Backing	9 mm Elastomeric insulation minimum class B-s3,d0	E 240 C/C, EI 180 C/C
12-54 mm diameter/1-1.2 mm wall			9-13 mm Elastomeric insulation minimum class B-s3,d0	E 180, EI 120 C/C
12-54 mm diameter/1-1.2 mm wall			13-25 mm Elastomeric insulation minimum class B-s3,d0	E 90 C/C, EI 60 C/C
Alupex Composite Pipe				
16 mm diameter/2.25 mm wall	25 mm	25 mm Würth FP Backing	9 mm Elastomeric insulation minimum class B-s3,d0	EI 180 C/C
16 mm diameter/2.25 mm wall			9-13 mm Elastomeric insulation minimum class B-s3,d0	E 120 C/C, EI 60 C/C
20 mm diameter/2.5 mm wall				
26 mm diameter/3 mm wall				
32 mm diameter/3 mm wall				
40 mm diameter/3.5 mm wall				
50 mm diameter/4 mm wall				
63 mm diameter/4.5 mm wall				
75 mm diameter/4.7 mm wall				
16 mm diameter/2.25 mm wall			13-25 mm Elastomeric insulation minimum class B-s3,d0	EI 60 C/C
20 mm diameter/2.5 mm wall				
26 mm diameter/3 mm wall				
32 mm diameter/3 mm wall				
40 mm diameter/3.5 mm wall				
50 mm diameter/4 mm wall				
63 mm diameter/4.5 mm wall				
75 mm diameter/4.7 mm wall				

#### A.4.11 Double side penetration seal with metallic pipes

**Penetration Seal:** 1000 mm (min.) LI (Local Interrupted) or CI (Continuous Interrupted) insulated metallic pipes (single) fitted at any position within the aperture, with 15 mm deep ACR 240 to both sides of the floor (or at any position between), backed with 20 or 30 mm deep 40 kg/m<sup>3</sup> stone wool insulation\*.

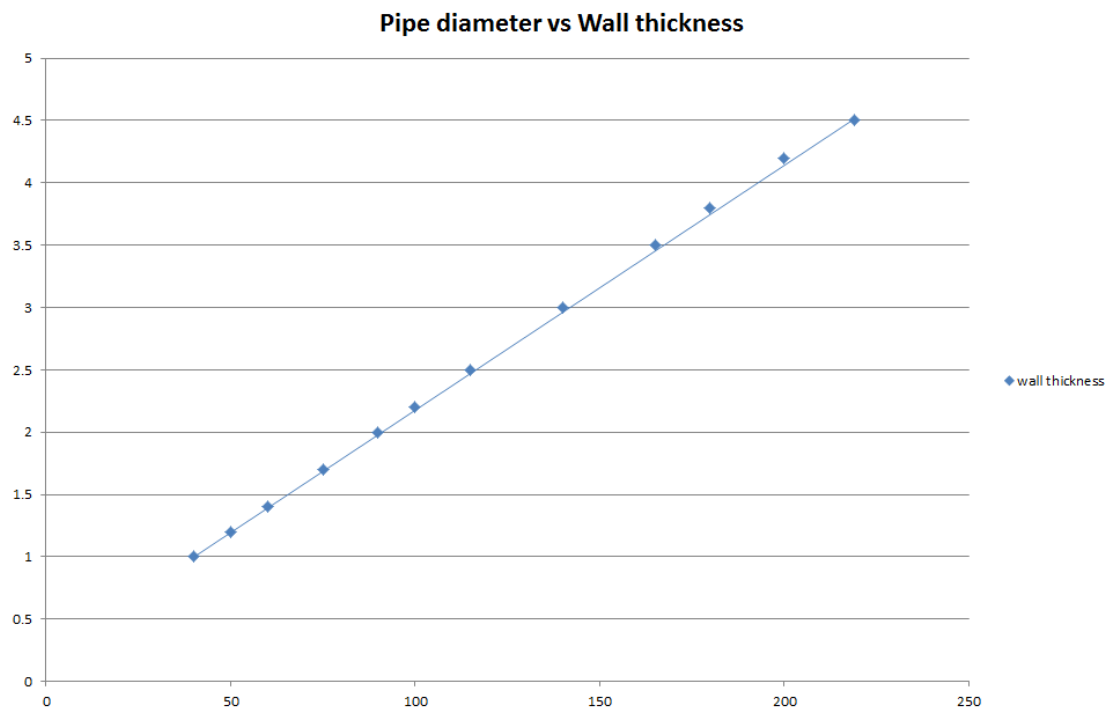
Construction details:



**A.4.11.1**

Services	Maximum seal size	Insulation (minimum)	Classification
Mild or stainless steel pipe			
40 mm diameter/1-14.2 mm wall	300 x 300 mm or 100 x 1000 mm	20 mm Stone wool insulation 80 kg/m <sup>3</sup>	EI 240 C/U
40 mm diameter/1-14.2 mm wall*		30 mm Stone wool insulation 80 kg/m <sup>3</sup>	E 240, EI 120 C/U
50 mm diameter/1.2-14.2 mm wall*			
60 mm diameter/1.4-14.2 mm wall*			
75 mm diameter/1.7-14.2 mm wall*			
90 mm diameter/2-14.2 mm wall*			
100 mm diameter/2.2-14.2 mm wall*			
115 mm diameter/2.5-14.2 mm wall*			
140 mm diameter/3-14.2 mm wall*			
165 mm diameter/3.5-14.2 mm wall*			
180 mm diameter/3.8-14.2 mm wall*			
200 mm diameter/4.2-14.2 mm wall*			
219 mm diameter/4.5-14.2 mm wall*			

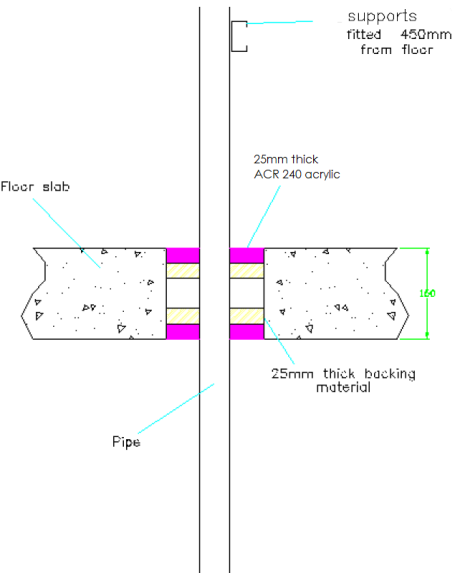
\* Typical pipe diameters shown, see below graph for intermediate sizes



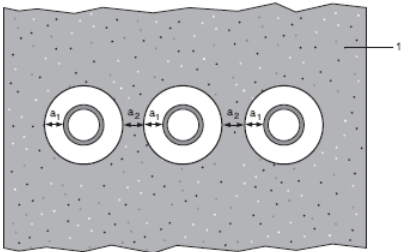
**A.4.12 Double side penetration seal with plastic pipes**

**Penetration Seal:** Combustible pipes sealed with ACR 240, to both sides of the floor backed with Stonewool (35kg/m<sup>3</sup> density), 25 mm deep. Minimum separation between penetration seals of 30 mm (a<sub>2</sub>) and seal size/annular space of 10-30 mm (a<sub>1</sub>).

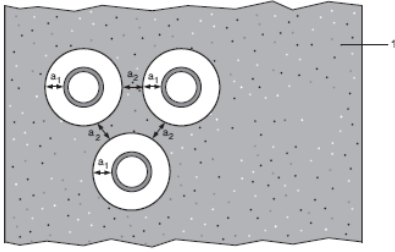
Construction details:



**Configuration 1**



**Configuration 2**



**Key**

1 Supporting construction

a<sub>1</sub> Pipe / edge of seal separation (annular space)

a<sub>2</sub> Separation between penetration seals

**A.4.12.1**

Services	Sealant depth	Backing	Classification
PP pipe according to EN 1451-1	25 mm	25 mm Würth FP Backing	<b>EI 120 U/C, EI 120 C/C</b>
40 mm Ø/3 mm wall			
75 mm Ø/2.8 mm wall		25 mm stone wool 140 kg/m <sup>3</sup>	<b>EI 180 U/C, EI 180 C/C</b>
PE (PE-HD) pipe according to EN 1519-1, EN 12201-2 and EN 12666-1, ABS according to EN 1455-1 and pipes made from SAN+PVC according to EN 1565-1 40 mm Ø/4 mm wall			<b>EI 240 U/C, EI 240 C/C</b>