



ETA-Danmark A/S  
Göteborg Plads 1  
DK-2150 Nordhavn  
Tel. +45 72 24 59 00  
Internet [www.etadanmark.dk](http://www.etadanmark.dk)

Authorised and notified  
according to Article 29 of the  
Regulation (EU)  
No 305/2011 of the European  
Parliament and of the Council  
of 9 March 2011



## European Technical Assessment ETA-21/0181 of 2021/04/23

### I General Part

**Technical Assessment Body issuing the ETA and designated according to Article 29 of the Regulation (EU) No 305/2011: ETA-Danmark A/S**

**Trade name of the construction product:**

Sealfire W150

**Product family to which the above construction product belongs:**

Fire Stopping and Sealing Product:  
• Penetration Seals

**Manufacturer:**

Würth Oy  
Würthantie 1  
11710 Riihimäki  
Finland

**Manufacturing plant:**

A/001

**This European Technical Assessment contains:**

26 pages including 2 annexes which form an integral part of the document

**This European Technical Assessment is issued in accordance with Regulation (EU) No 305/2011, on the basis of:**

EAD 350454-00-1104, September 2017

**This version replaces:**

-

Translations of this European Technical Assessment in other languages shall fully correspond to the original issued document and should be identified as such.

Communication of this European Technical Assessment, including transmission by electronic means, shall be in full. However, partial reproduction may be made, with the written consent of the issuing Technical Assessment Body. Any partial reproduction has to be identified as such.

## **Table of Contents**

<b>I.</b>	<b>SPECIFIC PARTS OF THE EUROPEAN TECHNICAL ASSESSMENT .....</b>	<b>4</b>
1	Technical description of the product .....	4
2	Specification of the intended uses of the product in accordance with the applicable European Assessment Document (Hereinafter EAD): EAD 350454-00-1104 .....	5
3	Performance of the product and references to the methods used for its assessment .....	6
4	ASSESSMENT AND VERIFICATION OF CONSTANCY OF PERFORMANCE (HEREINAFTER AVCP) SYSTEM APPLIED, WITH REFERENCE TO ITS LEGAL BASE .....	7
5	Technical details necessary for the implementation of the AVCP system, as provided for in the applicable EAD .....	7
	<b>ANNEX A – Resistance to Fire Classification – Sealfire W150 .....</b>	<b>8</b>
B.1	Rigid floor constructions according to 1.2.1 with thickness of minimum 150 mm .....	8
A.1.1	Penetration seal with plastic pipe .....	8
A.1.2	Penetration seal with metal pipe including continued interrupted (CI) or minimum 500 mm long local interrupted (LI) combustible insulation .....	10
A.1.3	Sealfire W150 penetration seal with non-insulated metal pipes in rigid floors min. 150 mm thick .....	11
A.1.4	Penetration seal with metal pipe including continued sustained (CS) combustible insulation .....	12
A.1.5	Penetration seal with cables .....	13
B.2	Rigid wall constructions according to 1.2.1 with wall thickness of minimum 150 mm .....	14
A.2.1	Penetration seal with plastic pipe .....	14
A.2.2	Penetration seal with metal pipe including continued interrupted (CI) or minimum 500 mm long local interrupted (LI) combustible insulation .....	16
A.2.3	Penetration seal with metal pipe including continued sustained (CS) combustible insulation .....	17
A.2.4	Sealfire W150 penetration seal with non-insulated metal pipes in rigid walls min. 150 mm thick .....	18
A.2.5	Penetration seal with plastic pipe .....	19
B.3	Flexible or rigid wall constructions according to 1.2.1 with wall thickness of minimum 100 mm .....	20
A.3.1	Penetration seal with plastic pipe .....	20
A.3.2	Penetration seal with plastic pipe .....	21
A.3.3	Penetration seal with metal pipe including continued sustained (CS) combustible insulation .....	22
B.4	Flexible wall constructions according to 1.2.1 with wall thickness of minimum 130 mm .....	23
A.4.1	Penetration seal with metal pipe including continued sustained (CS) combustible insulation .....	23
	<b>ANNEX B – Airborne Sound Insulation Classification – Sealfire W150 .....</b>	<b>24</b>
B.5	Sealfire W150, 50mm wide x 25mm thick (no backing material), in the following configuration .....	24
B.6	Sealfire W150, 50mm wide x 25mm thick (no backing material). Plaster board fixed to exposed cassette, in the following configuration .....	25
B.7	Sealfire W150, 20mm wide x 30mm thick sealant (both sides) with 40mm stone mineral wool backing, in the following configuration .....	26

**I. SPECIFIC PARTS OF THE EUROPEAN TECHNICAL ASSESSMENT**

**1 Technical description of the product**

- 1) Sealfire W150 is a fire resistant, intumescent sealant used to form a penetration seal around metallic pipes, plastic pipes and electrical cables to reinstate the fire resistance performance of wall and floor constructions, where they have been provided with apertures for the penetration of services.
- 2) The Sealfire W150 is supplied in liquid form contained within 310 ml cartridges and 600 ml foils. The sealant is gunned into the aperture in the separating element/ elements, around the service or services, to a specified depth utilizing, where applicable, stone wool as a backing material.
- 3) The applicant has presented a declaration that the product and/or constituents of the product contains no substances which have been classified as dangerous according to Directive 67/548/EEC and Regulation (EC) No. 1272/2008 and listed in the 'indicative list on dangerous substances' of the EGDS – taking into account the installation conditions of the construction product and the release scenarios resulting from there.

In addition to the specific clauses relating to dangerous substances contained in this European Technical Assessment, there may be other requirements applicable to the products falling within its scope (e.g. transposed European legislation and national laws, regulations and administrative provisions). In order to meet the provisions of the Construction Products Regulation, these requirements need also to be complied with, when and where they apply.

- 4) The use category of Sealfire W150 in relation to BWR 3 (Health, hygiene and environment) is IA1, S/W3.

**2 Specification of the intended uses of the product in accordance with the applicable European Assessment Document (Hereinafter EAD): EAD 350454-00-1104**

Detailed information and data is given in Annex A.

- 1) The intended use of Sealfire W150 is to reinstate the fire resistance performance of flexible wall constructions, rigid wall constructions and rigid floor constructions where they are penetrated by various metal pipe services with combustible insulation, plastic pipes and electrical cables.
- 2) The specific elements of construction that the system Sealfire W150 may be used to provide a penetration seal in, are as follows:

Flexible walls:	The wall must have a minimum thickness of 100 mm and comprise steel studs or timber studs* lined on both faces with minimum 2 layers of 12.5 mm thick boards.
Rigid walls:	The wall must have a minimum thickness of 100 mm and comprise concrete, aerated concrete or masonry, with a minimum density of 650 kg/m <sup>3</sup> .
Rigid floors:	The floor must have a minimum thickness of 150 mm and comprise aerated concrete or concrete with a minimum density of 650 kg/m <sup>3</sup> .

The supporting construction must be classified in accordance with EN 13501-2 for the required fire resistance period.

- 3) The Sealfire W150 may be used to provide a penetration seal with specific single insulated metal pipes, plastic pipes and with specific electrical cables, single or in a bundle (for details see Annex A).
- 4) Apertures in the separating element shall be maximum 339 mm diameter. The annular space/gap around the services shall, where required, be infilled with stone wool insulation backing material and Sealfire W150 sealant applied to both faces or Sealfire W150 is applied to a full depth of 100 mm. Blank seals (without services) are not permitted. For full details, see Annex A.
- 5) Pipes shall be supported at maximum 300 mm away from both faces of the wall constructions and from the upper face of floor constructions.
- 6) The provisions made in this European Technical Assessment are based on an assumed working life of the Sealfire W150 of 10 years, provided that the conditions laid down in sections manufacturer's instructions and datasheet for the packaging/transport/ storage/installation/use/ repair are met. The indications given on the working life cannot be interpreted as a guarantee given by the producer or the Technical Assessment Body but are to be regarded only as a means for choosing the right products in relation to the expected economically reasonable working life of the works.
- 7) Type Y<sub>2</sub> (-5°/70°C): Intended for use at internal or external sheltered conditions with high or other humidity classes, including temperatures below 0°C but without exposure to rain or UV. Includes classes Z<sub>1</sub> & Z<sub>2</sub>

**3 Performance of the product and references to the methods used for its assessment**

Product-type: Sealant		Intended use: Penetration Seal	
	Essential characteristic	Product Performance	
BWR 2 Safety in case of fire			
	Reaction to fire	Class E	
	Resistance to fire	Annex A	
BWR 3 Hygiene, health and environment			
	Air permeability	No performance assessed	
	Water permeability	No performance assessed	
	Content, emission and/or release of dangerous substances	Use categories: IA1, S/W3 Declaration of manufacturer	
BWR 4 Safety in use			
	Mechanical resistance and stability	No performance assessed	
	Resistance to impact/movement	No performance assessed	
	Adhesion	No performance assessed	
	Durability	Y <sub>2</sub> (-5°/70°C)	
BWR 5 Protection against noise			
	Airborne sound insulation	Annex B	
BWR 6 Energy economy and heat retention			
	Thermal properties	No performance assessed	
	Water vapour permeability	No performance assessed	

**4 ASSESSMENT AND VERIFICATION OF CONSTANCY OF PERFORMANCE (HEREINAFTER AVCP) SYSTEM APPLIED, WITH REFERENCE TO ITS LEGAL BASE**

According to the decision 1999/454/EC – Commission Decision of date 22nd June 1999 on the procedure for attesting the conformity of construction products pursuant to Article 20(2) of Council Directive 89/106/EEC as regards fire stopping, fire sealing and fire protective products, published in the Official Journal of the European Union (OJEU) L178/52 of 14/07/1999, see <http://eur-lex.europa.eu/JOIndex.do> of the European Commission<sup>1</sup>, as amended, the system(s) of assessment and verification of constancy of performance (see Annex V to Regulation (EU) No 305/2011) given in the following table(s) applies (apply).

Product(s)	Intended use(s)	Level(s) or class(es)	System(s)
Fire stopping and Fire Sealing Products	For fire compartmentation and/or fire protection or fire performance	Any	1

**5 Technical details necessary for the implementation of the AVCP system, as provided for in the applicable EAD**

Technical details necessary for the implementation of the AVCP system are laid down in the control plan deposited at ETA-Danmark A/S prior to CE marking

Issued in Copenhagen on 2021-04-23 by



Thomas Bruun

Managing Director, ETA-Danmark

<sup>1</sup> Official Journal of the European Communities L178/52 of 14/7/1999

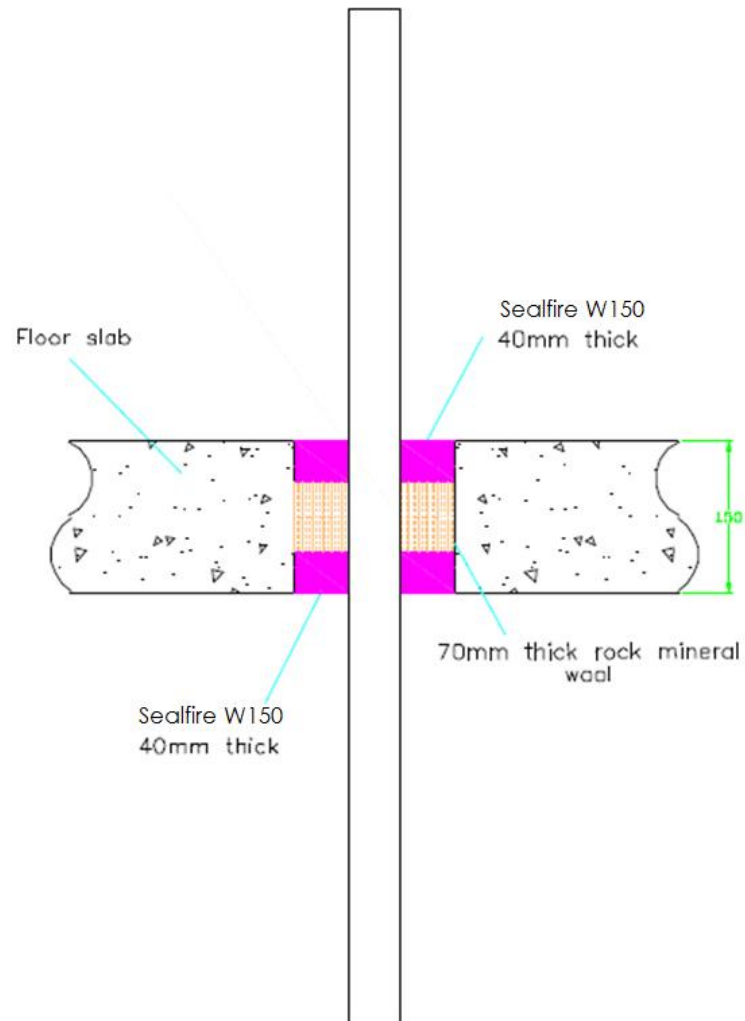
## ANNEX A – Resistance to Fire Classification – Sealfire W150

### B.1 Rigid floor constructions according to 1.2.1 with thickness of minimum 150 mm

#### A.1.1 Penetration seal with plastic pipe

**Penetration Seal:** Combustible pipes fitted centrally with a single 40 mm deep Sealfire W150 to both sides of the floor backed to full depth with Stone wool insulation 90kg/m<sup>3</sup>.

Construction details:





**A.1.1.1**

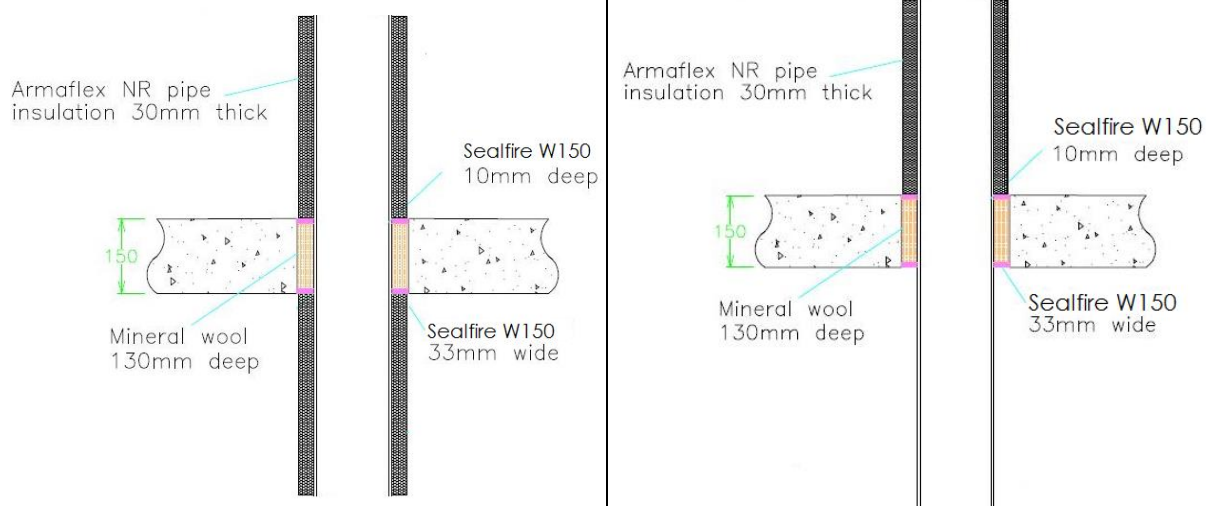
<b>Services</b>	<b>Aperture diameter (mm)</b>	<b>Classification</b>
PVC-U pipe according to EN 1329-1, EN 1452-2 and EN 1453-1		
Diameter 20 mm, wall thickness 1.5mm	35	<b>EI 120-U/U, EI 120-C/U, EI 120-U/C, EI 120-C/C</b>
PE pipe according to EN 1519-1, EN 12201-2 and EN 12666-1 ABS pipe according to EN 1455-1 and SAN+PVC pipe according to EN 1565-1		
Diameter 75 mm, wall thickness 3 mm	125	<b>E 60-C/U, E 60-U/C, E 60-C/C EI 45-C/U, EI 45-U/C, EI 45-C/C</b>
MLCP <sup>#</sup> pipe according to EN 21003-1 and EN 21003-2		
Diameter 16 mm, wall thickness 2.4 mm	36	<b>E 240-C/U, E 240-U/C, E 240-C/C EI 90-C/U, EI 90-U/C, EI 90-C/C</b>
Diameter 20 mm, wall thickness 2.5mm	35	<b>E 120-U/U, E 120-C/U, E 120-U/C, E 120-C/C EI 15-U/U, EI 15-C/U, EI 15-U/C, EI 15-C/C</b>
Diameter 20 mm, wall thickness 3 mm	50	<b>EI 240-C/U, EI 240-U/C, EI 240-C/C</b>
Diameter 25 mm, wall thickness 2.5 mm	55	<b>E 240-C/U, E 240-U/C, E 240-C/C EI 20-C/U, EI 20-U/C, EI 20-C/C</b>
Diameter 40 mm, wall thickness 4 mm	80	<b>EI 90-C/U, EI 90-U/C, EI 90-C/C</b>
Diameter 50 mm, wall thickness 4.5 mm	90	<b>EI 20-C/U, EI 20-U/C, EI 20-C/C</b>
Diameter 63 mm, wall thickness 6 mm	113	<b>E 30-C/U, E 30-U/C, E 30-C/C EI 20-C/U, EI 20-U/C, EI 20-C/C</b>
Diameter 90 mm, wall thickness 9 mm	150	<b>EI 20-C/U, EI 20-U/C, EI 20-C/C</b>

<sup>#</sup> Multilayer composite pipe – PE-RT/Al/PE-RT

### A.1.2 Penetration seal with metal pipe including continued interrupted (CI) or minimum 500 mm long local interrupted (LI) combustible insulation

**Penetration Seal:** Metal pipes with 30 mm Armaflex Class O or K-Flex ST continuous, interrupted or minimum 500 mm long local to both or just the top side of the floor, interrupted insulation (CI or LI), fitted centrally in the aperture with a single 10 mm deep Sealfire W150 seal to both sides of the floor backed to full depth with Stone wool insulation 90kg/m<sup>3</sup>.

Construction details:



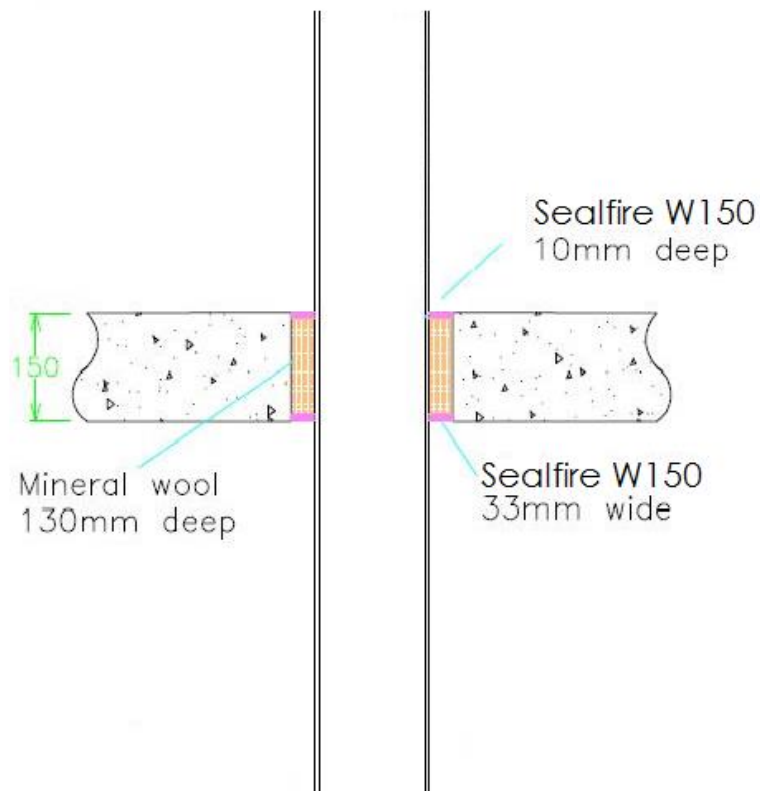
#### A.1.2.1

Services	Aperture diameter (mm)	Classification
<b>Steel pipe</b>		
Diameter 40 mm, wall thickness 2 – 14.2 mm	112	EI 240–C/U, EI 240–U/C, EI 240–C/C

### A.1.3 Sealfire W150 penetration seal with non-insulated metal pipes in rigid floors min. 150 mm thick

**Penetration Seal:** Metal pipes without insulation, fitted centrally in the aperture with a single 10 mm deep Sealfire W150 seal to both sides of the floor backed to full depth with Stone wool insulation 90kg/m<sup>3</sup>.

Construction details:



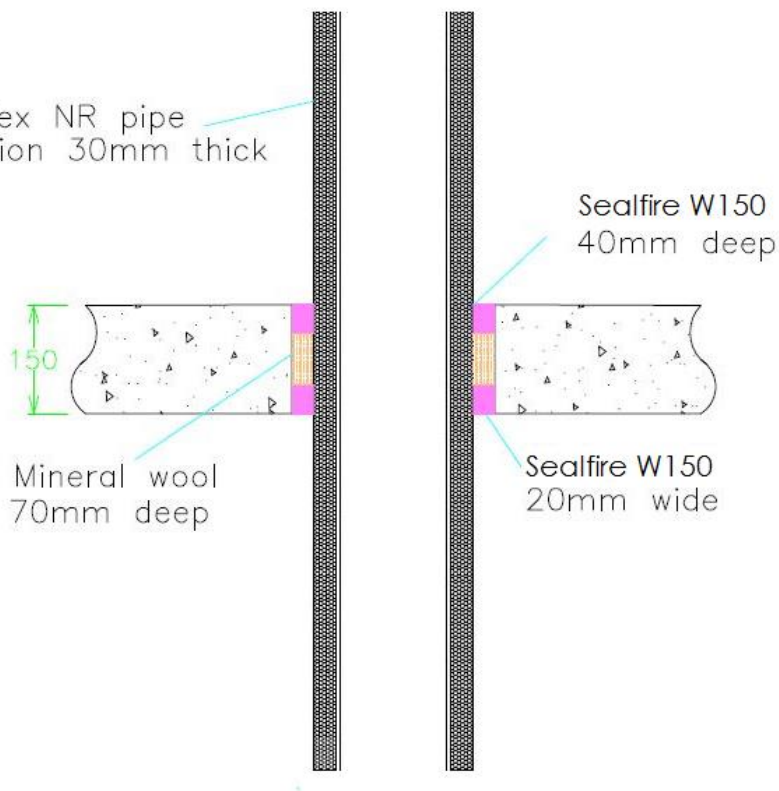
#### A.1.3.1

Services	Aperture diameter (mm)	Classification
Steel pipe		
Diameter 40 mm, wall thickness 2 – 14.2 mm	112	E 240-C/U, E 240-U/C, E 240-C/C EI 60-C/U, EI 60-U/C, EI 60-C/C

**A.1.4 Penetration seal with metal pipe including continued sustained (CS) combustible insulation**

**Penetration Seal:** Metal pipes with 30 mm Armaflex Class O or K-Flex ST continuous, sustained insulation (CS), fitted centrally in the aperture with a single 40 mm deep Sealfire W150 seal to both sides of the floor backed to full depth with Stone wool insulation 90kg/m<sup>3</sup>.

Construction details:

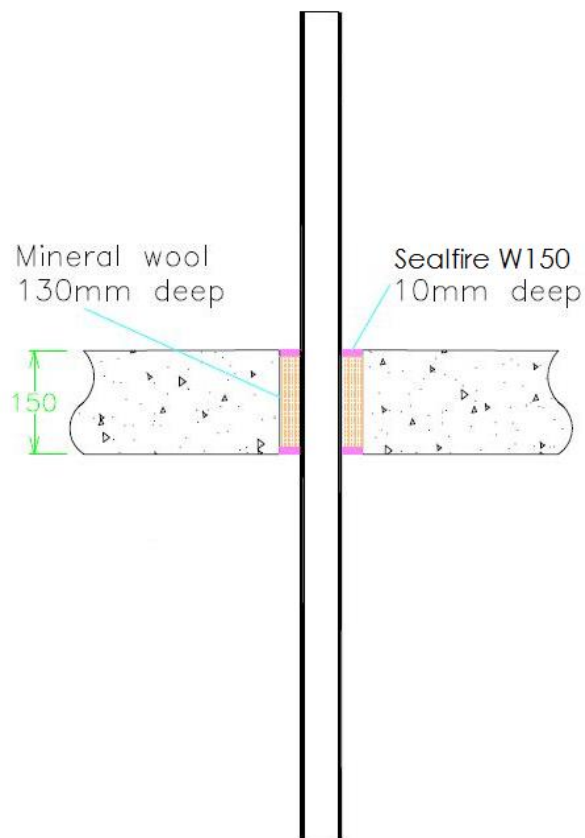
**A.1.4.1**

Services	Aperture diameter (mm)	Classification
<b>Steel pipe</b>		
Diameter 89 mm, wall thickness 4 – 14.2 mm	190	EI 60–C/U, EI 60–U/C, EI 60–C/C

### A.1.5 Penetration seal with cables

**Penetration Seal:** Electrical cables, fitted centrally in the aperture with a single 10 mm deep Sealfire W150 seal to both sides of the floor backed to full depth with Stone wool insulation 90kg/m<sup>3</sup>.

Construction details:



#### A.1.5.1

Services	Aperture diameter (mm)	Classification
Bundle of 4No. Type A3 + 1No. Type C3 cables	102	E 240, EI 90
1No. Type E cable	102	EI 240

Type A3 cable = 5 x 1.5 mm<sup>2</sup> core HD604.5 electrical cable with XLPE insulation, EVA sheath and 15 mm diameter

Type C3 cable = 4 x 95 mm<sup>2</sup> core HD604.5 electrical cable with XLPE insulation, EVA sheath and 42 mm diameter

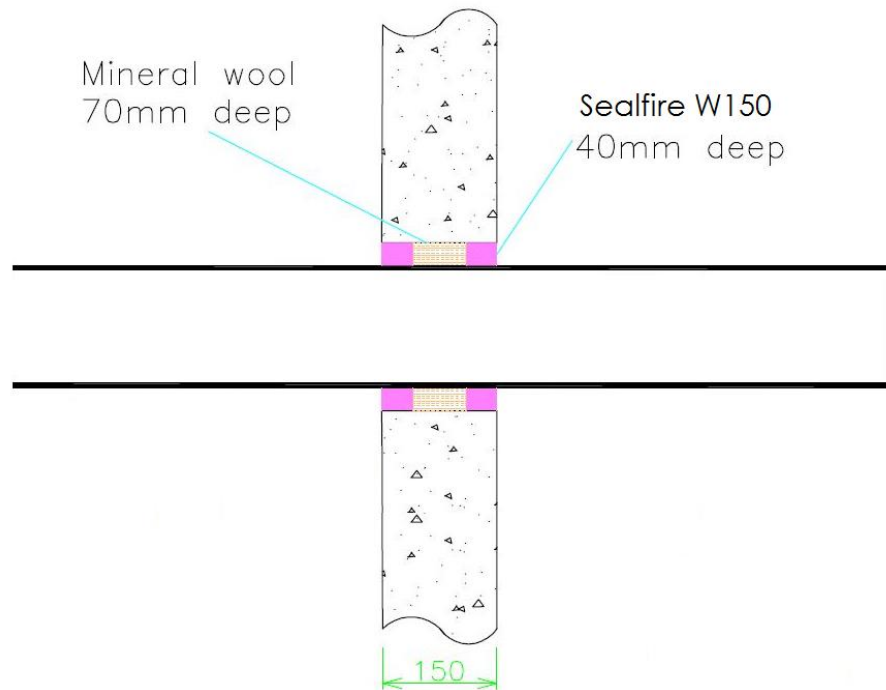
Type E cable = 1 x 185 mm<sup>2</sup> core HD603.3 electrical cable with PVC insulation, PVC sheath and 23-27 mm diameter

## B.2 Rigid wall constructions according to 1.2.1 with wall thickness of minimum 150 mm

### A.2.1 Penetration seal with plastic pipe

**Penetration Seal:** Combustible pipes fitted centrally with a single 40 mm deep Sealfire W150 to both sides of the wall backed to full depth with Stone wool insulation 90kg/m<sup>3</sup>.

Construction details:



**A.2.1.1**

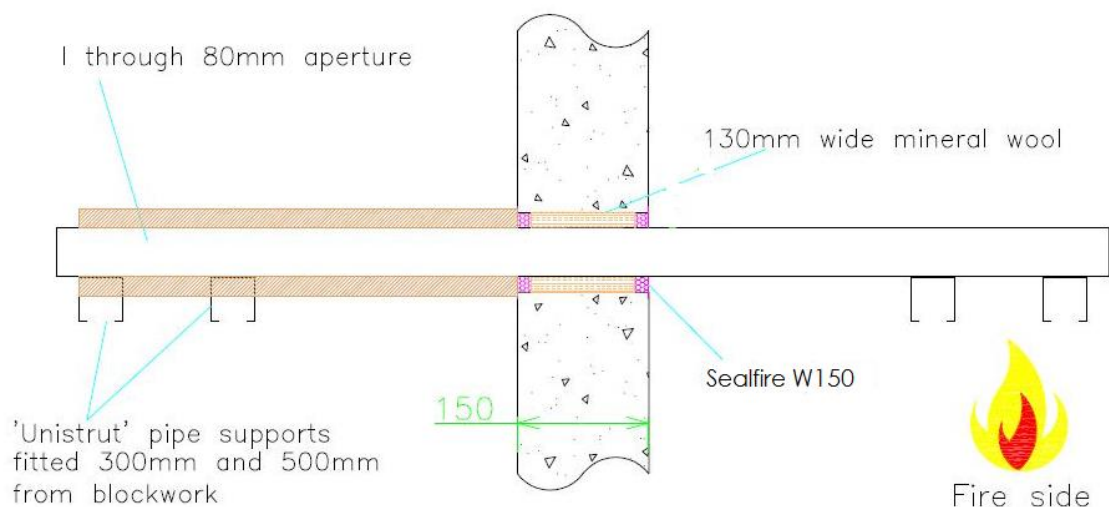
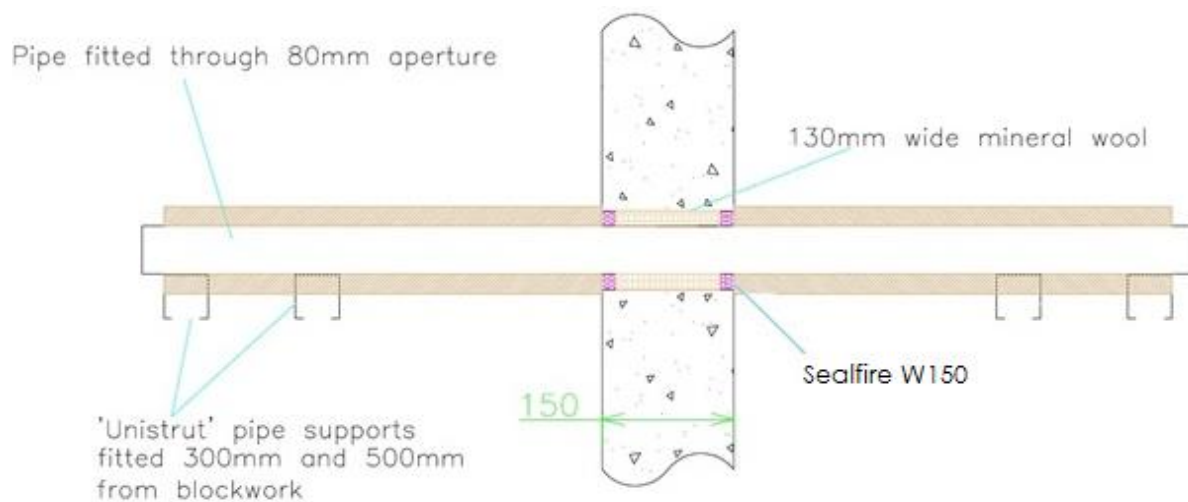
<b>Services</b>	<b>Aperture diameter (mm)</b>	<b>Classification</b>
PVC-U pipe according to EN 1329-1, EN 1452-1 and EN 1453-1*		
Diameter 20 mm, wall thickness 1.2 mm	35	EI 120-U/U, EI 120-C/U, EI 120-U/C, EI 120-C/C
Diameter 40 mm, wall thickness 3 mm	80	EI 240-C/U, EI 240-U/C, EI 240-C/C
Diameter 55 mm, wall thickness 2.2 mm	105	EI 180-C/U, EI 180-U/C, EI 180-C/C
Diameter 82 mm, wall thickness 2.5 mm	132	E 30-C/U, E 30-U/C, E 30-C/C EI 15-C/U, EI 15-U/C, EI 15-C/C
PE pipe according to EN 1519-1, EN 12201-2 and EN 12666-1, ABS pipe according to EN 1455-1 and SAN+PVC pipe according to EN 1565-1^		
Diameter 20 mm, wall thickness 2 mm	35	EI 120-U/U, EI 120-C/U, EI 120-U/C, EI 120-C/C
Diameter 40 mm, wall thickness 3 mm	80	EI 240-C/U, EI 240-U/C, EI 240-C/C
Diameter 55 mm, wall thickness 3.2 mm	105	EI 120-C/U, EI 120-U/C, EI 120-C/C
MLCP# pipe according to EN 21003-1 and EN 21003-2		
Diameter 16 mm, wall thickness 2.4 mm	36	EI 180-C/U, EI 180-U/C, EI 180-C/C
Diameter 20 mm, wall thickness 2.5mm	35	EI 120-U/U, EI 120-C/U, EI 120-U/C, EI 120-C/C
Diameter 20 mm, wall thickness 3 mm	50	EI 180-C/U, EI 180-U/C, EI 180-C/C
Diameter 25 mm, wall thickness 3 mm	55	E 180-C/U, E 180-U/C, E 180-C/C EI 90-C/U, EI 90-U/C, EI 90-C/C
Diameter 40 mm, wall thickness 4 mm	80	E 180-C/U, E 180-U/C, E 180-C/C EI 15-C/U, EI 15-U/C, EI 15-C/C
Diameter 50 mm, wall thickness 4.5 mm	90	E 60-C/U, E 60-U/C, E 60-C/C EI 15-C/U, EI 15-U/C, EI 15-C/C
Diameter 63 mm, wall thickness 6 mm	113	EI 60-C/U, EI 60-U/C, EI 60-C/C
Diameter 90 mm, wall thickness 9 mm	150	E 45-C/U, E 45-U/C, E 45-C/C EI 30-C/U, EI 30-U/C, EI 30-C/C

# Multilayer composite pipe – PE-RT/Al/PE-RT

### A.2.2 Penetration seal with metal pipe including continued interrupted (CI) or minimum 500 mm long local interrupted (LI) combustible insulation

**Penetration Seal:** Metal pipes with 25 mm Armaflex Class O or K-Flex ST insulation, fitted centrally in the aperture with a single 10 mm deep Sealfire W150 seal to both sides of the wall backed to full depth with Stone wool insulation 90kg/m<sup>3</sup>.

Construction details:



#### A.2.2.1

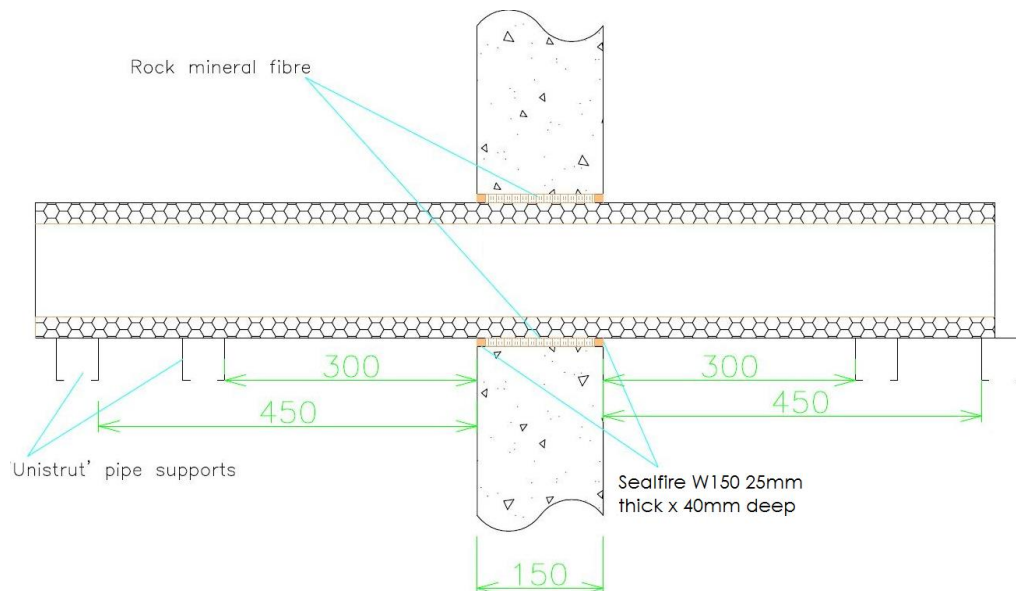
Services	Aperture diameter (mm)	Insulation length (mm)	Classification
Steel pipe			
Diameter 40 mm, wall thickness 3.2 – 14.2 mm	80	Continuous	E 240–C/U, E 240 U/C, E 240 C/C
		500 min.	EI 180 C/U, EI 180 U/C, EI 180 C/C
Copper pipe			
Diameter 35 mm, wall thickness 1.5 – 14.2 mm	80	Continuous	E 240–C/U, E 240 U/C, E 240 C/C EI 180 C/U, EI 180 U/C, EI 180 C/C
		500 min.	E 240–C/U, E 240 U/C, E 240 C/C EI 120 C/U, EI 120 U/C, EI 120 C/C



**A.2.3 Penetration seal with metal pipe including continued sustained (CS) combustible insulation**

**Penetration Seal:** Metal pipes with 25 mm Armaflex Class O or K-Flex ST insulation, fitted centrally in the aperture with a single 40 mm deep Sealfire W150 seal to both sides of the wall backed to full depth with Stone wool insulation 90kg/m<sup>3</sup>.

Construction details:

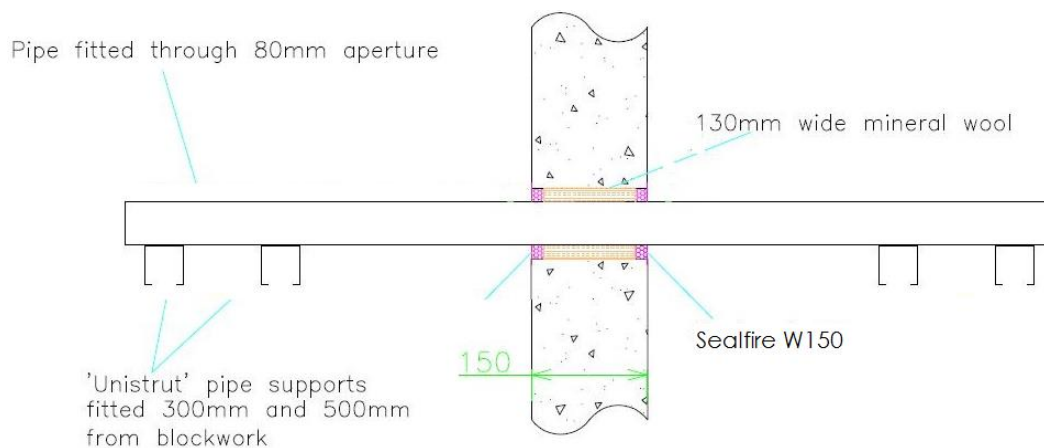
**A.2.3.1**

Services	Aperture diameter (mm)	Classification
<b>Steel pipe</b>		
Diameter 89 mm, wall thickness 4 -14.2 mm	190	E 120-C/U, E 120 U/C, E 120 C/C EI 60 C/U, EI 60 U/C, EI 60 C/C

#### A.2.4 Sealfire W150 penetration seal with non-insulated metal pipes in rigid walls min. 150 mm thick

**Penetration Seal:** Metal pipes without insulation, fitted centrally in the aperture with a single 10 mm deep Sealfire W150 seal to both sides of the wall backed to full depth with Stone wool insulation 90kg/m<sup>3</sup>.

Construction details:

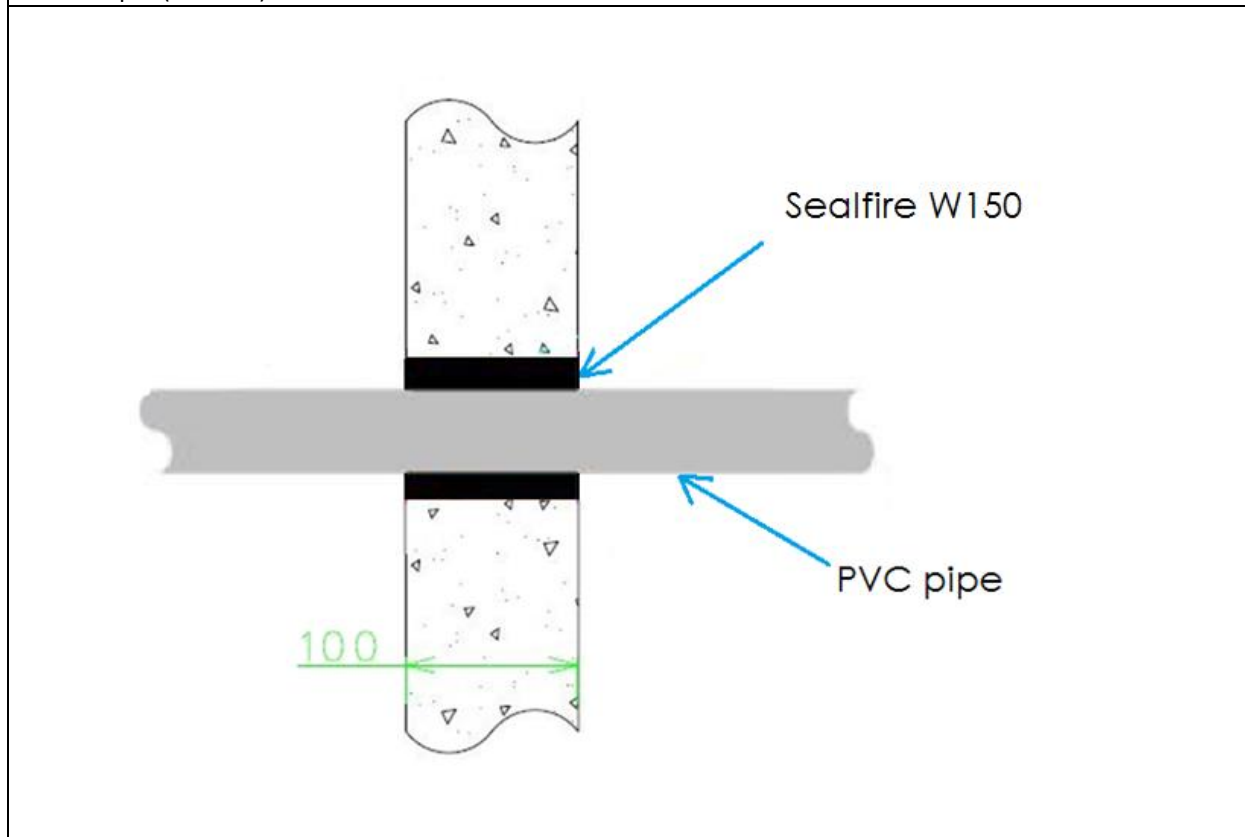


##### A.2.4.1

Services	Aperture diameter (mm)	Classification
Steel pipe		
Diameter 40 mm, wall thickness 3.2 – 14.2 mm	80	E 180–C/U, E 180 U/C, E 180 C/C EI 20 C/U, EI 20 U/C, EI 20 C/C
Copper pipe		
Diameter 35 mm, wall thickness 1.5 – 14.2 mm	80	E 240–C/U, E 240 U/C, E 240 C/C EI 30 C/U, EI 30 U/C, EI 30 C/C

### A.2.5 Penetration seal with plastic pipe

**Penetration Seal:** Combustible pipes fitted centrally with 100 mm deep Sealfire W150 applied around the pipe to full depth (100 mm) of the wall.



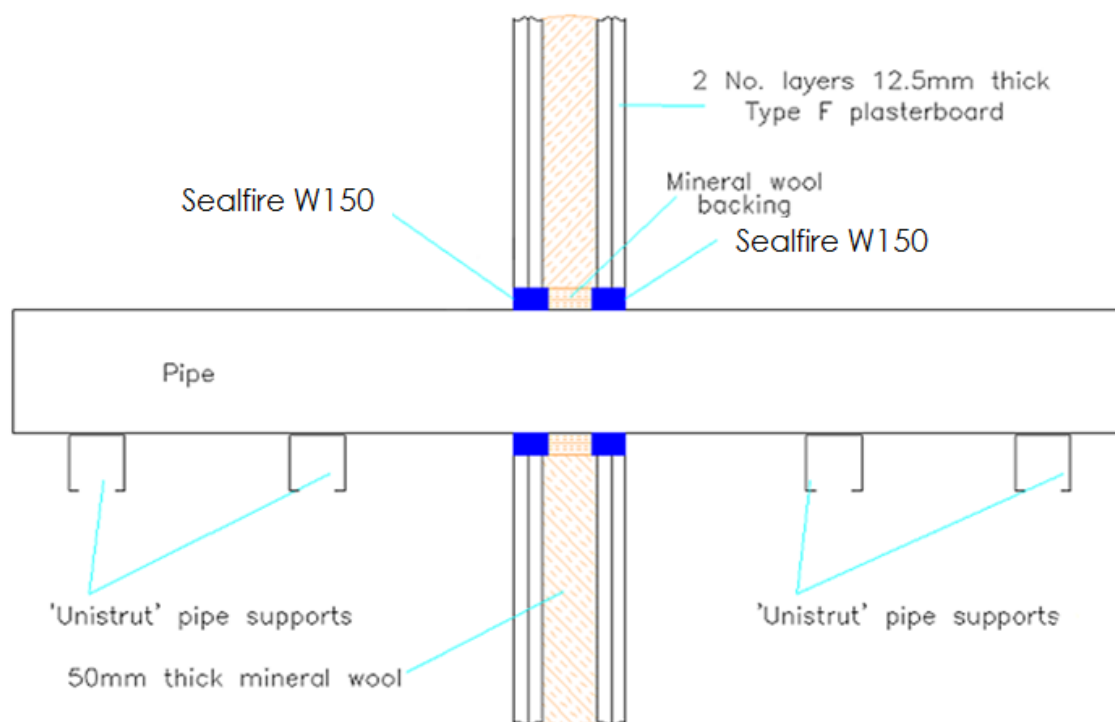
#### A.2.5.1

Services	Aperture diameter (mm)	Seal width (mm)	Classification
PVC-U pipe according to EN 1329-1, EN 1452-2 and EN 1453-1			
Diameter 55 mm, wall thickness 3.2mm	85	15	EI 90-U/C, EI 90-C/C
Diameter 160 mm, wall thickness 4mm	200	20	E 90-U/C, E 90-C/C EI 60-U/C, EI 60-C/C

**B.3 Flexible or rigid wall constructions according to 1.2.1 with wall thickness of minimum 100 mm****A.3.1 Penetration seal with plastic pipe**

**Penetration Seal:** Combustible pipes fitted centrally with a single 30 mm deep Sealfire W150 to both sides of the wall backed to full depth with mineral wool insulation 33kg/m<sup>3</sup>.

Construction details:

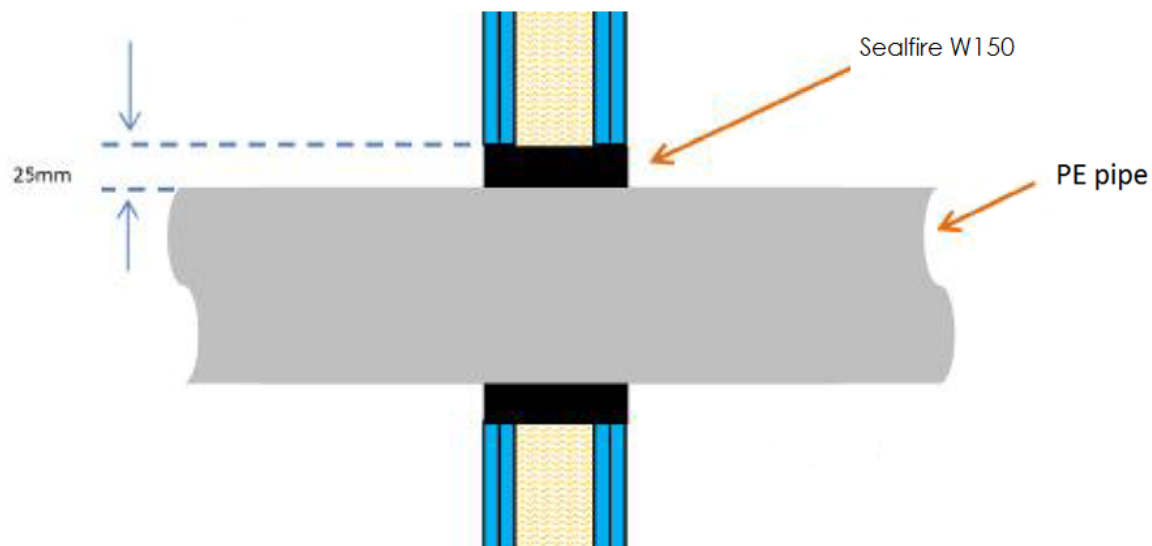
**A.3.1.1**

Services	Aperture diameter (mm)	Seal width (mm)	Classification
PVC-U pipe according to EN 1329-1, EN 1452-2 and EN 1453-1			
Diameter 20 mm, wall thickness 1.0mm	32	6	EI 120-U/U, EI 120-C/U, EI 120-U/C, EI 120-C/C
Diameter 40 mm, wall thickness 1.9-3.0mm	60	10	EI 120-U/U, EI 120-C/U, EI 120-U/C, EI 120-C/C
Diameter 110 mm, wall thickness 1.8	150	20	E 120-U/U, E 120-C/U, E 120-U/C, E 120-C/C EI 90-U/U, EI 90-C/U, EI 90-U/C, EI 90-C/C
PE pipe according to EN 1519-1, EN 12201-2 and EN 12666-1, ABS pipe according to EN 1455-1 and SAN+PVC pipe according to EN 1565-1			
Diameter 32 mm, wall thickness 2 mm	52	10	EI 120-U/U, EI 120-C/U, EI 120-U/C, EI 120-C/C
Diameter 40 mm, wall thickness 2.4-3.7 mm	60	10	EI 120-U/U, EI 120-C/U, EI 120-U/C, EI 120-C/C
Diameter 75 mm, wall thickness 4.5 mm	105	15	EI 120-U/U, EI 120-C/U, EI 120-U/C, EI 120-C/C
Diameter 75 mm, wall thickness 4.5-6.8 mm	105	15	EI 60-U/U, EI 60-C/U, EI 60-U/C, EI 60-C/C
PP pipe according to EN 1451-1			
Diameter 50 mm, wall thickness 4.6mm	80	15	EI 120-U/U, EI 120-C/U, EI 120-U/C, EI 120-C/C

### A.3.2 Penetration seal with plastic pipe

**Penetration Seal:** Combustible pipes fitted centrally with 100 mm deep Sealfire W150 applied around the pipe to full depth (100 mm) of the wall

Construction details:



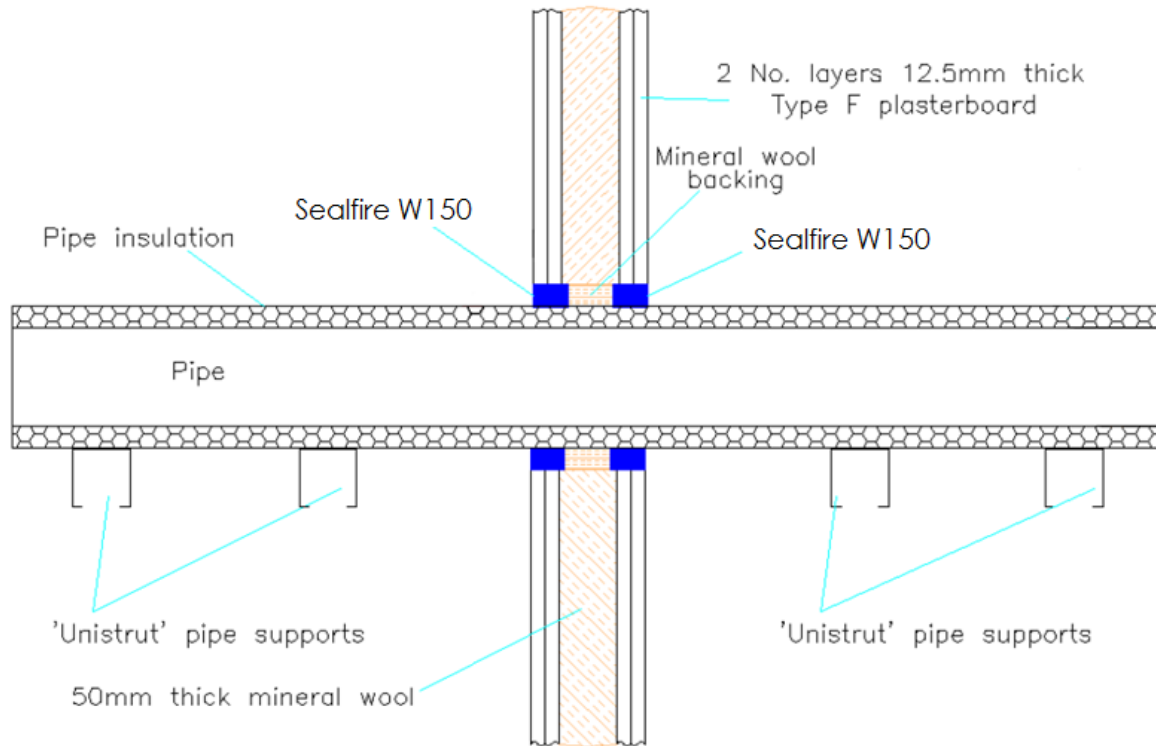
#### A.3.2.1

Services	Aperture diameter (mm)	Seal width (mm)	Classification
PE pipe according to EN 1519-1, EN 12201-2 and EN 12666-1, ABS pipe according to EN 1455-1 and SAN+PVC pipe according to EN 1565-1			
Diameter 160 mm, wall thickness 10.2 mm	210	25	EI 90-U/C, EI 90-C/C
Diameter 110 mm, wall thickness 8.2 mm	160	25	EI 90-U/C, EI 90-C/C

**A.3.3 Penetration seal with metal pipe including continued sustained (CS) combustible insulation**

**Penetration Seal:** Metal pipes with K-Flex ST or Armaflex Class O continuous, sustained insulation (CS), fitted centrally in the aperture with a single 30 mm deep Sealfire W150 to both sides of the wall backed to full depth with mineral wool insulation 33kg/m<sup>3</sup>.

Construction details:

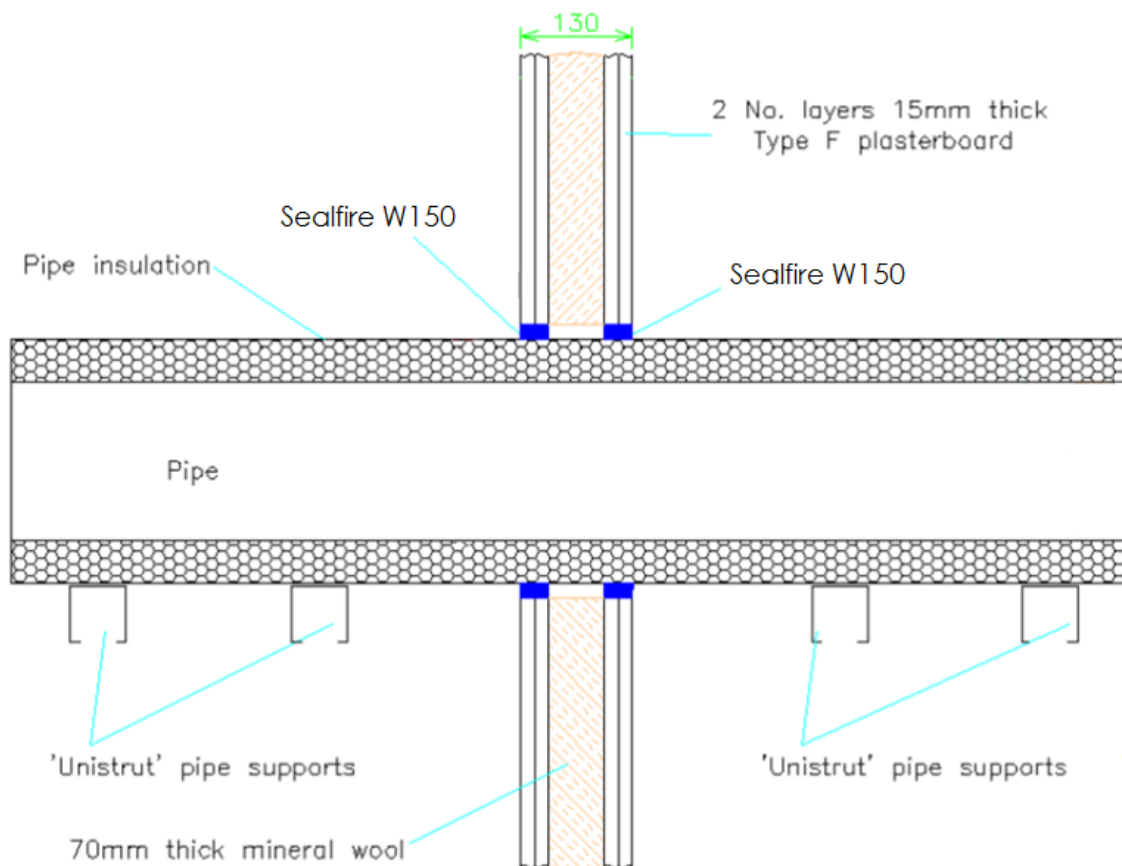
**A.3.3.1**

Services	Aperture diameter (mm)	Seal width (mm)	Pipe insulation thickness (mm)	Classification
Steel pipe				
Diameter 115 mm, wall thickness 2.0mm	173	10	19	E 120-C/U, E 120-U/C, E 120-C/C EI 90-C/U, EI 90-U/C, EI 90-C/C
Diameter 115 mm, wall thickness 2.0mm	173-209	10-15	19-32	E 120-C/U, E 120-U/C, E 120-C/C EI 90-C/U, EI 90-U/C, EI 90-C/C
Diameter 89 mm, wall thickness 1.5	135	10	13	E 120-C/U, E 120-U/C, E 120-C/C EI 90-C/U, EI 90-U/C, EI 90-C/C
Diameter 89 mm, wall thickness 1.5	135-169	10-15	13-25	E 120-C/U, E 120-U/C, E 120-C/C EI 90-C/U, EI 90-U/C, EI 90-C/C

**B.4 Flexible wall constructions according to 1.2.1 with wall thickness of minimum 130 mm****A.4.1 Penetration seal with metal pipe including continued sustained (CS) combustible insulation**

**Penetration Seal:** Metal pipes with K-Flex ST or Armaflex Class O continuous, sustained insulation (CS), fitted centrally in the aperture with a single 30 mm deep Sealfire W150 to both sides of the wall backed to full depth with mineral wool insulation 33kg/m<sup>3</sup>.

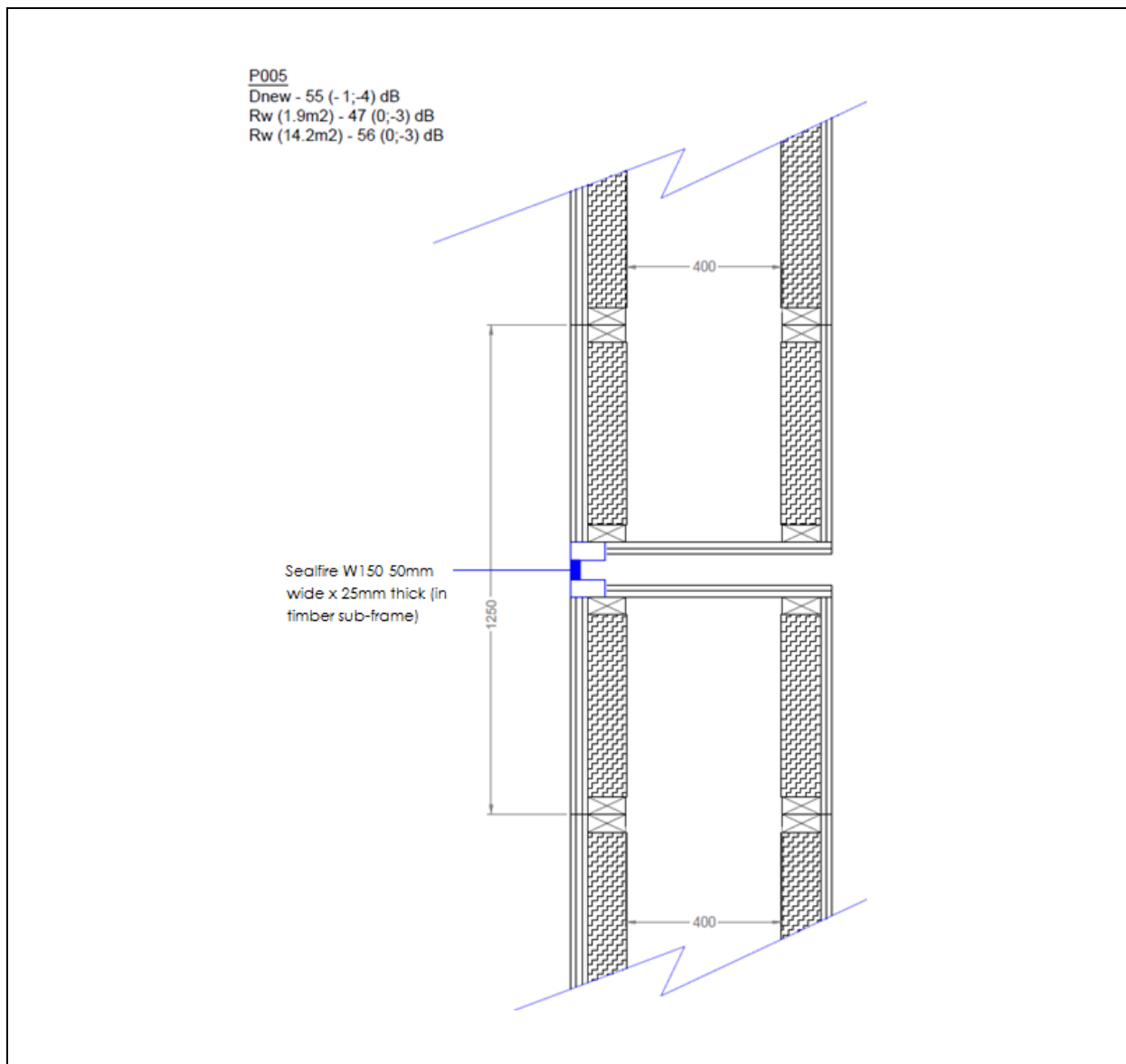
Construction details:

**A.4.1.1**

Services	Aperture diameter (mm)	Seal width (mm)	Pipe insulation thickness (mm)	Classification
Steel pipe				
Diameter 219 mm, wall thickness 7.0mm	339	20	40	EI 120-C/U, EI 120-U/C, EI 120-C/C

## ANNEX B – Airborne Sound Insulation Classification – Sealfire W150

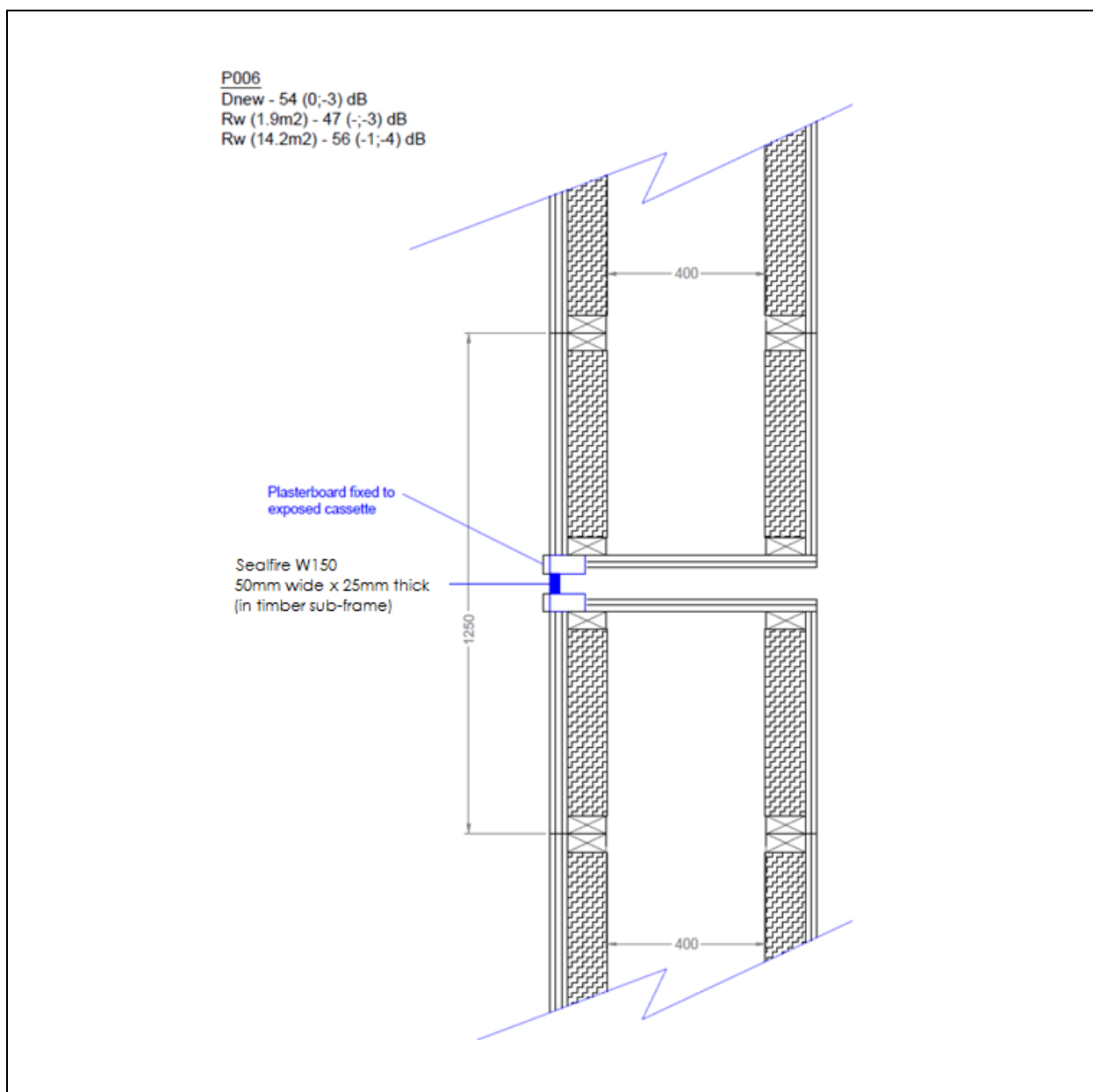
### B.5 Sealfire W150, 50mm wide x 25mm thick (no backing material), in the following configuration



BWR 5 Protection against noise		
Basic requirement for construction work	Basic Requirement	Performance
EN 10140-2/ EN ISO 717-1	Airborne sound insulation	Rw(C;Ctr)= 56 (0;-3) dB

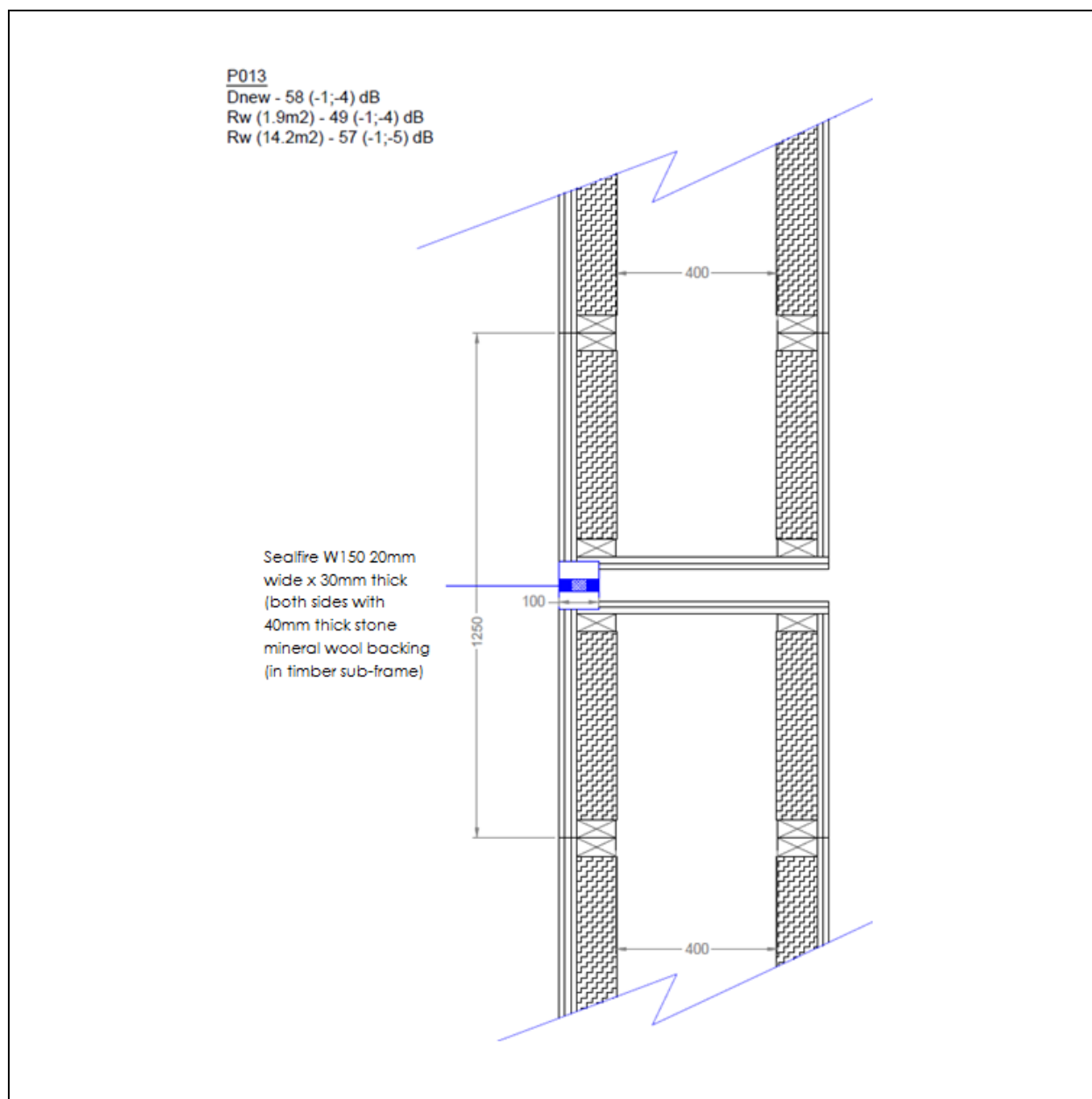


**B.6 Sealfire W150, 50mm wide x 25mm thick (no backing material). Plaster board fixed to exposed cassette, in the following configuration**



BWR 5 Protection against noise		
Basic requirement for construction work	Basic Requirement	Performance
EN 10140-2/ EN ISO 717-1	Airborne sound insulation	Rw(C;Ctr)= 56 (-1;-4) dB

**B.7 Sealfire W150, 20mm wide x 30mm thick sealant (both sides) with 40mm stone mineral wool backing, in the following configuration**



BWR 5 Protection against noise		
Basic requirement for construction work	Basic Requirement	Performance
EN 10140-2/ EN ISO 717-1	Airborne sound insulation	Rw(C;Ctr)= 57 (-1;-5) dB